



OAKFIELD



Barbuda Quay, Eastbourne BN23 5TT

Offers Over £240,000



Barbuda Quay, Eastbourne BN23 5TT

Investors only! Stunning Two bedroom second floor apartment situated in the popular South Harbour with tenants in situ.

Accommodation comprises, entrance hallway benefiting from built in storage cupboards, living room with balcony overlooking the harbour mouth, two good size bedrooms, the main bedroom benefits from a en-suite shower room, a modern kitchen, and a family bathroom comprising low level w.c, basin and bath.

The apartment benefits from a allocated parking space, entry phone system, and gas central heating.

The current tenants pay £1,200.00 per month with this due to be increased in January to give the property a better yield.





Kitchen

11'2" x 9'8" (3.42 x 2.95)

Lounge

16'9" x 11'2" (5.13 x 3.42)

Bedroom One

15'8" x 9'7" (4.80 x 2.93)

Bedroom Two

13'0" x 11'5" (3.98 x 3.48)

Bathroom

7'1" x 5'7" (2.18 x 1.72)

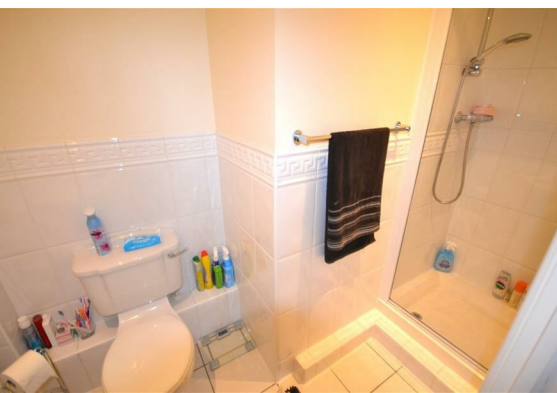
Ensuite

9'1" x 4'7" (2.79 x 1.42)

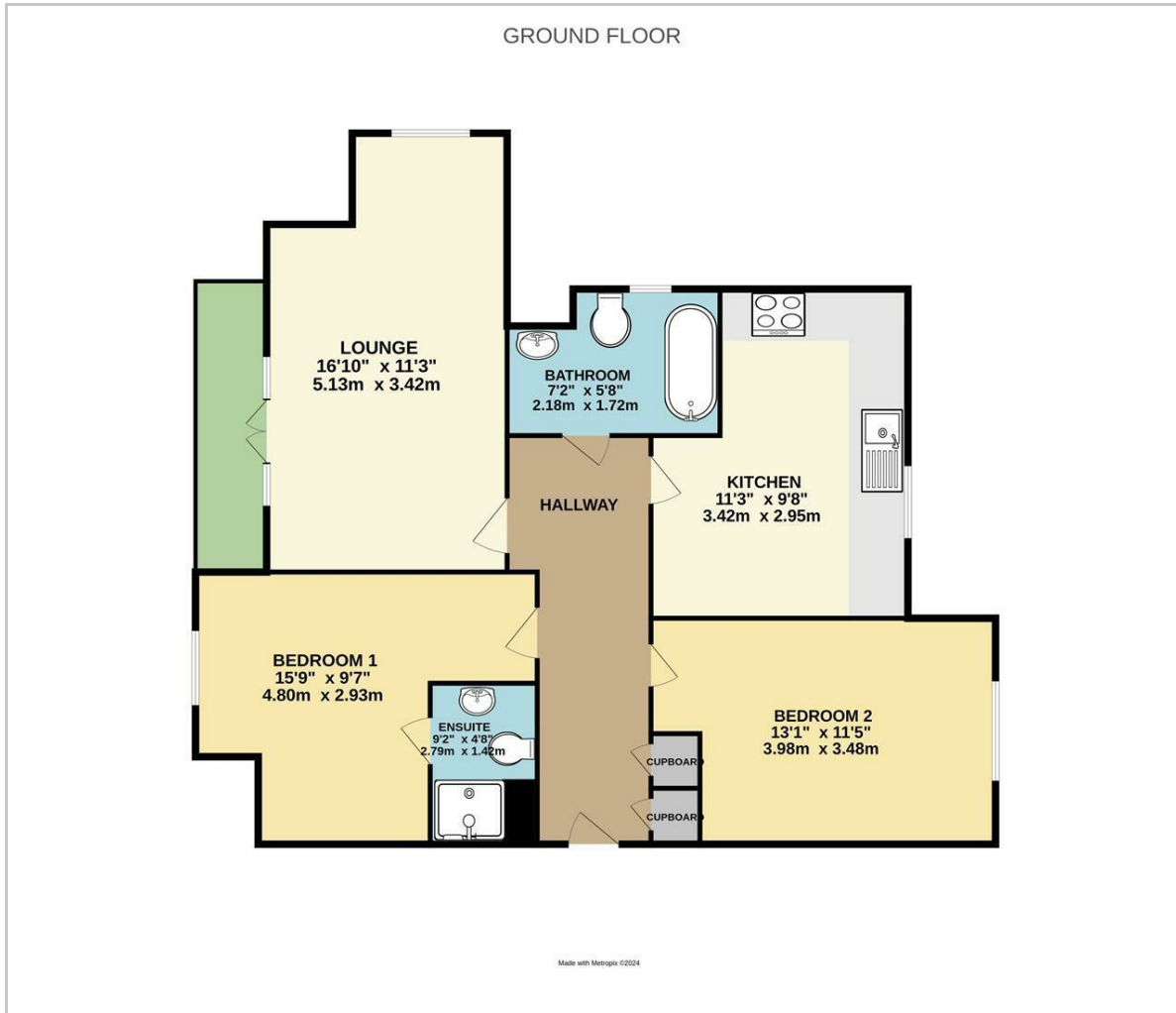
Council Tax Band D

Lease Information

The seller advises that the property is offered as leasehold and has approximately 99 years remaining on the lease. The service charge is approximately £1350 per annum. The agent has not had sight of confirmation documents and therefore the buyer is advised to obtain verification from their solicitors or surveyor.



Floor Plan



Viewing

Please contact us on 01323 723 500 if you wish to arrange a viewing appointment for this property or require further information.

These particulars, whilst believed to be accurate are set out as a general outline only for guidance and do not constitute any part of an offer or contract. Intending purchasers should not rely on them as statements of representation of fact, but must satisfy themselves by inspection or otherwise as to their accuracy. No person in this firm's employment has the authority to make or give any representation or warranty in respect of the property.

Area Map



Energy Efficiency Graph

