



OAKFIELD



Sydney Road, Eastbourne BN22 8BQ

Asking Price £250,000



## Sydney Road, Eastbourne BN22 8BQ

Welcome to this charming house located on Sydney Road in the picturesque town of Eastbourne.

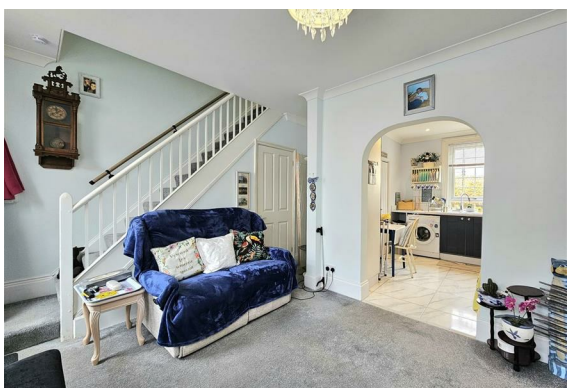
This property is in lovely condition, meticulously maintained and ready for you to move in without any additional work needed.

Situated close to the town, you'll have easy access to all the amenities and conveniences that Eastbourne has to offer.

Despite its proximity to the town, this house is nestled in a quiet location, providing you with a peaceful retreat to call home.

The house benefits from a bright and airy living room, modern kitchen with utility room and a downstairs WC.

The courtyard rear garden has been well kept and has side access. Upstairs you'll find two well sized bedroom and a newly finished family bathroom.





**Livingroom**

14'7" x 10'5" (4.45 x 3.20)

**Kitchen**

13'3" x 10'5" (4.05 x 3.18)

**Bedroom one**

11'10" x 10'7" (3.63 x 3.23)

**Bedroom two**

10'5" x 7'6" (3.20 x 2.31)

**Council Tax B - £1879**



## Floor Plan



## Viewing

Please contact us on 01323 723 500 if you wish to arrange a viewing appointment for this property or require further information.

These particulars, whilst believed to be accurate are set out as a general outline only for guidance and do not constitute any part of an offer or contract. Intending purchasers should not rely on them as statements of representation of fact, but must satisfy themselves by inspection or otherwise as to their accuracy. No person in this firm's employment has the authority to make or give any representation or warranty in respect of the property.

## Area Map



## Energy Efficiency Graph

