

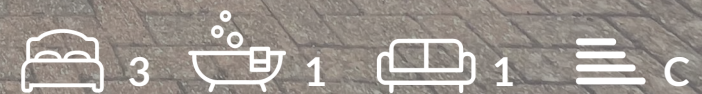


OAKFIELD



Lavant Road, Stone Cross, Pevensey, BN24 5EZ

£1,575 Per Calendar Month



Lavant Road, Stone Cross, Pevensey, BN24 5EZ

An ideal family home located in the ever popular Stone Cross!

This three bedroom semi-detached house makes a comfortable home and hold a number of attractive features.

The property comprises of a nicely sized living space, kitchen diner with access to rear garden, two double bedrooms with built in storage, a smaller third bedroom and a modernised family bathroom.

Further benefits include off street parking and a garage.

Please note:
An annual household income of £46,500 is required to pass the affordability requirements.
The tenancy will begin with a 12 month initial term





Living Room

11'9" x 11'1" (3.6 x 3.4)

WC

3'8" x 3'8" (1.14 x 1.13)

Kitchen/Dining Room

14'5" x 9'10" (4.4 x 3.0)

Bedroom One

12'1" x 7'10" (3.7 x 2.4)

Bedroom Two

8'10" x 8'2" (2.7 x 2.5)

Bathroom

5'10" x 5'2" (1.8 x 1.6)

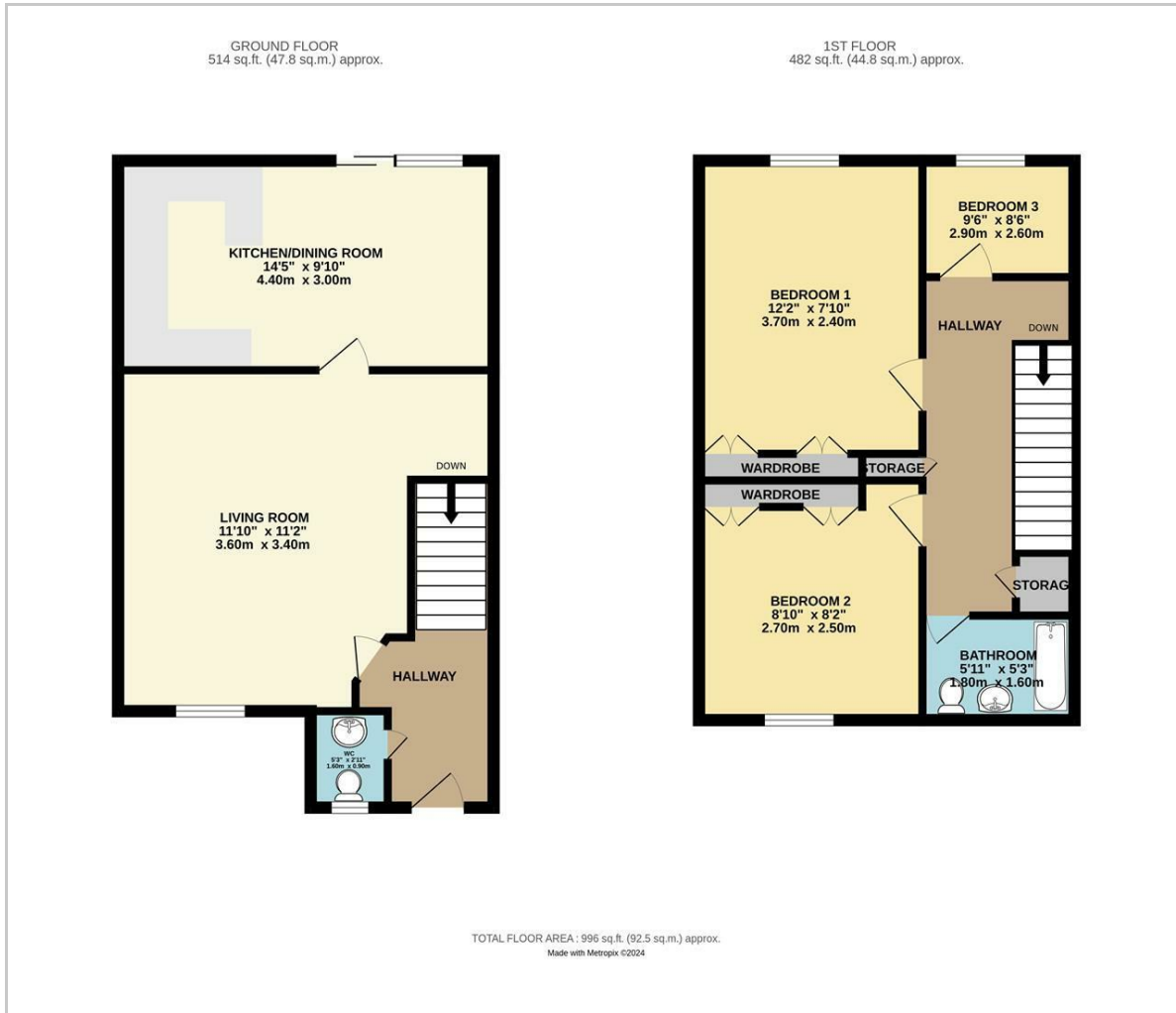
Bedroom Three

9'6" x 8'6" (2.9 x 2.6)

Council Tax Band D - £2,464.49 per anum



Floor Plan

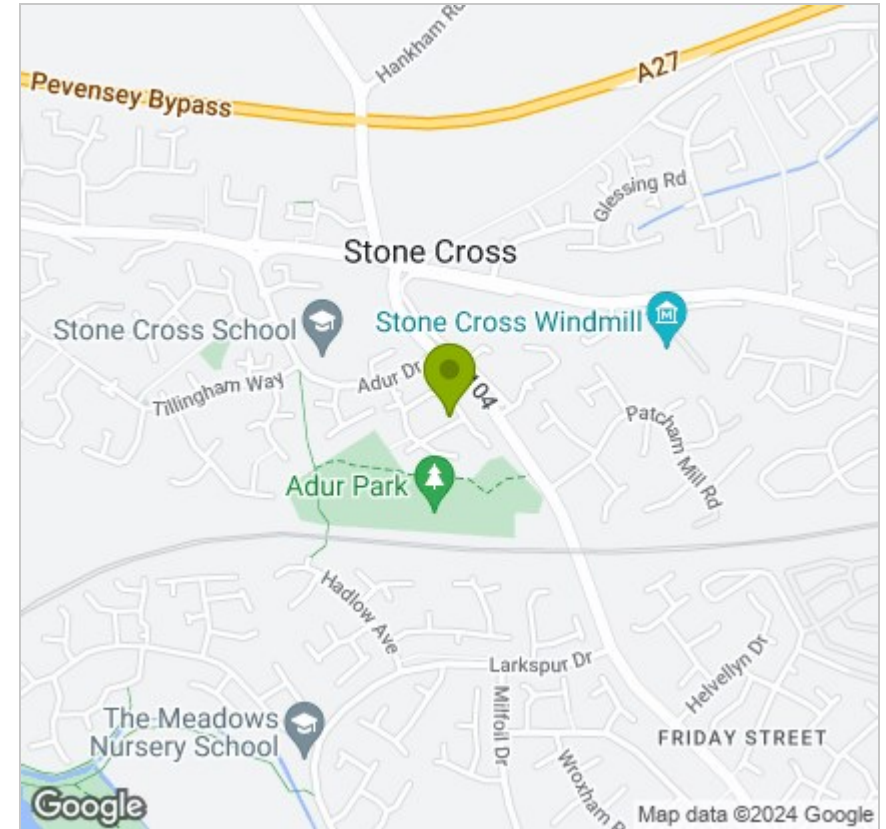


Viewing

Please contact us on 01323 405553 if you wish to arrange a viewing appointment for this property or require further information.

These particulars, whilst believed to be accurate are set out as a general outline only for guidance and do not constitute any part of an offer or contract. Intending purchasers should not rely on them as statements of representation of fact, but must satisfy themselves by inspection or otherwise as to their accuracy. No person in this firm's employment has the authority to make or give any representation or warranty in respect of the property.

Area Map



Energy Efficiency Graph

