



OAKFIELD



Collingwood Close, Eastbourne
Asking Price £180,000



Collingwood Close, Eastbourne

This cosy one-bedroom ground floor flat nestled in Langley Point, Eastbourne, is one not to be missed.

As you step into the property you enter into the large hallway. you're then greeted by a spacious living room full of natural light streaming through the large double doors that open up to the tranquil communal gardens.

The living room is next to the well-appointed kitchen, offering a perfect space for anyone that likes to cook.

Retreat to the large bedroom, boasting comfort and tranquillity, ideal for restful night. The large windows frame picturesque views of the surrounding greenery.

Completing this delightful package is the convenience of a garage, providing secure parking and additional storage space.

This ground floor flat offers the perfect blend of comfort, convenience, and community living in the heart of Langley Point.





Living Room

11'6 x 9'2 (3.51m x 2.79m)

Kitchen

7'11 x 7'5 (2.41m x 2.26m)

Bedroom

16'8 x 10'9 (5.08m x 3.28m)

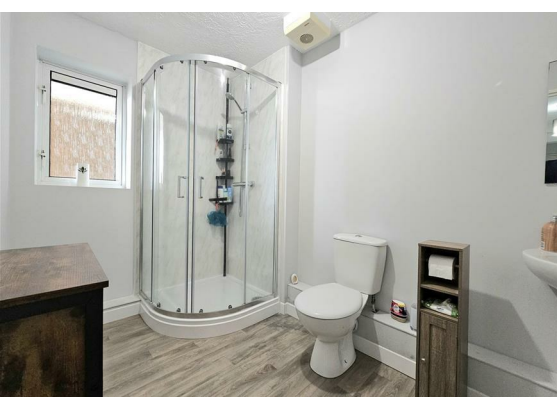
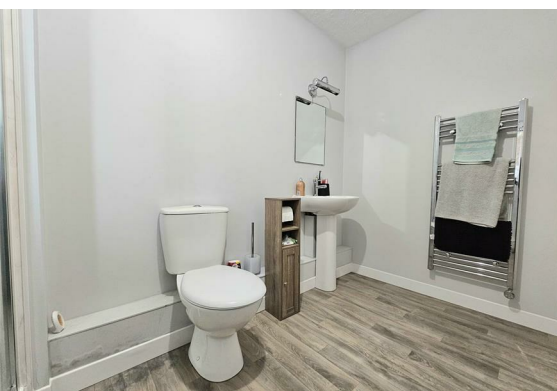
Shower Room

10'6 x 6'0 (3.20m x 1.83m)

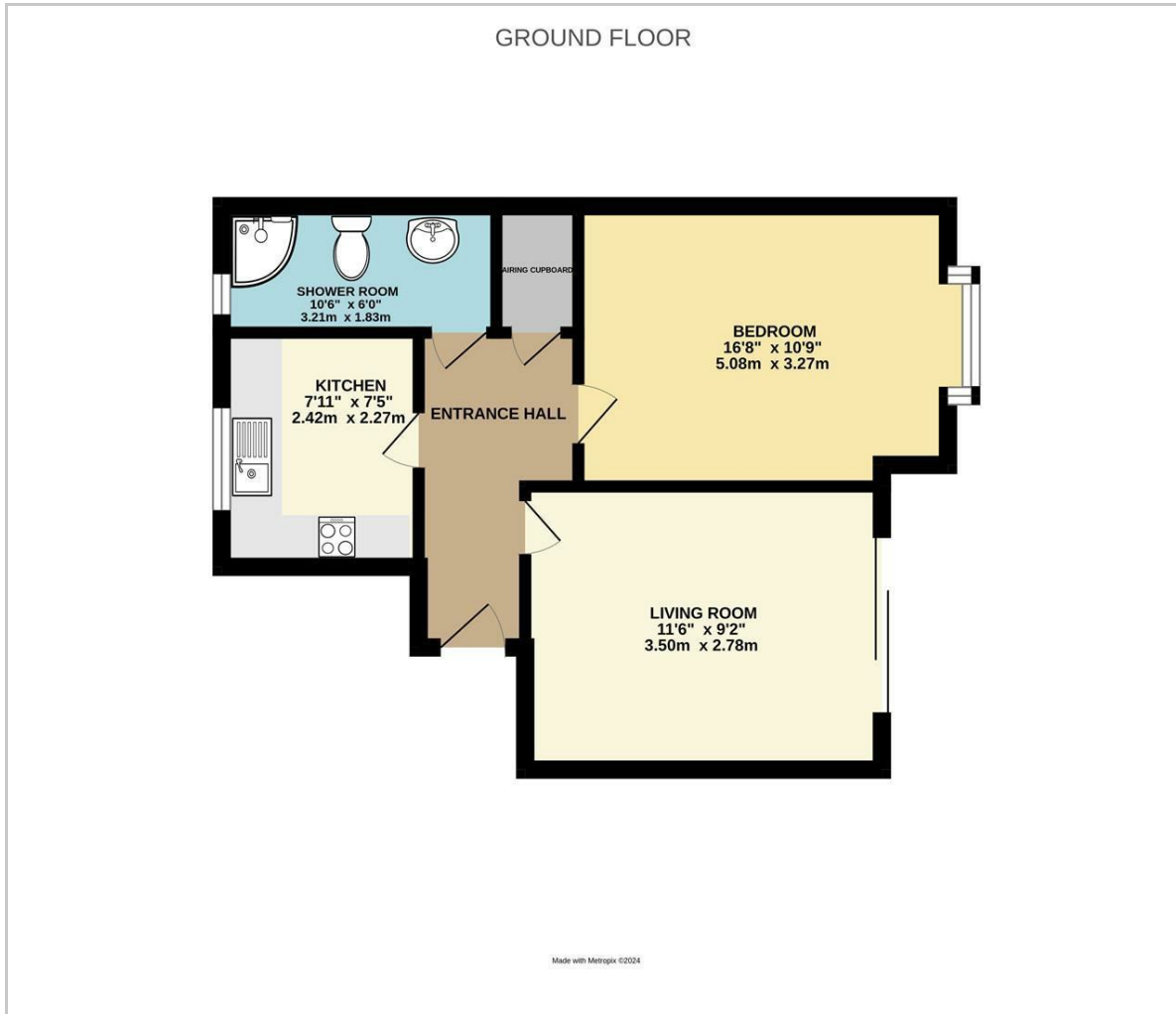
Council Tax Band - B £1879

Lease Information

The seller advises that the property is offered as share of freehold and had approximately 900 years remaining on the lease. The service charge is approximately £756.12 every six months. The agent has not had sight of confirmation documents and therefore the buyer is advised to obtain verification from their solicitors or surveyor.



Floor Plan



Viewing

Please contact us on 01323 723 500 if you wish to arrange a viewing appointment for this property or require further information.

These particulars, whilst believed to be accurate are set out as a general outline only for guidance and do not constitute any part of an offer or contract. Intending purchasers should not rely on them as statements of representation of fact, but must satisfy themselves by inspection or otherwise as to their accuracy. No person in this firm's employment has the authority to make or give any representation or warranty in respect of the property.

Area Map



Energy Efficiency Graph

