



OAKFIELD



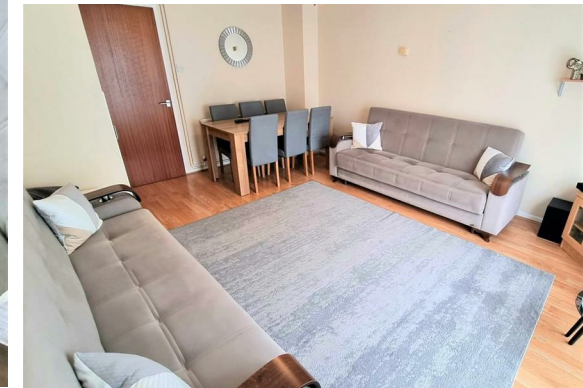
Springfield Road, Eastbourne
Asking Price £230,000



Springfield Road, Eastbourne

This charming three bedroom terrace house in seaside, Eastbourne is the perfect place for anyone looking for a comfortable and convenient living space. The house features a spacious living room with plenty of natural light. The kitchen is fully equipped with modern appliances. The bedrooms are cosy and comfortable with a family bathroom in-between. The property also benefits from a garage close by.

The location of this house is unbeatable, situated close to the town centre and the beach. You'll have easy access to all the shops, restaurants, and entertainment options that Eastbourne has to offer. You are also a stones throw from the seafront with its picturesque walk and cycle path so you can enjoy the beautiful coastline whenever you like.





Living Room

16'3" x 12'8" (4.96 x 3.87)

Kitchen

9'5" x 6'7" (2.88 x 2.02)

Bedroom One

12'8" 8'9" (3.87 2.68)

Bedroom Two

12'1" x 6'7" (3.69 x 2.02)

Bedroom Three

6'8" x 6'8" (2.05 x 2.05)

Bathroom

6'7" x 6'3" (2.02 x 1.93)

Council Tax Band - B



Floor Plan



Viewing

Please contact us on 01323 723 500 if you wish to arrange a viewing appointment for this property or require further information.

These particulars, whilst believed to be accurate are set out as a general outline only for guidance and do not constitute any part of an offer or contract. Intending purchasers should not rely on them as statements of representation of fact, but must satisfy themselves by inspection or otherwise as to their accuracy. No person in this firm's employment has the authority to make or give any representation or warranty in respect of the property.

Area Map



Energy Efficiency Graph

