



OAKFIELD



Foxglove Road, Eastbourne
£1,250 Per Calendar Month



Foxglove Road, Eastbourne

Located in the Langney, this three bedroom property would make a great family home, being set in a great school catchment area.

Comprising of a large living space opening through to the kitchen and giving access to the rear patio garden, three double bedrooms and family bathroom.

Parking is available free on street

Please Note:
The tenancy will begin with a 12 month initial term
An annual household income of £37,500 is required to pass the affordability requirements.





Entrance Hall

12'5" x 11'5" (3.8 x 3.5)

Living Room/Dining Area

20'0" x 14'5" (6.1 x 4.4)

Kitchen

8'10" x 8'10" (2.7 x 2.7)

Bedroom One

14'1" x 9'6" (4.3 x 2.9)

Bedroom Two

11'5" x 9'10" (3.5 x 3.0)

Bedroom Three

9'6" x 8'10" (2.9 x 2.7)

Bathroom

6'6" x 5'6" (2.0 x 1.7)

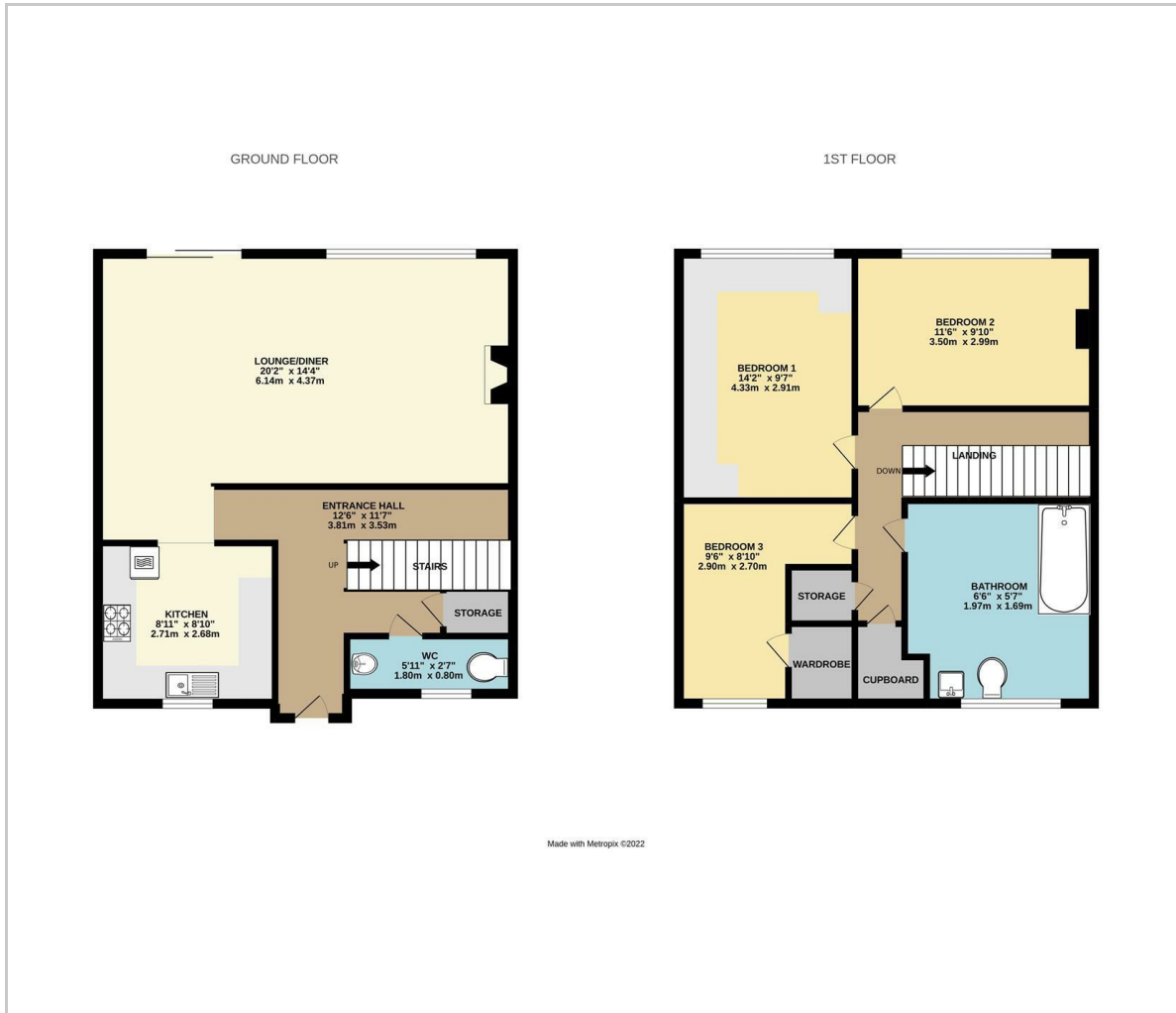
W.C.

5'10" x 2'7" (1.8 x 0.8)

Council Tax Band B - £1794.93 Per Year



Floor Plan

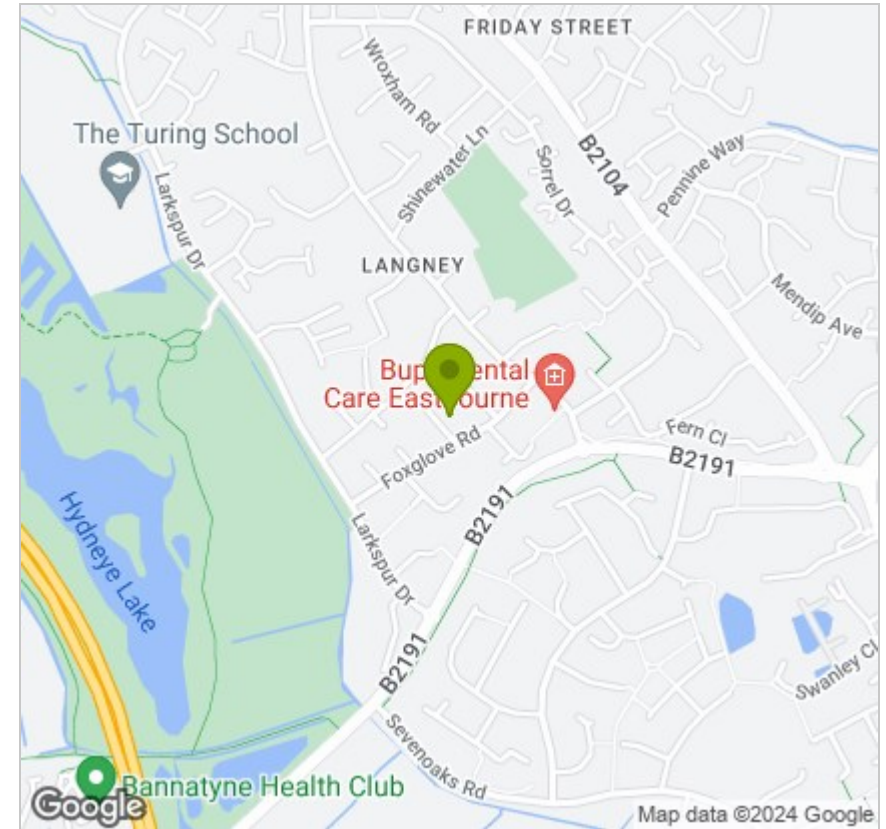


Viewing

Please contact us on 01323 405553 if you wish to arrange a viewing appointment for this property or require further information.

These particulars, whilst believed to be accurate are set out as a general outline only for guidance and do not constitute any part of an offer or contract. Intending purchasers should not rely on them as statements of representation of fact, but must satisfy themselves by inspection or otherwise as to their accuracy. No person in this firm's employment has the authority to make or give any representation or warranty in respect of the property.

Area Map



Energy Efficiency Graph

