



OAKFIELD



Pevensey Bay Road, Eastbourne BN23 6HX

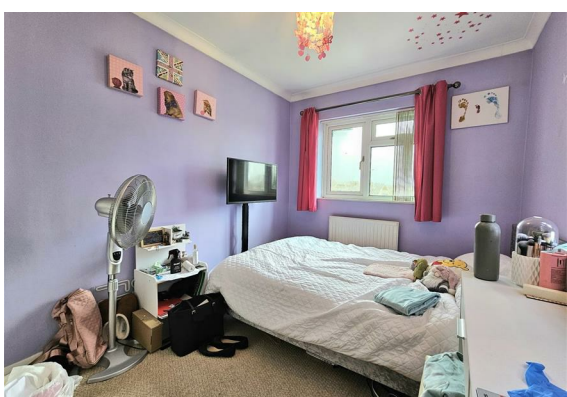
Asking Price £235,000



Pevensey Bay Road, Eastbourne BN23 6HX

This charming two bedroom terrace house in Eastbourne is the perfect place for anyone looking for a comfortable and convenient living space. The house features a spacious living room with plenty of natural light. The kitchen is fully equipped with modern appliances. The bedrooms are both comfortable doubles with a bathroom in-between.

The location of this house is unbeatable, situated close to Eastbourne harbour and the beach. You'll have easy access to all the shops, restaurants, and entertainment options that Eastbourne has to offer. You are also a stones throw from the seafront with its picturesque walk and cycle path so you can enjoy the beautiful coastline whenever you like.





Living Room

15'0 x 13'1 (4.57m x 3.99m)

Kitchen

8'1 x 6'9 (2.46m x 2.06m)

Bedroom

11'2 x 7'10 (3.40m x 2.39m)

Bedroom

13'0 x 8'11 (3.96m x 2.72m)

Bathroom

8'3 x 4'10 (2.51m x 1.47m)

Council Tax Band - B £1,795



Floor Plan

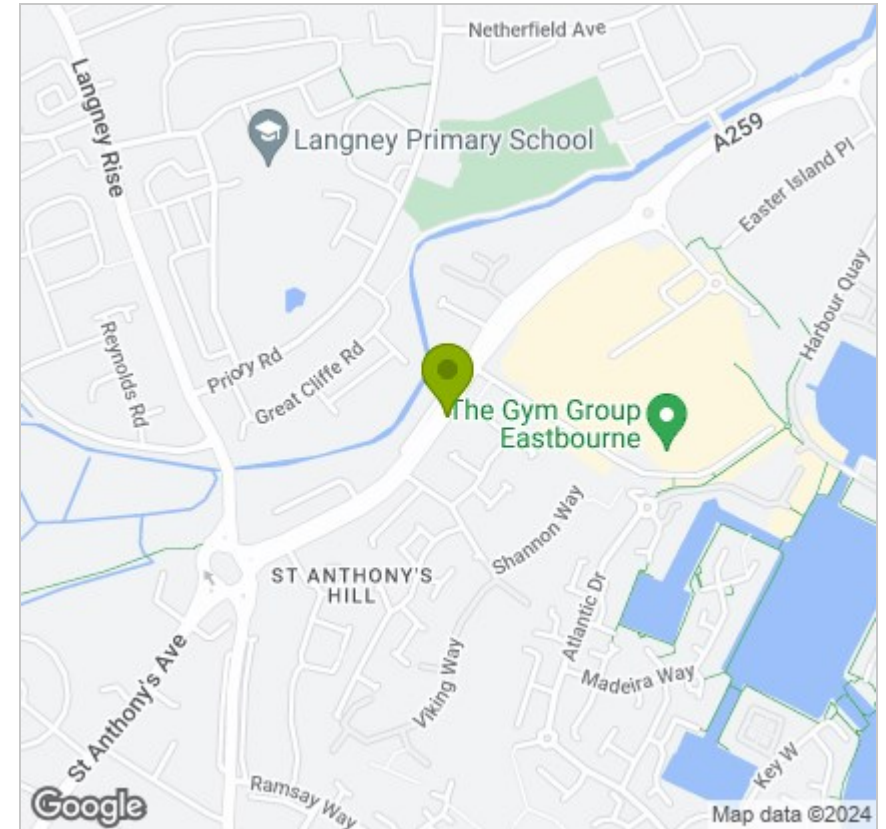


Viewing

Please contact us on 01323 723 500 if you wish to arrange a viewing appointment for this property or require further information.

These particulars, whilst believed to be accurate are set out as a general outline only for guidance and do not constitute any part of an offer or contract. Intending purchasers should not rely on them as statements of representation of fact, but must satisfy themselves by inspection or otherwise as to their accuracy. No person in this firm's employment has the authority to make or give any representation or warranty in respect of the property.

Area Map



Energy Efficiency Graph

