



OAKFIELD



Upperton Road, Eastbourne, BN21 1AG

Offers In Excess Of £145,000



## Upperton Road, Eastbourne, BN21 1AG

This beautiful studio apartment is part of The Upperton development in Eastbourne town centre. A stunning entrance welcomes residents and visitors. Premium quality materials establish the interior design ethos of the building. The beautiful lobby offers residents access to two lifts, a stairwell and the car park. The stairwell is filled with natural light from windows at each level and a large rooftop skylight

The flat has a light and airy feel due to the large windows, the kitchen is modern and has plenty of worktop space, built in appliances and plenty of storage. There is also a modern shower room, and the entrance hallway benefits from a cupboard which houses the washing machine.

The flat is located in a prime location being a short walk into town and the mainline train station, which makes it a perfect property if you want to be close to amenities.





### Kitchen/Lounge

19'7" x 13'8" (5.99 x 4.18)

### Bathroom

5'1" x 8'4" (1.55 x 2.55)

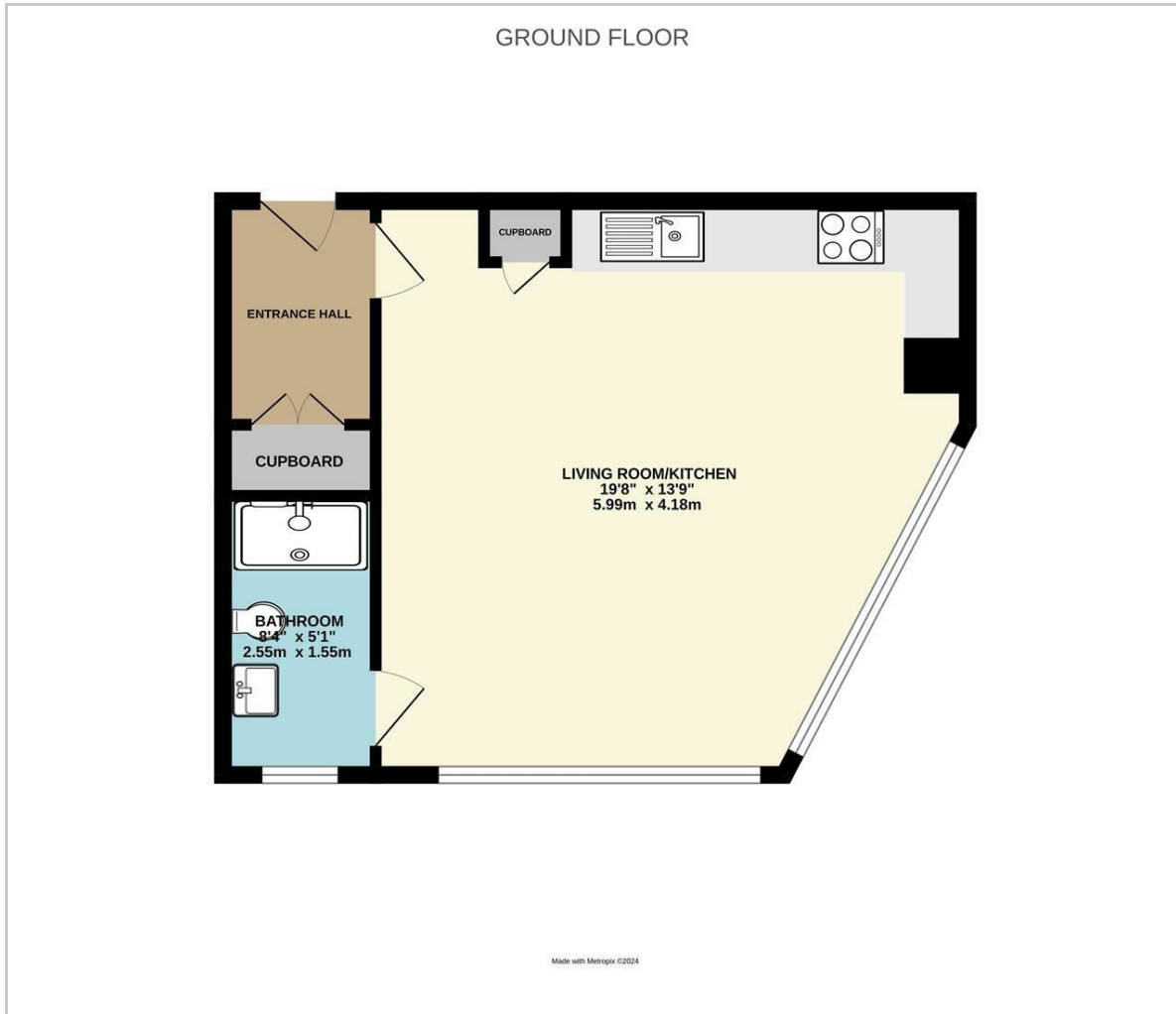
### Council Tax Band - A

### Lease Information

The seller advises that the property is offered as leasehold and has approximately 100 remaining on the lease. The service charge is approximately £1,200 per annum and a ground rent of £150 per annum. The agent has not had sight of confirmation documents and therefore the buyer is advised to obtain verification from their solicitor or surveyor.



## Floor Plan



## Viewing

Please contact us on 01323 723 500 if you wish to arrange a viewing appointment for this property or require further information.

These particulars, whilst believed to be accurate are set out as a general outline only for guidance and do not constitute any part of an offer or contract. Intending purchasers should not rely on them as statements of representation of fact, but must satisfy themselves by inspection or otherwise as to their accuracy. No person in this firm's employment has the authority to make or give any representation or warranty in respect of the property.

## Area Map



## Energy Efficiency Graph

