



OAKFIELD



Enys Road, Eastbourne, BN21 2DG

Asking Price £140,000



0



1



1



D



## Enys Road, Eastbourne, BN21 2DG

This large studio flat, located just minutes from Eastbourne Town Centre, is the perfect property for anyone looking for a quiet, cosy living space but doesn't want to be far from the hustle and bustle of the town centre.

You enter the flat directly into the living room. Immediately to your left you will find the bright and airy kitchen with plenty of work top space and room for all your appliances. There is also a newly renovated bathroom just off the kitchen.

The property is located in Enys Road, Eastbourne. With Eastbourne Town Centre and the train station less than a mile walk and the seafront just over a mile away... the location is unbeatable. You are also close to Eastbourne's numerous theatres and the famous Downs. Ample on street parking is available outside of any permitted areas. Viewings come highly recommended.

**Lounge/Kitchen**  
20'4" x 15'0" (6.20 x 4.58)



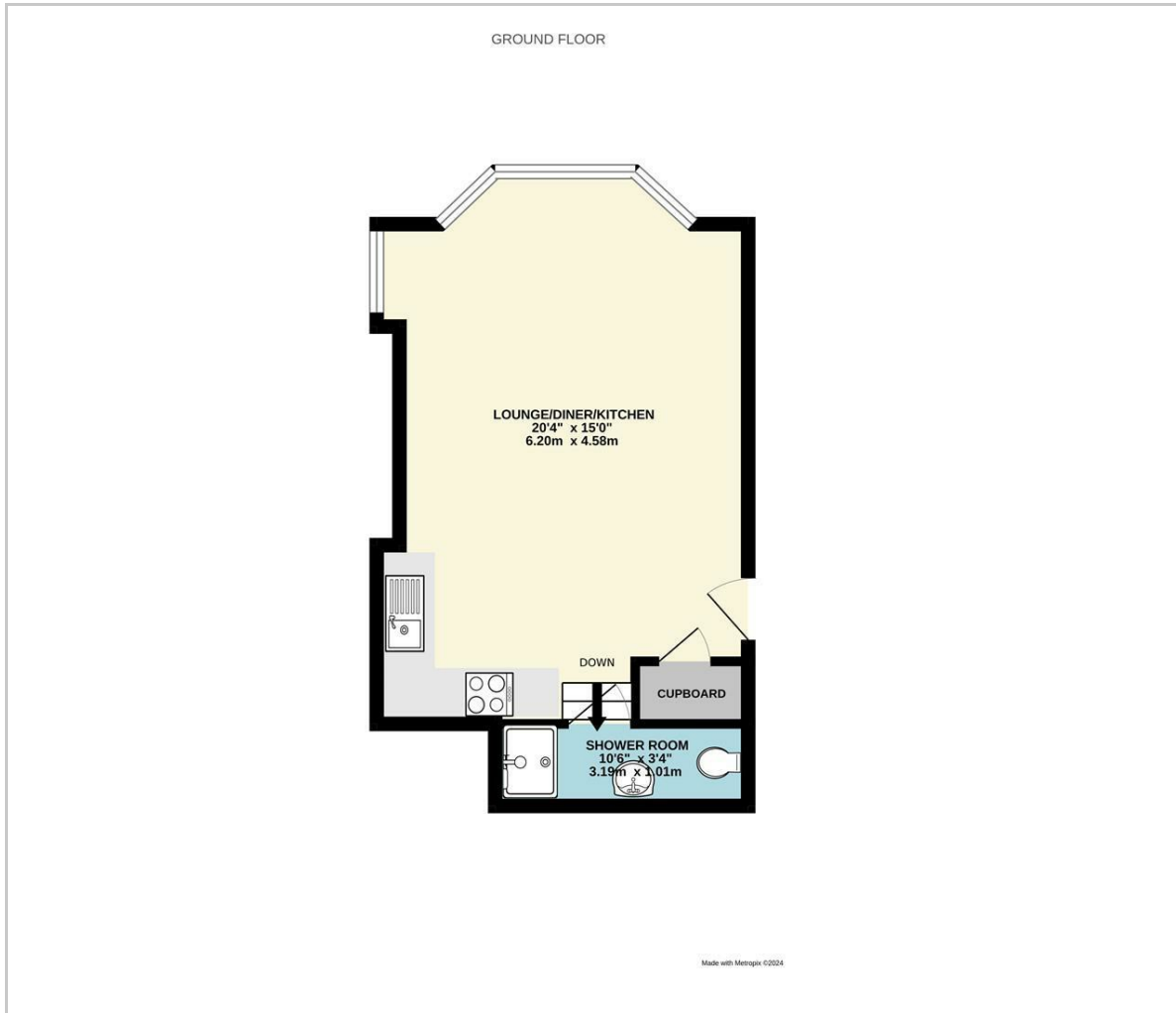




**Shower Room**  
10'5" x 3'3" (3.19 x 1.01)  
**Council Tax Band - A**



## Floor Plan



## Viewing

Please contact us on 01323 723 500 if you wish to arrange a viewing appointment for this property or require further information.

These particulars, whilst believed to be accurate are set out as a general outline only for guidance and do not constitute any part of an offer or contract. Intending purchasers should not rely on them as statements of representation of fact, but must satisfy themselves by inspection or otherwise as to their accuracy. No person in this firm's employment has the authority to make or give any representation or warranty in respect of the property.

## Area Map



## Energy Efficiency Graph

