



Horder Road

London, SW6

£695 per week
(£3,011.67 pcm)

A well presented three bedroom family house finished to a high standard located close to Parsons Green. The property comprises three double bedrooms, two bathrooms, bright reception room, modern kitchen and private patio garden.

CHESTERTONS
Fulham

Horder Road, SW6

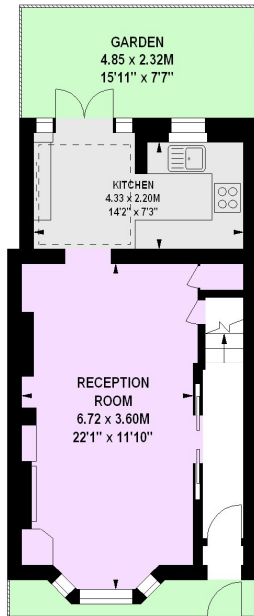
Approximate gross internal area

101.82 sq m / 1096 sq ft

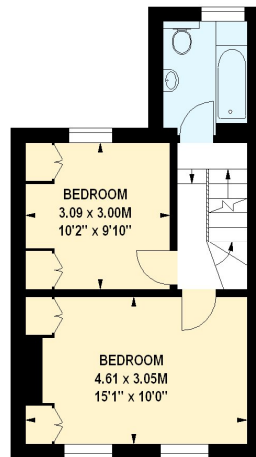
(Including Eaves Storage)

Eaves Storage

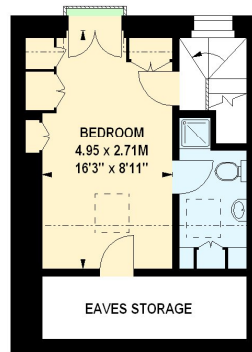
6.13 sq m / 66 sq ft



Ground Floor
434 sq ft



First Floor
356 sq ft



Second Floor
240 sq ft

The floor plan is not to scale and measurements and areas shown are approximate and therefore should be used for illustrative purposes only.
The plan been prepared in accordance with the RICS code of Measuring Practice and whilst we have confidence in the information produced, it must be not be relied on.
If there is any aspect of particular importance, you should carry out or commission your own inspection of the property.
Copyright of FeaturePRO.

Tenure: Long Let

Unfurnished

Additional tenant charges apply
Tenancy Agreement Fee: £222
References per Tenant/Guarantor: £60
Inventory check (approx. £100 – £250 inc. VAT)
[chestertons.com/property-to-rent/applicable-fees](https://www.chestertons.com/property-to-rent/applicable-fees)

Chestertons Fulham Road Lettings

654 Fulham Road
Fulham
London
SW6 5RU
lettings.fulham@chestertons.com
020 7384 9899
[chestertons.com](https://www.chestertons.com)



Chesterton Global Ltd trading as Chestertons for themselves and for the vendor of this property whose agents they are, give notice that (i) these particulars do not constitute any part of an offer or contract, (ii) all statements contained within these particulars are made without responsibility on the part of Chestertons or the vendor, (iii) whilst made in good faith, none of the statements contained within these particulars are to be relied upon as a statement or representation of fact, (iv) any intending purchasers must satisfy themselves by inspection or otherwise as to the correctness of each of the statements contained within these particulars, (v) the vendor does not make or give either Chestertons or any person in their employment any authority to make or give representation or warranty whatsoever in relation to this property. Wide angle lenses may be used. ©Copyright Chestertons | Chesterton Global Ltd | Registered Office 7th Floor, St Magnus House, 3 Lower Thames Street, London, EC3R 6HD Registered Company Number 05334580.