



Fulham Park Gardens

London, SW6

£600 per week
(£2,600 pcm)

A stunning two bedroom, two bathroom split level flat located within this desirable "Lion" house. This modern property benefits from an abundance of built in storage and a fully fitted kitchen which leads out to the lovely private patio garden.

CHESTERTONS
Fulham

Fulham Park Gardens, SW6

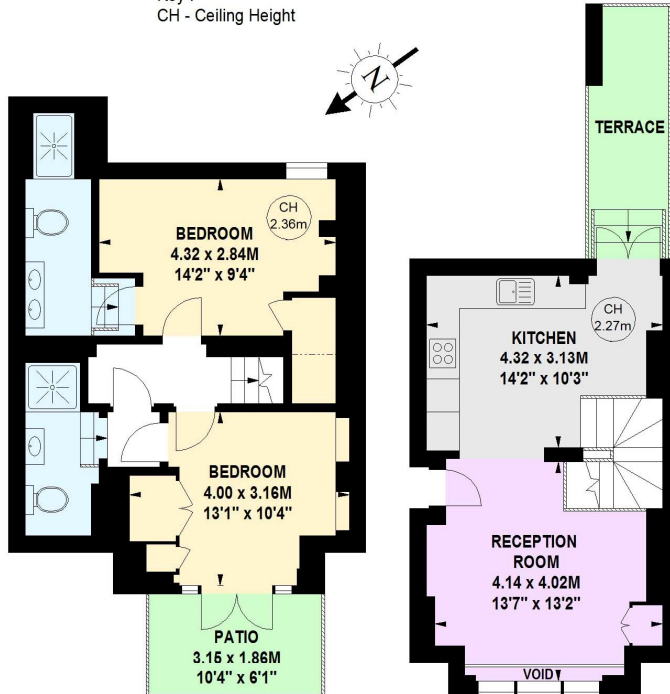
Approximate gross internal area

71.44 sq m / 769 sq ft
(Including Void)

Void area

0.65 sq m / 7 sq ft

Key :
CH - Ceiling Height



Lower Ground Floor

Raised Ground Floor

The floor plan is not to scale and measurements and areas shown are approximate and therefore should be used for illustrative purposes only. The plan has been prepared in accordance with the RICS code of Measuring Practice and whilst we have confidence in the information produced, it must not be relied on. If there is any aspect of particular importance, you should carry out or commission your own inspection of the property.
Copyright of FeaturePRO.

Tenure: Long Let

Unfurnished

Additional tenant charges apply
Tenancy Agreement Fee: £300
References per Tenant/Guarantor: £60
Inventory check (approx. £100 – £250 inc. VAT)
[chestertons.com/property-to-rent/applicable-fees](https://www.chestertons.com/property-to-rent/applicable-fees)

Energy Efficiency Rating		
	Current	Potential
Very energy efficient - lower running costs		
(92+) A		
(81-91) B		
(69-80) C	74	77
(55-68) D		
(39-54) E		
(21-38) F		
(1-20) G		
Not energy efficient - higher running costs		
England, Scotland & Wales	EU Directive 2002/91/EC	

Chestertons Parsons Green Lettings

78 New Kings Road
London
SW6 4LT
lettings.parsonsgreen@chestertons.com
02073487777
[chestertons.com](https://www.chestertons.com)



Chesterton Global Ltd trading as Chestertons for themselves and for the vendor of this property whose agents they are, give notice that (i) these particulars do not constitute any part of an offer or contract, (ii) all statements contained within these particulars are made without responsibility on the part of Chestertons or the vendor, (iii) whilst made in good faith, none of the statements contained within these particulars are to be relied upon as a statement or representation of fact, (iv) any intending purchasers must satisfy themselves by inspection or otherwise as to the correctness of each of the statements contained within these particulars, (v) the vendor does not make or give either Chestertons or any person in their employment any authority to make or give representation or warranty whatsoever in relation to this property. Wide angle lenses may be used. ©Copyright Chestertons | Chesterton Global Ltd | Registered Office 40 Connaught Street, Hyde Park, London W2 2AB Registered Company Number 5334580.