



Neroli House

14 Piazza Walk, E1

£650 per week
(£2,816.67 pcm)

Video viewing available A great, brand new two bedroom apartment to rent in the iconic Goodman's Fields. The flat has a light and airy lounge, 2 double bedrooms, 2 bathrooms, balcony and a fully fitted open plan kitchen with integrated appliances

CHESTERTONS



Neroli House

14 Piazza Walk, E1

- Two bedroom
- Two Bathroom
- Modern Building
- Balcony
- Leisure Complex
- 24 Hour Concierge



A great, brand new two bedroom apartment to rent in the iconic Goodman's Fields. The flat has a light and airy lounge, 2 double bedrooms, 2 bathrooms (1 en suite), balcony and a fully fitted open plan kitchen with integrated appliances. Further benefits include underfloor heating in the bathrooms, wooden flooring throughout the halls and lounge and built in storage in the bedrooms. This flat has an access to the onsite gymnasium, swimming pool and spa, plus 24 hour concierge, a business lounge and private cinema room. Available furnished.

Tenure: To be advised
Furnished

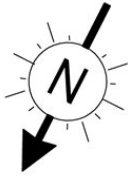
Additional tenant charges apply (fees apply to non-AST tenancies only)
Tenancy Agreement Fee: £300
References per Tenant/Guarantor: £60
Inventory check (approx. £100 – £250 inc. VAT)
[chestertons.com/property-to-rent/applicable-fees](https://www.chestertons.com/property-to-rent/applicable-fees)

Energy Efficiency Rating		
	Current	Potential
Very energy efficient - lower running costs		
(92+) A		
(81-91) B	83	83
(69-80) C		
(55-68) D		
(39-54) E		
(21-38) F		
(1-20) G		
Not energy efficient - higher running costs		
England, Scotland & Wales EU Directive 2002/91/EC		

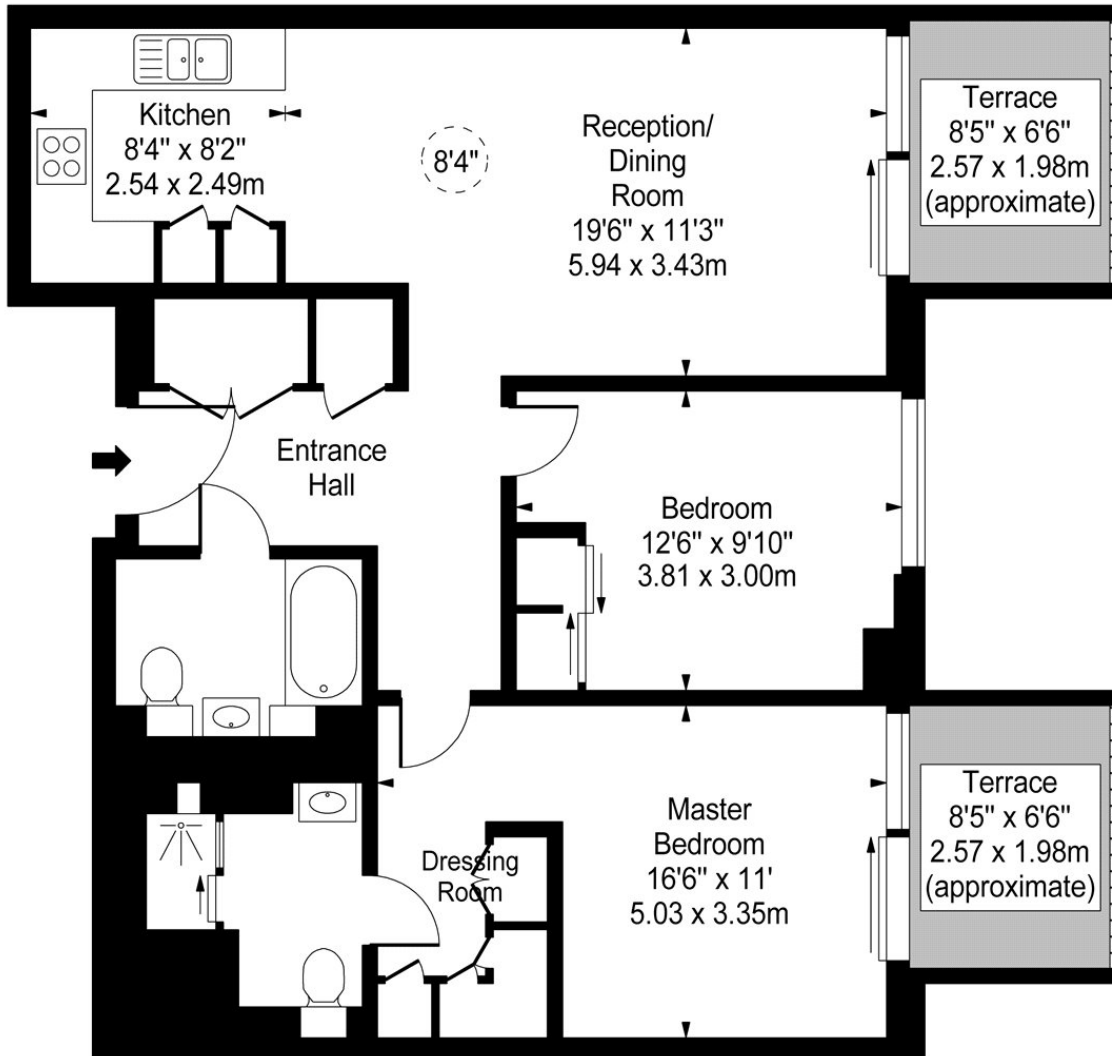
Chestertons Tower Bridge Lettings

220 Tower Bridge Road
Tower Bridge
London
SE1 2UP
lettings.towerbridge@chestertons.com
02073576911
[chestertons.com](https://www.chestertons.com)

Neroli House, Piazza Walk, E1



 - Ceiling Height



First Floor

Approx Gross Internal Area 815 Sq Ft - 75.71 Sq M

For Illustration Purposes Only - Not To Scale

www.goldlens.co.uk

Ref. No. 013085M