

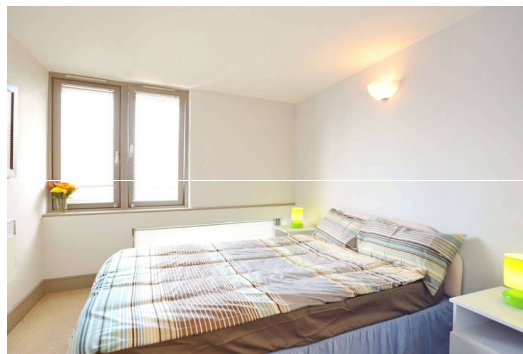


# Albany Court

18 Plumbers Row, E1

£1,700 pcm

\*Video Tour Available\* A fantastic 2 double bedroom, 2 bathroom top floor apartment conveniently located for Aldgate East Underground station and the vibrant Spitalfields and Brick Lane neighbourhoods.



# Albany Court

18 Plumbers Row, E1

- Two Double Bedrooms
- Two Bathrooms
- Close to Aldgate East Station
- Close to Spitalfields and Brick Lane.



\*Video Viewing Available\* A fantastic two double bedroom apartment conveniently located for Aldgate East Underground Station and the vibrant Spitalfields market and Brick Lane. The apartment is set of the top floor of this modern building and comprises, spacious open plan kitchen / living room, master bedroom with en-suite shower room, a further double bedroom and principal bathroom.

---

**Tenure:** To be advised

**Furnished**

Additional tenant charges apply (fees apply to non-AST tenancies only)

Tenancy Agreement Fee: £300

References per Tenant/Guarantor: £60

Inventory check (approx. £100 – £250 inc. VAT)

[chestertons.com/property-to-rent/applicable-fees](https://www.chestertons.com/property-to-rent/applicable-fees)

---

### *Chestertons Tower Bridge Lettings*

220 Tower Bridge Road

Tower Bridge

London

SE1 2UP

[lettings.towerbridge@chestertons.com](mailto:lettings.towerbridge@chestertons.com)

02073576911

[chestertons.com](https://www.chestertons.com)

Chesterton Global Ltd trading as Chestertons for themselves and for the vendor of this property whose agents they are, give notice that (i) these particulars do not constitute any part of an offer or contract, (ii) all statements contained within these particulars are made without responsibility on the part of Chestertons or the vendor, (iii) whilst made in good faith, none of the statements contained within these particulars are to be relied upon as a statement or representation of fact, (iv) any intending purchasers must satisfy themselves by inspection or otherwise as to the correctness of each of the statements contained within these particulars, (v) the vendor does not make or give either Chestertons or any person in their employment any authority to make or give representation or warranty whatsoever in relation to this property. Wide angle lenses may be used. ©Copyright Chestertons | Chesterton Global Ltd | Registered Office 40 Connaught Street, Hyde Park, London W2 2AB Registered Company Number 05334580.



This paper is  
100% recyclable