



Wiverton Tower

4 New Drum Street, E1

4,398 £ per month
(1,014.92 £ per week)

A stunning three bedroom, two bathroom apartment set on the 21st floor of this luxury development, benefitting a bright open plan kitchen / living room with full length dual aspect windows, three bedrooms, modern bathroom, en-suite shower room and winter garden.

CHESTERTONS



Wiverton Tower

4 New Drum Street, E1

- Luxury Development
- Three Bedrooms
- Two Bathrooms
- Winter Garden
- Gym
- 24 Hour Concierge



Residence of Aldgate Place can take advantage of the onsite facilities, including; a 24 hour concierge, residents gym and communal roof terrace. The development is a perfectly located moments from Aldgate East station, a walk to Spitalfields market and ideally positioned for The City.

Minimum Term: 12 months
Deposit Required: 0.00 £
Local Authority:
Council Tax Band:
EPC Rating: To be confirmed
Furnished, Part Furnished

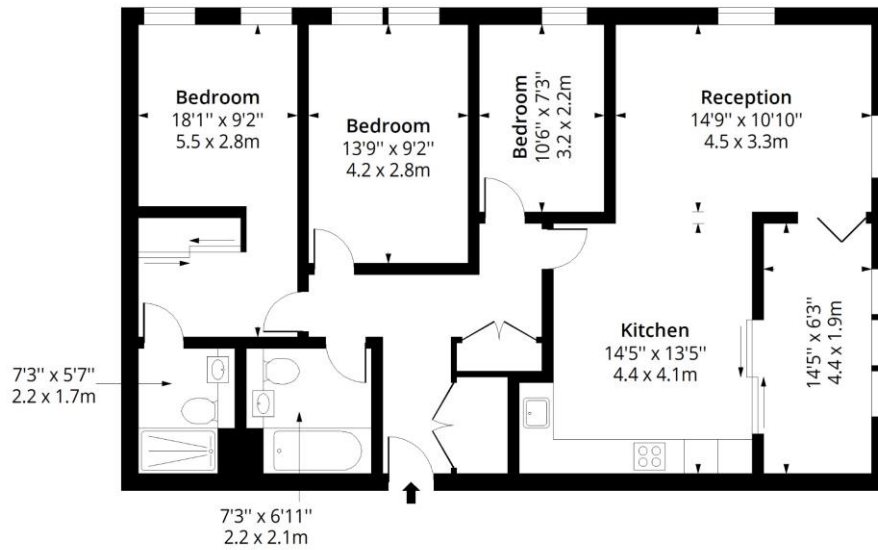
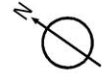
Chestertons Tower Bridge Lettings

220 Tower Bridge Road
Tower Bridge
London
SE1 2UP
towerbridgelettingsusers@chestertons.co.uk
02073576911
chestertons.co.uk

Additional tenant charges apply (fees apply to non-AST tenancies only)
Tenancy Agreement Fee: £300
References per Tenant/Guarantor: £60
Inventory check (approx. £100 – £250 inc. VAT)
[chestertons.co.uk/property-to-rent/applicable-fees](https://www.chestertons.co.uk/property-to-rent/applicable-fees)

Wiverton Tower, E1

Approx. Gross Internal Area 1097 Sq Ft - 101.91 Sq M



Twenty First Floor

Floor Area 1097 Sq Ft - 101.91 Sq M



Measured according to RICS IPMS2. Floor plan is for illustrative purposes only and is not to scale. Every attempt has been made to ensure the accuracy of the floor plan shown, however all measurements, fixtures, fittings and data shown are an approximate interpretation for illustrative purposes only. 1 sq m = 10.76 sq feet.

lpaplus.com

Date: 3/2/2026



This paper is
100% recyclable