



Times Square

London, E1

£4,500 per month
(£1,038.46 per week)

MAX. TWO SHARERS A three bedroom, two bathroom Penthouse apartment with a wraparound balcony set on the fifth floor of this modern development within moments from Aldgate Underground station and easy reach to the vibrant Spitalfields.



Times Square

London, E1

- THREE BEDROOM
- TWO BATHROOM
- BALCONY
- CONCIERGE
- MODERN APARTMENT
- AVAILABLE NOW



An amazing three bedroom, two bathroom penthouse apartment with a wrap around balcony set on the fifth floor of this modern development within moments from Aldgate Underground station and easy reach to the vibrant Spitalfields. The property can come with two parking spaces by separate negotiation.

The City of London is home to some of London's most popular attractions, including Tower Bridge, The Tower of London and St Paul's Cathedral. The area boasts world famous restaurants and is home to notable buildings such as the Gherkin & Heron Tower. Further attractions include Spitalfields & Leadenhall markets. Although The City is easy to walk around, it is excellently connected with a vast number of underground stations as-well as Liverpool Street, Cannon Street & Fenchurch Street mainline stations.

Minimum Term: 12 months
Deposit Required: £5,192.31
Local Authority: Tower Hamlets
Council Tax Band: G
EPC Rating: B
Furnished

Energy Efficiency Rating		
	Current	Potential
Very energy efficient - lower running costs		
A (94-100)		
B (81-93)		
C (69-80)		
D (55-68)		
E (39-54)		
F (21-38)		
G (1-20)		
Not energy efficient - higher running costs		
England, Scotland & Wales	82	84
EU Directive 2002/91/EC		

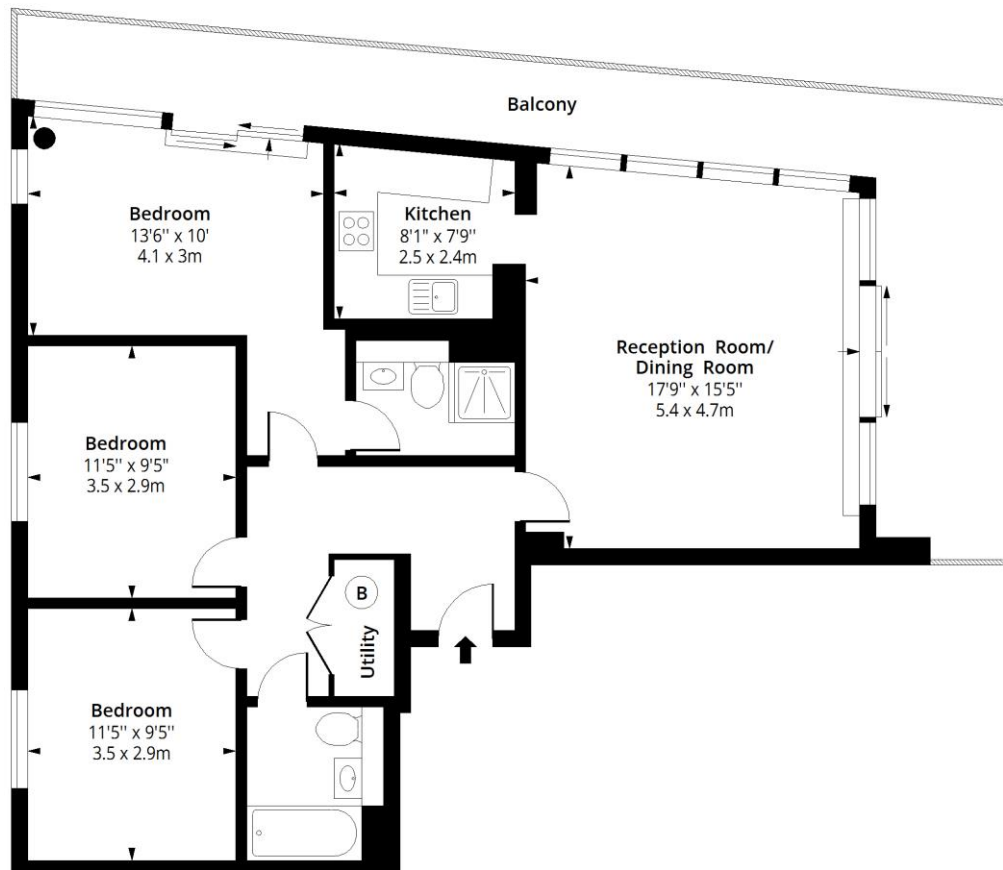
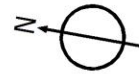
Chestertons Tower Bridge Lettings

220 Tower Bridge Road
 Tower Bridge
 London
 SE1 2UP
 towerbridge@chestertons.co.uk
 02073576911
 chestertons.co.uk

Additional tenant charges apply (fees apply to non-AST tenancies only)
 Tenancy Agreement Fee: £300
 References per Tenant/Guarantor: £60
 Inventory check (approx. £100 – £250 inc. VAT)
 chestertons.co.uk/property-to-rent/applicable-fees

Times Square, E1

Approx. Gross Internal Area 940 Sq Ft - 87.33 Sq M (Excluding Balcony)
Approx. Gross Internal Area 1215 Sq Ft - 112.87 Sq M (Including Balcony)



Fifth Floor

Floor Area 940 Sq Ft - 87.33 Sq M

Floor plan is for illustrative purposes only and is not to scale. Every attempt has been made to ensure the accuracy of the floor plan shown, however all measurements, fixtures, fittings and data shown are an approximate interpretation for illustrative purposes only.

lpaplus.com



This paper is
100% recyclable