



# St. Gabriel Walk

London, SE1

£3,750 per month  
(£865.38 per week)

**\*SHORT LET\*** An amazing flat set within the Landmark, One The Elephant. The property comprises double bedroom, open plan living space, modern bathroom and a private balcony.





# St. Gabriel Walk

London, SE1

- SHORT LET
- One Bedroom
- Balcony
- All Bills Included



\*SHORT LET\* An amazing flat set within the Landmark, One The Elephant. The property comprises double bedroom, open plan living space, modern bathroom and a private balcony. The apartment benefits from 24hr concierge and secure cycle storage.

**Minimum Term:** 6 months  
**Deposit Required:** £4,326.92  
**Local Authority:** London Borough of Southwark (Council Tax)  
**Council Tax Band:** D  
**EPC Rating:** B  
**Furnished**

Energy Efficiency Rating		
	Current	Potential
Very energy efficient - lower running costs		
<b>A</b> (94-100)		
<b>B</b> (81-93)	84	84
<b>C</b> (69-80)		
<b>D</b> (55-68)		
<b>E</b> (39-54)		
<b>F</b> (21-38)		
<b>G</b> (1-20)		
Not energy efficient - higher running costs		
England, Scotland & Wales EU Directive 2002/91/EC		

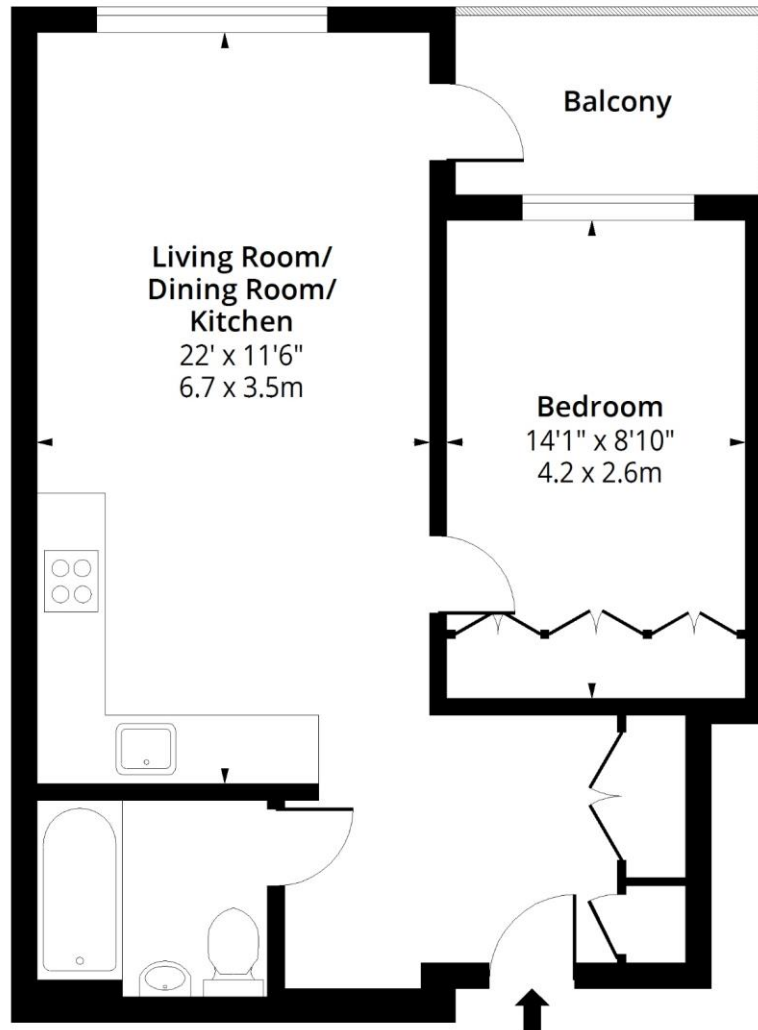
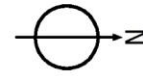
### *Chestertons Tower Bridge Lettings*

220 Tower Bridge Road  
 Tower Bridge  
 London  
 SE1 2UP  
 towerbridge@chestertons.co.uk  
 02073576911  
 chestertons.co.uk

Additional tenant charges apply (fees apply to non-AST tenancies only)  
 Tenancy Agreement Fee: £300  
 References per Tenant/Guarantor: £60  
 Inventory check (approx. £100 – £250 inc. VAT)  
 chestertons.co.uk/property-to-rent/applicable-fees

# St. Gabriel Walk, SE1

Approx. Gross Internal Area 537 Sq Ft - 49.89 Sq M



## Twelfth Floor

Floor Area 537 Sq Ft - 49.89 Sq M

Floor plan is for illustrative purposes only and is not to scale. Every attempt has been made to ensure the accuracy of the floor plan shown, however all measurements, fixtures, fittings and data shown are an approximate interpretation for illustrative purposes only.

lpaplus.com



This paper is  
100% recyclable