

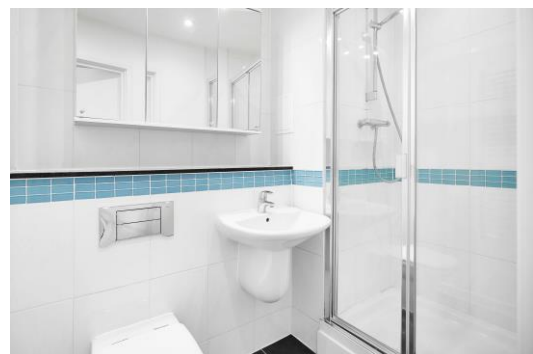


Chi Building

Crowder Street, E1

£2,816.67 per month
(£650 per week)

A well-presented two double bedroom, two bathroom apartment. The property benefits from a private balcony, open plan fully fitted kitchen, contemporary bathroom suites and wood flooring.



Chi Building

Crowder Street, E1

- TWO BEDROOMS
- TWO BATHROOMS
- BALCONY
- OPEN PLAN LIVING SPACE



A well-presented two double bedroom, two bathroom apartment which is within walking distance of City of London, Tower Bridge and St Katherine's Dock. The property boasts approximately 857 sq. ft. of living space and benefits from a private balcony accessed from the living room and second bedroom, open plan fully fitted stylish kitchen, contemporary bathroom suites and wood flooring. The development offers a locked bike store and secure video entry system.

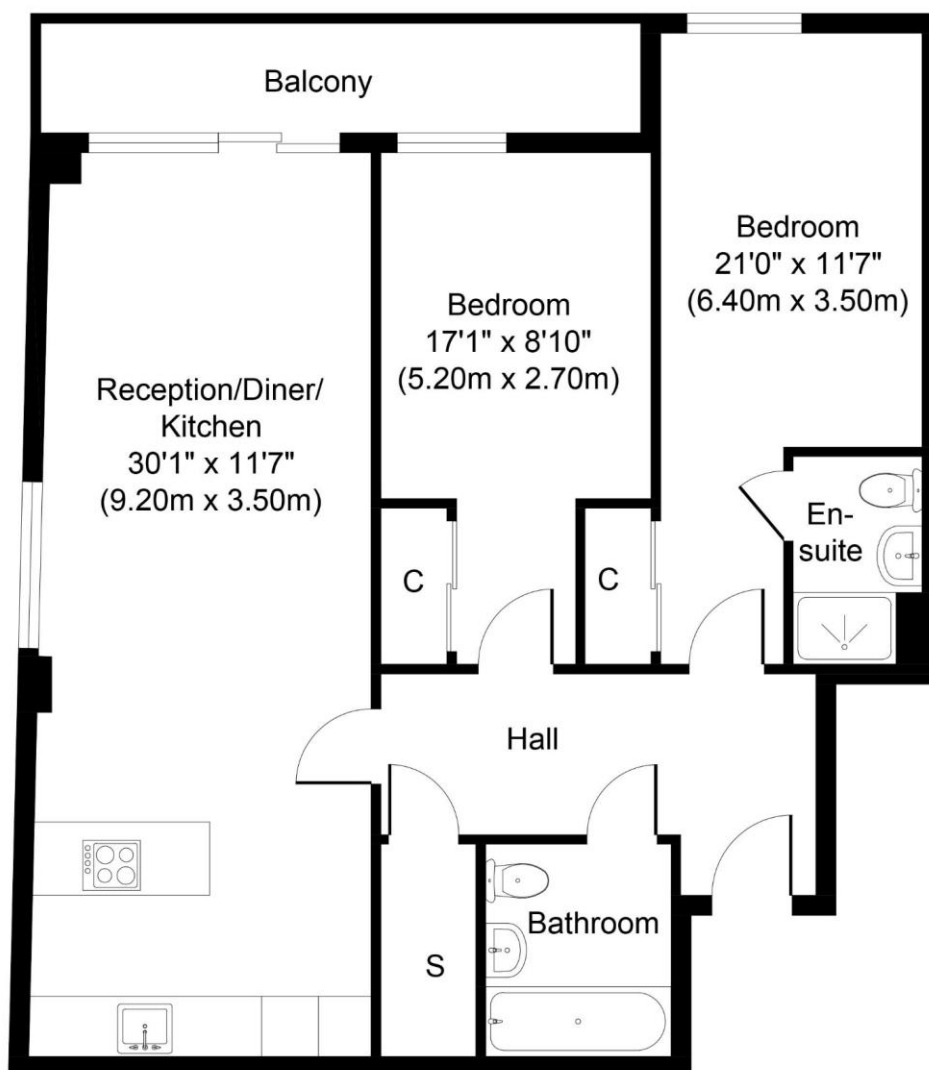
Minimum Term: 12 months
Deposit Required: £3,250.00
Local Authority: Tower Hamlets
Council Tax Band: E
EPC Rating: B
Furnished

Energy Efficiency Rating		
	Current	Potential
Very energy efficient - lower running costs		
(94-100) A		
(81-93) B	83	83
(69-80) C		
(55-68) D		
(39-54) E		
(21-38) F		
(1-20) G		
Not energy efficient - higher running costs		
England, Scotland & Wales EU Directive 2002/91/EC		

Chestertons Tower Bridge Lettings

220 Tower Bridge Road
 Tower Bridge
 London
 SE1 2UP
lettings.towerbridge@chestertons.co.uk
 02073576911
chestertons.co.uk

Additional tenant charges apply (fees apply to non-AST tenancies only)
 Tenancy Agreement Fee: £300
 References per Tenant/Guarantor: £60
 Inventory check (approx. £100 – £250 inc. VAT)
chestertons.co.uk/property-to-rent/applicable-fees



First Floor
Approximate Floor Area
857 sq. ft
(80.0 sq. m)

Whilst every attempt has been made to ensure the accuracy of the floor plan contained here, measurements of doors, windows, rooms and any other items are approximate and no responsibility is taken for any error, omission, or mis-statement. This plan is for illustrative purposes only and should be used as such by any prospective purchaser or tenant. The services, systems and appliances shown have not been tested and no guarantee as to their operability or efficiency can be given.

Copyright V360 Ltd 2017 | www.houseviz.com

