



Vantage Court

551 Old Kent Road, SE1

£2,300 per month
(£530.77 per week)

Stylish two-bedroom penthouse apartment presented in excellent condition with expansive balcony providing stunning views across the city

CHESTERTONS



Vantage Court

551 Old Kent Road, SE1

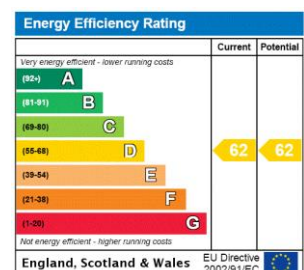
- Two-bedroom
- One-bathroom
- Open plan kitchen living area
- Balcony
- Leasehold
- Modern



This modern apartment comprises an open plan living space with fully fitted kitchen boasting floor to ceiling windows and access to the South facing balcony with stunning views across the city. The principle bedroom features fitted wardrobes and provides another access point to the balcony. The second double bedroom has fitted wardrobes and an Eastern aspect with views of Canary Wharf. The fully tiled family bathroom is modern and has a three-piece suite.

Vantage Court is a boutique development well connected to central London with frequent main bus routes into London Bridge and the City. South Bermondsey Train Station is moments away and there are a number of large supermarkets, shops and restaurants nearby in addition to the popular Burgess Park.

Minimum Term: 12 months
Deposit Required: £2,653.85
Local Authority:
Council Tax Band: C
EPC Rating: D
Furnished



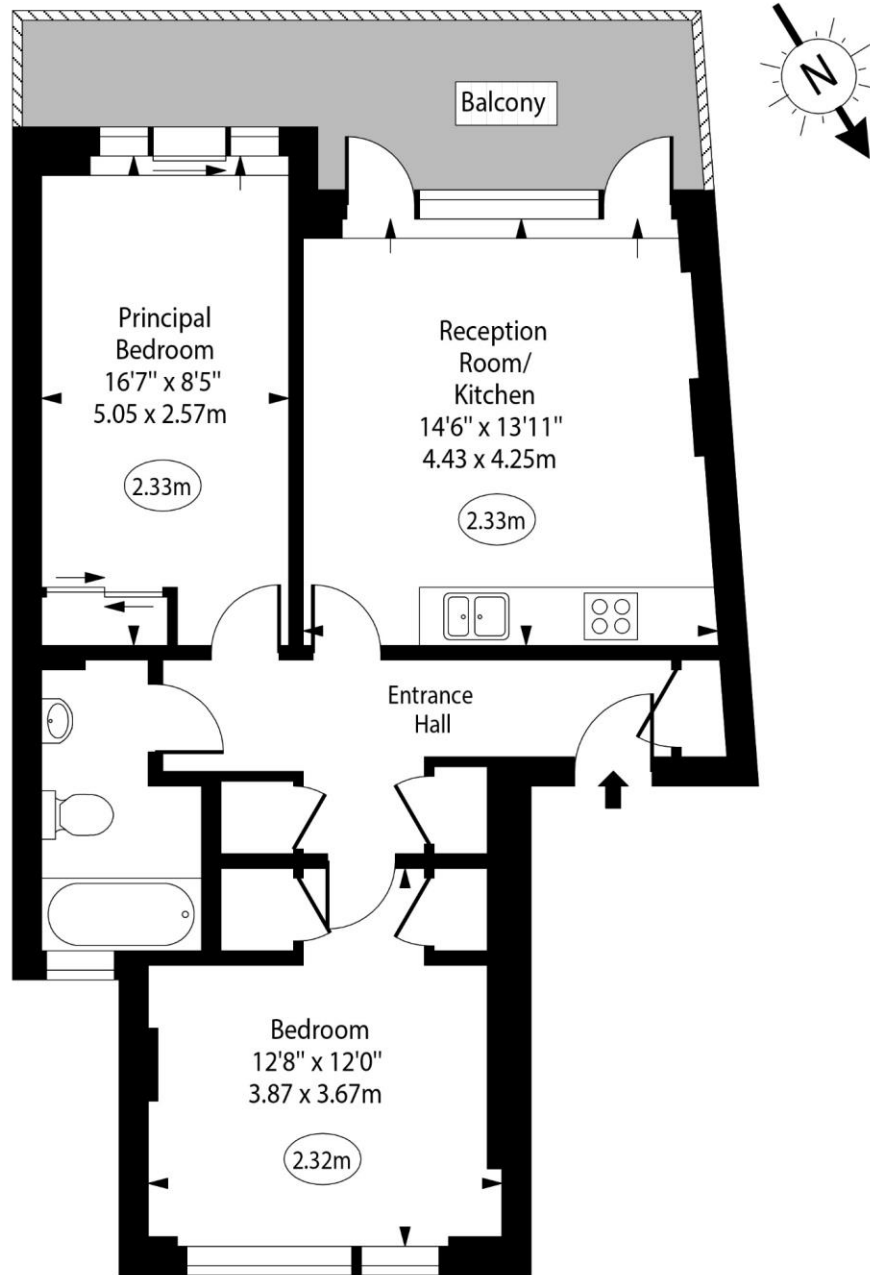
Chestertons Tower Bridge Lettings

220 Tower Bridge Road
 Tower Bridge
 London
 SE1 2UP
 towerbridge@chestertons.co.uk
 02073576911
 chestertons.co.uk

Additional tenant charges apply (fees apply to non-AST tenancies only)
 Tenancy Agreement Fee: £300
 References per Tenant/Guarantor: £60
 Inventory check (approx. £100 – £250 inc. VAT)
 chestertons.co.uk/property-to-rent/applicable-fees

Vantage Court, Old Kent Road, SE1

○ - Ceiling Height



Fourth Floor

Approx Gross Internal Area 650 Sq Ft - 60.39 Sq M

For Illustration Purposes Only - Not To Scale

