

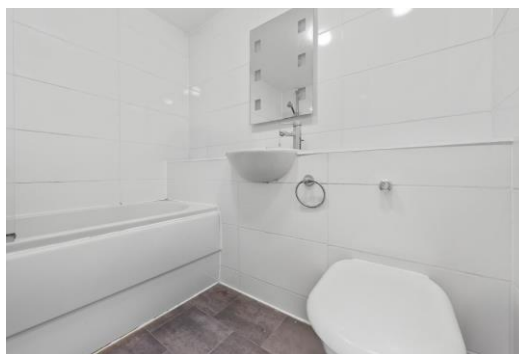


## Cape Yard

London, E1W

£2,400 per month  
(£553.85 per week)

A large 2 bedroom 2 bathroom apartment to rent in the heart of Wapping. The apartment benefits from a large living area, separate kitchen, two double bedrooms, two bathrooms, access to communal common grounds and day time concierge.



# Cape Yard

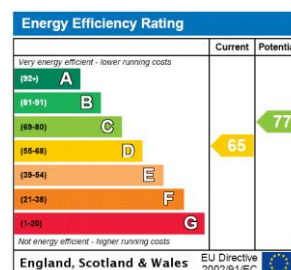
London, E1W

- TWO BEDROOM
- TWO BATHROOM
- FURNISHED



A large 2 bedroom 2 bathroom apartment to rent in the heart of Wapping. The apartment benefits from a large living area, separate kitchen, two double bedrooms, two bathrooms, access to communal common grounds and day time concierge.

**Minimum Term:** 12 months  
**Deposit Required:** £2,769.23  
**Local Authority:** Tower Hamlets  
**Council Tax Band:** E  
**EPC Rating:** D  
**Furnished**



### Chestertons Tower Bridge Lettings

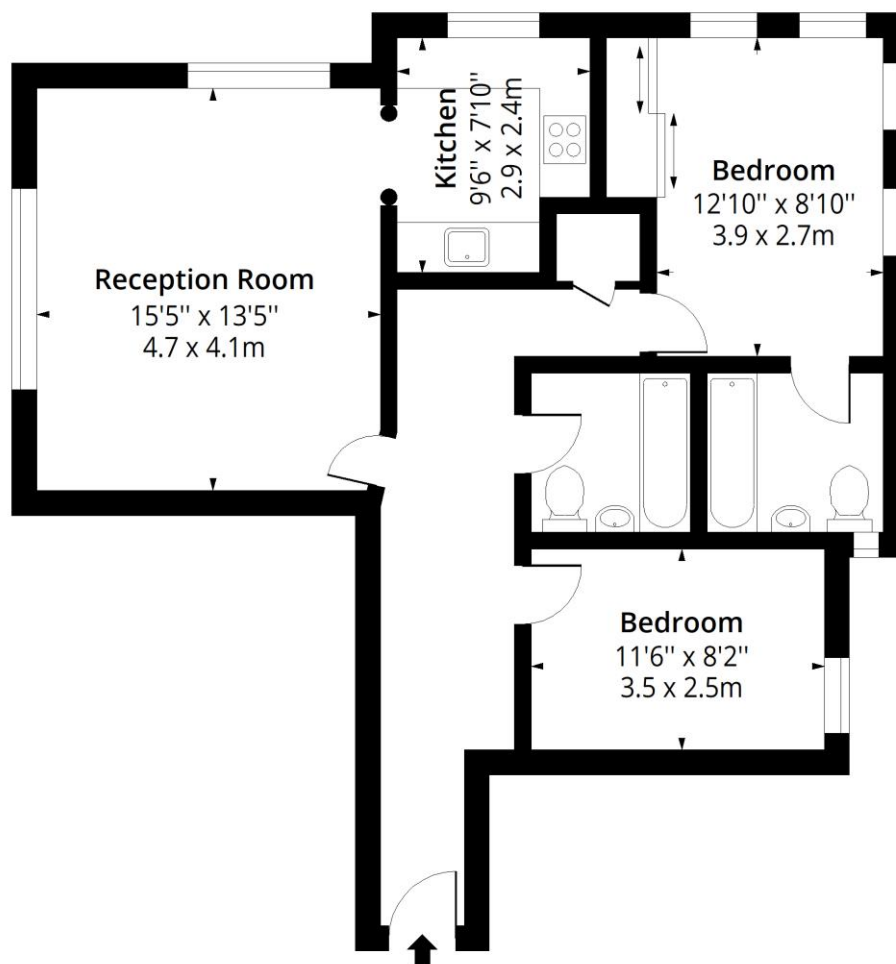
220 Tower Bridge Road  
 Tower Bridge  
 London  
 SE1 2UP  
[towerbridgelettingsusers@chestertons.co.uk](mailto:towerbridgelettingsusers@chestertons.co.uk)  
 02073576911  
[chestertons.co.uk](http://chestertons.co.uk)

Additional tenant charges apply (fees apply to non-AST tenancies only)  
 Tenancy Agreement Fee: £300  
 References per Tenant/Guarantor: £60  
 Inventory check (approx. £100 – £250 inc. VAT)  
[chestertons.co.uk/property-to-rent/applicable-fees](http://chestertons.co.uk/property-to-rent/applicable-fees)



# Cape Yard, E1W

Approx. Gross Internal Area 763 Sq Ft - 70.88 Sq M



## First Floor

Floor Area 763 Sq Ft - 70.88 Sq M



**Certified  
Property  
Measurer**

Measured according to RICS IPMS2. Floor plan is for illustrative purposes only and is not to scale. Every attempt has been made to ensure the accuracy of the floor plan shown, however all measurements, fixtures, fittings and data shown are an approximate interpretation for illustrative purposes only. 1 sq m = 10.76 sq feet.

[lpaplus.com](http://lpaplus.com)



This paper is  
100% recyclable