



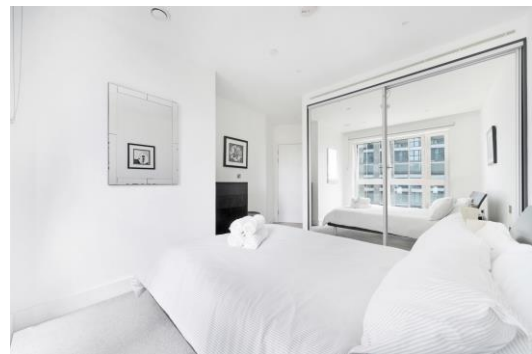
# Wiverton Tower

4 New Drum Street, E1

£3,000 per month  
(£692.31 per week)

A stunning two bedroom apartment found on the 8th floor of this development, Aldgate Place. The property benefits from having a spacious open plan reception, winter garden, two double bedrooms and modern bathroom.

**CHESTERTONS**



# Wiverton Tower

4 New Drum Street, E1

- Two Double Bedroom
- Almost 1000sqft
- Winter Garden
- 24 Hour Concierge
- Residents Gym
- Communal Roof Terrace





A stunning large two bedroom apartment on the 8th floor of this recently built new development, Aldgate Place. The property benefits from having a spacious open plan reception room, winter garden, two double bedrooms with built in storage and two beautifully finished bathrooms (one en-suite). Further benefits include a 24 hour concierge, residents gym and communal roof terrace. The development is a stones throw from Aldgate East station and ideally positioned for The City.

**Minimum Term:** 12 months  
**Deposit Required:** £3,461.54  
**Local Authority:** Tower Hamlets  
**Council Tax Band:** F  
**EPC Rating:** B  
**Furnished**

Energy Efficiency Rating		
	Current	Potential
Very energy efficient - lower running costs		
<b>A</b> (92-100)		
<b>B</b> (81-91)	86	86
<b>C</b> (69-80)		
<b>D</b> (55-68)		
<b>E</b> (39-54)		
<b>F</b> (21-38)		
<b>G</b> (1-20)		
Not energy efficient - higher running costs		
England, Scotland & Wales		EU Directive 2002/91/EC

### Chestertons Tower Bridge Lettings

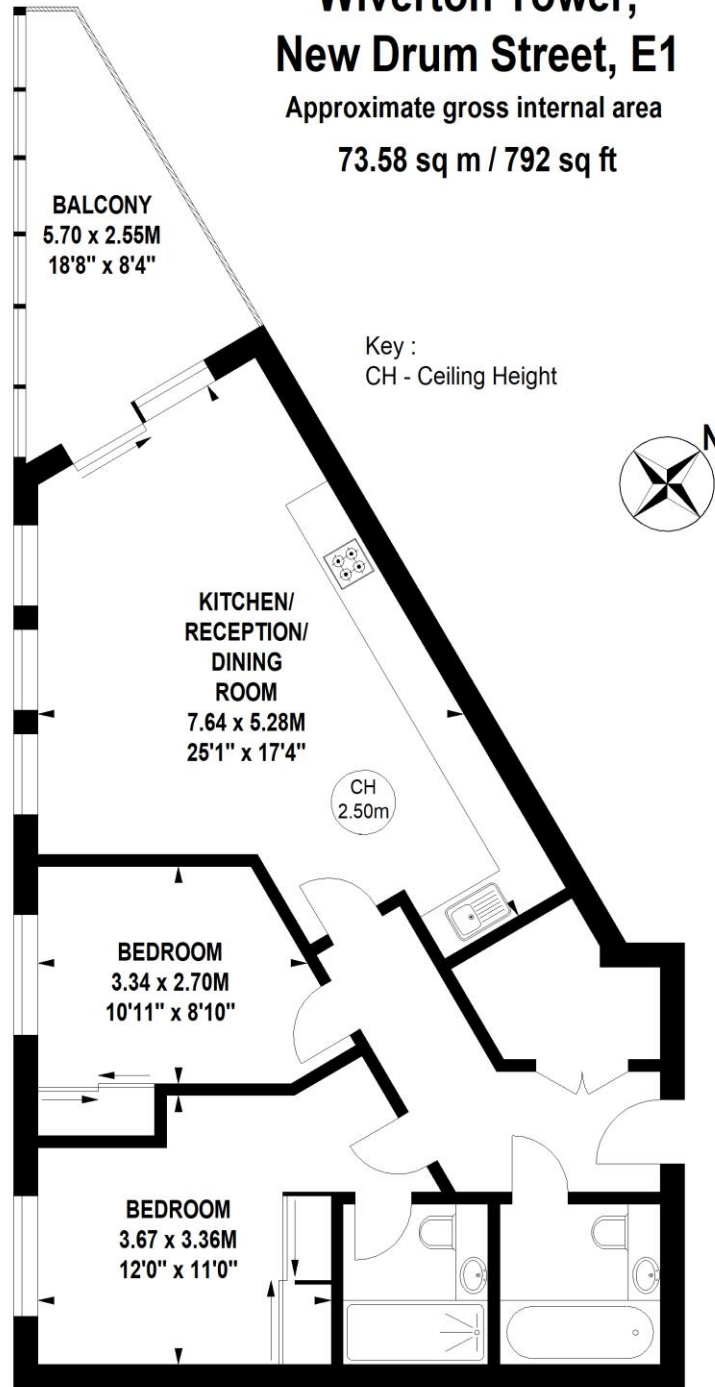
220 Tower Bridge Road  
 Tower Bridge  
 London  
 SE1 2UP  
[towerbridgelettingsusers@chestertons.co.uk](mailto:towerbridgelettingsusers@chestertons.co.uk)  
 02073576911  
[chestertons.co.uk](http://chestertons.co.uk)

Additional tenant charges apply (fees apply to non-AST tenancies only)  
 Tenancy Agreement Fee: £300  
 References per Tenant/Guarantor: £60  
 Inventory check (approx. £100 – £250 inc. VAT)  
[chestertons.co.uk/property-to-rent/applicable-fees](http://chestertons.co.uk/property-to-rent/applicable-fees)

# Wiverton Tower, New Drum Street, E1

Approximate gross internal area

73.58 sq m / 792 sq ft



## Eighth Floor

Not to scale, for guidance only and must not be relied upon as a statement of fact.  
All measurements and areas are approximate only

