

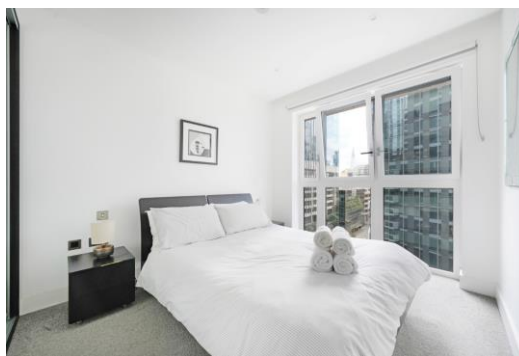
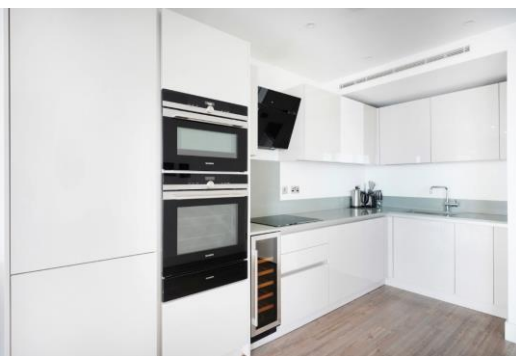


Wiverton Tower

4 New Drum Street, E1

3,700 £ per month
(853.85 £ per week)

A stunning two bedroom apartment found on the 8th floor of this development, Aldgate Place. The property benefits from having a spacious open plan reception, winter garden, two double bedrooms and modern bathroom.



Wiverton Tower

4 New Drum Street, E1

- Two Double Bedroom
- Almost 1000sqft
- Winter Garden
- 24 Hour Concierge
- Residents Gym
- Communal Roof Terrace



A stunning large two bedroom apartment on the 8th floor of this recently built new development, Aldgate Place. The property benefits from having a spacious open plan reception room, winter garden, two double bedrooms with built in storage and two beautifully finished bathrooms (one en-suite). Further benefits include a 24 hour concierge, residents gym and communal roof terrace. The development is a stones throw from Aldgate East station and ideally positioned for The City.

Quick Viewing Highly Recommended

Minimum Term: 12 months
Deposit Required: 4,269.23 £
Local Authority:
Council Tax Band:
EPC Rating: B
Furnished

Chestertons Tower Bridge Lettings

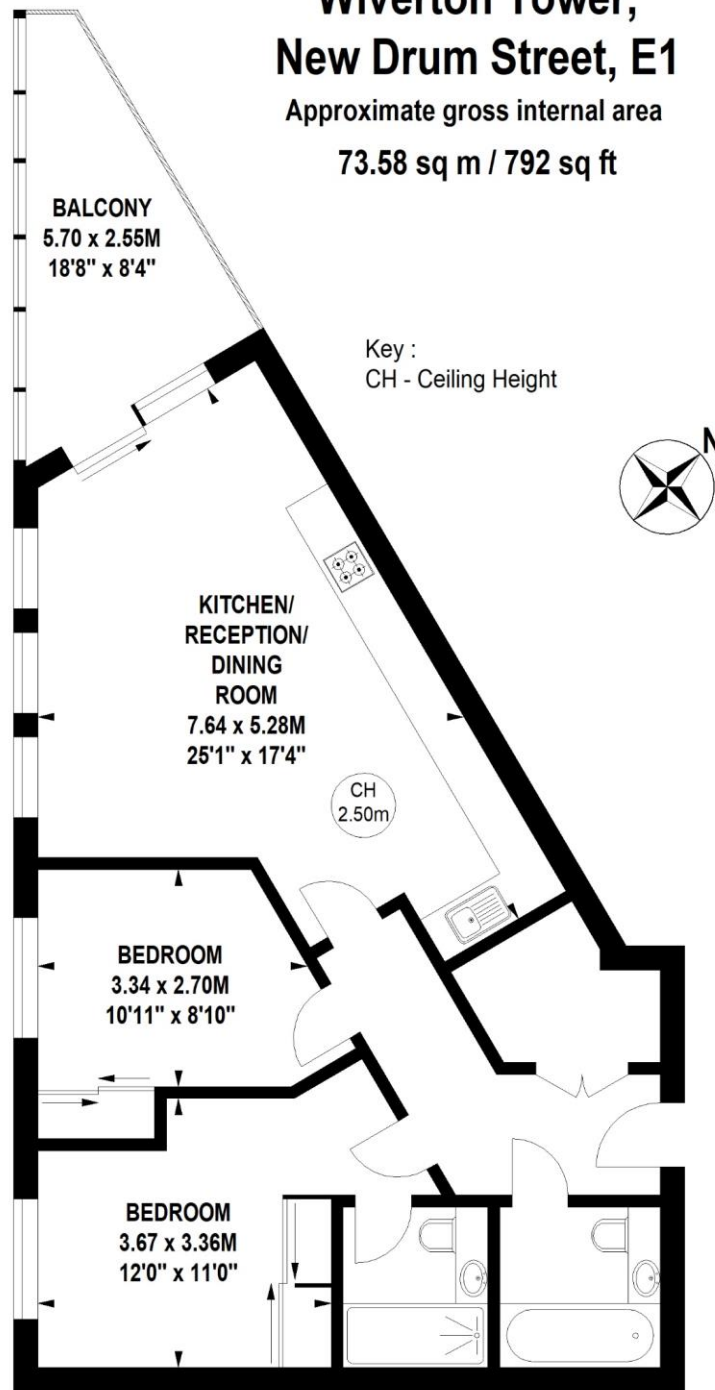
220 Tower Bridge Road
Tower Bridge
London
SE1 2UP
towerbridge@chestertons.co.uk
02073576911
[chestertons.co.uk](https://www.chestertons.co.uk)

Additional tenant charges apply (fees apply to non-AST tenancies only)
Tenancy Agreement Fee: £300
References per Tenant/Guarantor: £60
Inventory check (approx. £100 – £250 inc. VAT)
[chestertons.co.uk/property-to-rent/applicable-fees](https://www.chestertons.co.uk/property-to-rent/applicable-fees)

Wiverton Tower, New Drum Street, E1

Approximate gross internal area

73.58 sq m / 792 sq ft



Eighth Floor

Not to scale, for guidance only and must not be relied upon as a statement of fact.
All measurements and areas are approximate only

