



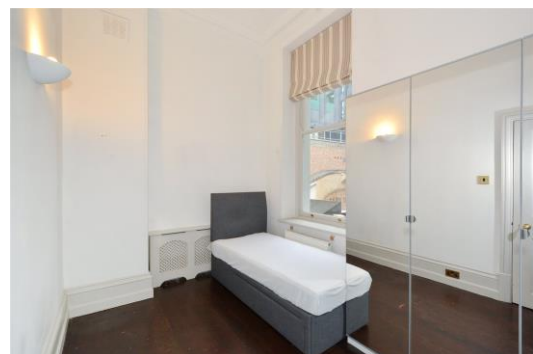
Crutched Friars

London, EC3N

£3,000 per month
(£692.31 per week)

An amazing two bedroom flat located in the heart of the City of London. The property offers larger than usual reception room, two bedrooms, two bathrooms and separate kitchen.

CHESTERTONS



Crutched Friars

London, EC3N

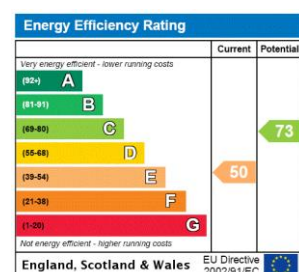
- LARGE LIVING ROOM
- SEPARATE KITCHEN
- TWO BEDROOM
- TWO BATHROOM



A huge two bedroom apartment situated in the City of London and surrounded by an abundance of amenities. This nearly 1200 sq. ft property boasts a vast reception room with dining area, separate kitchen, bathroom suite, master bedroom with large en-suite shower room, second double bedroom. The property is finished to a high standard throughout and is offered fully furnished.

The City of London is home to some of London's most popular attractions, including Tower Bridge, The Tower of London and St Paul's Cathedral. The area boasts world famous restaurants and is home to notable buildings such as the Gherkin & Heron Tower.

Minimum Term: 12 months
Deposit Required: £3,461.54
Local Authority: City Of London
Council Tax Band: F
EPC Rating: E
Part Furnished, Unfurnished



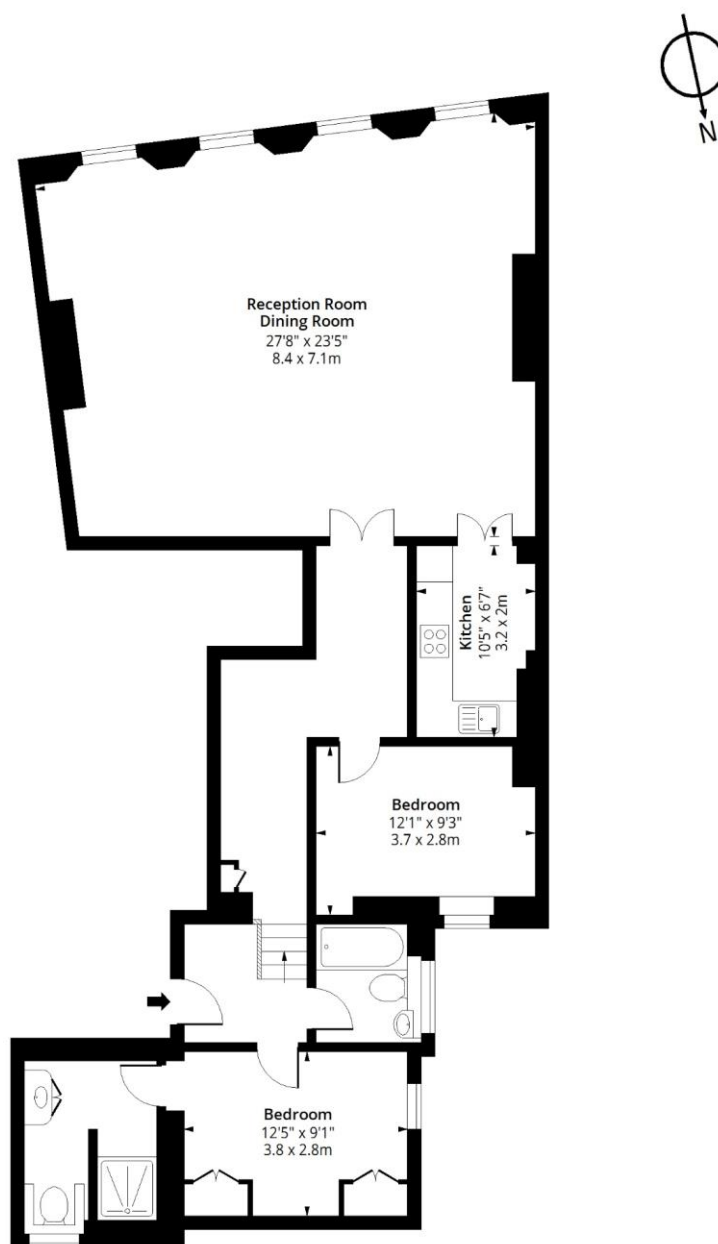
Chestertons Tower Bridge Lettings

220 Tower Bridge Road
 Tower Bridge
 London
 SE1 2UP
lettings.towerbridge@chestertons.co.uk
 02073576911
chestertons.co.uk

Additional tenant charges apply (fees apply to non-AST tenancies only)
 Tenancy Agreement Fee: £300
 References per Tenant/Guarantor: £60
 Inventory check (approx. £100 – £250 inc. VAT)
chestertons.co.uk/property-to-rent/applicable-fees

Crutched Friars, EC3N

Approx. Gross Internal Area 1181 Sq Ft - 109.71 Sq M



First Floor

Floor Area 1181 Sq Ft - 109.71 Sq M

Floor plan is for illustrative purposes only and is not to scale. Every attempt has been made to ensure the accuracy of the floor plan shown, however all measurements, fixtures, fittings and data shown are an approximate interpretation for illustrative purposes only.

lpaplus.com

