



# Denmark Road

London, SE5

£1,400 pcm

A fantastic bright 1 bedroom apartment that has been completely renovated throughout. This stylish apartment is offered as furnished and features, a spacious double bedroom, open plan kitchen / living room and modern bathroom.

**CHESTERTONS**



# Denmark Road

## London, SE5

- BRIGHT AND SPACIOUS
- 1 BATHROOM
- NEWLY REFURBISHED
- CONVERSION
- NEW FURNISHED
- WOODEN FLOORS
- 2ND FLOOR





A fantastic bright 1 bedroom apartment that has been completely renovated throughout. This stylish apartment is offered as furnished and features, a spacious double bedroom, open plan kitchen / living room and modern bathroom.

**Tenure:** To be advised  
**Furnished**

Additional tenant charges apply (fees apply to non-AST tenancies only)  
Tenancy Agreement Fee: £300  
References per Tenant/Guarantor: £60  
Inventory check (approx. £100 – £250 inc. VAT)  
[chestertons.com/property-to-rent/applicable-fees](https://www.chestertons.com/property-to-rent/applicable-fees)

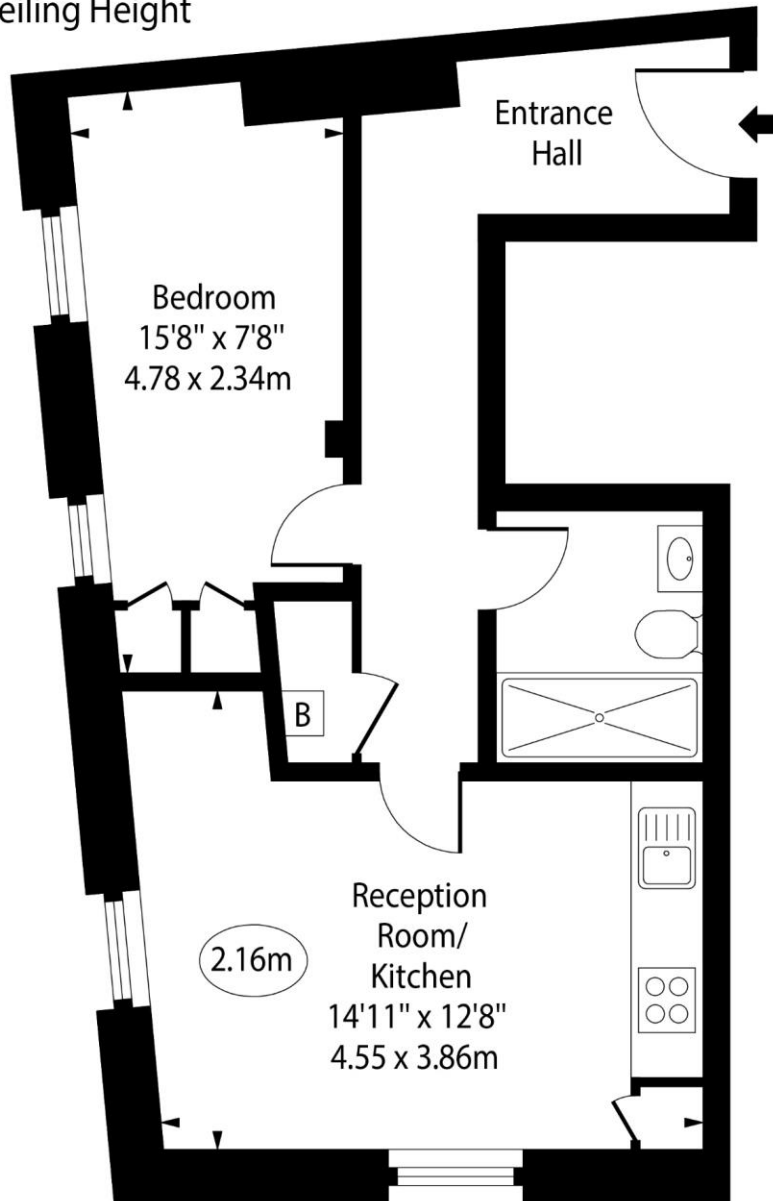
| Energy Efficiency Rating                          |         |           |
|---|---------|-----------|
|   | Current | Potential |
| Very energy efficient - lower running costs       |         |           |
| (94-100) <b>A</b>                                 |         |           |
| (81-93) <b>B</b>                                  |         |           |
| (69-80) <b>C</b>                                  | 77      | 77        |
| (55-68) <b>D</b>                                  |         |           |
| (39-54) <b>E</b>                                  |         |           |
| (21-38) <b>F</b>                                  |         |           |
| (1-20) <b>G</b>                                   |         |           |
| Not energy efficient - higher running costs       |         |           |
| England, Scotland & Wales EU Directive 2002/91/EC |         |           |

### *Chestertons Tower Bridge Lettings*

220 Tower Bridge Road  
Tower Bridge  
London  
SE1 2UP  
[lettings.towerbridge@chestertons.com](mailto:lettings.towerbridge@chestertons.com)  
02073576911  
[chestertons.com](https://www.chestertons.com)

# Denmark Road, SE5

○ - Ceiling Height



Second Floor

Approx Gross Internal Area      446 Sq Ft - 41.43 Sq M

For Illustration Purposes Only - Not To Scale

[www.goldlens.co.uk](http://www.goldlens.co.uk)

Ref. No. 017479K

