



New Crane Place

London, E1W

£2,700 per month
(£623.08 per week)

A fantastic two bedroom apartment with two bathrooms set within this cobbled courtyard in the heart of Wapping. This spacious apartment has exceptionally high ceilings throughout and spans 1174 sq. ft. Further benefits are parking and porter

CHESTERTONS



New Crane Place

London, E1W

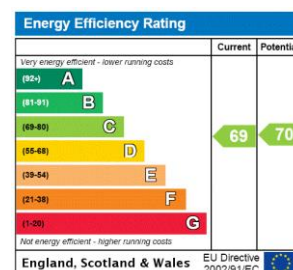
- Two Bedrooms
- Two Bathrooms
- Porter
- Underground Parking
- Near to Station



A fantastic two bedroom apartment with two bathrooms set within this cobbled courtyard in the heart of Wapping. This spacious apartment has exceptionally high ceilings throughout and spans 1174 sq. ft. The property further benefits from secure underground parking space and porter.

Wapping is a unique tranquil setting along the north side of the river Thames. The City is within walking distance and there are numerous transport links providing fantastic connectivity across London via Wapping, Tower Hill & Tower Gateway stations. The area is home to St Katharine Docks which is central London's only marina, boasting an array of bars and restaurants as well as a large Waitrose

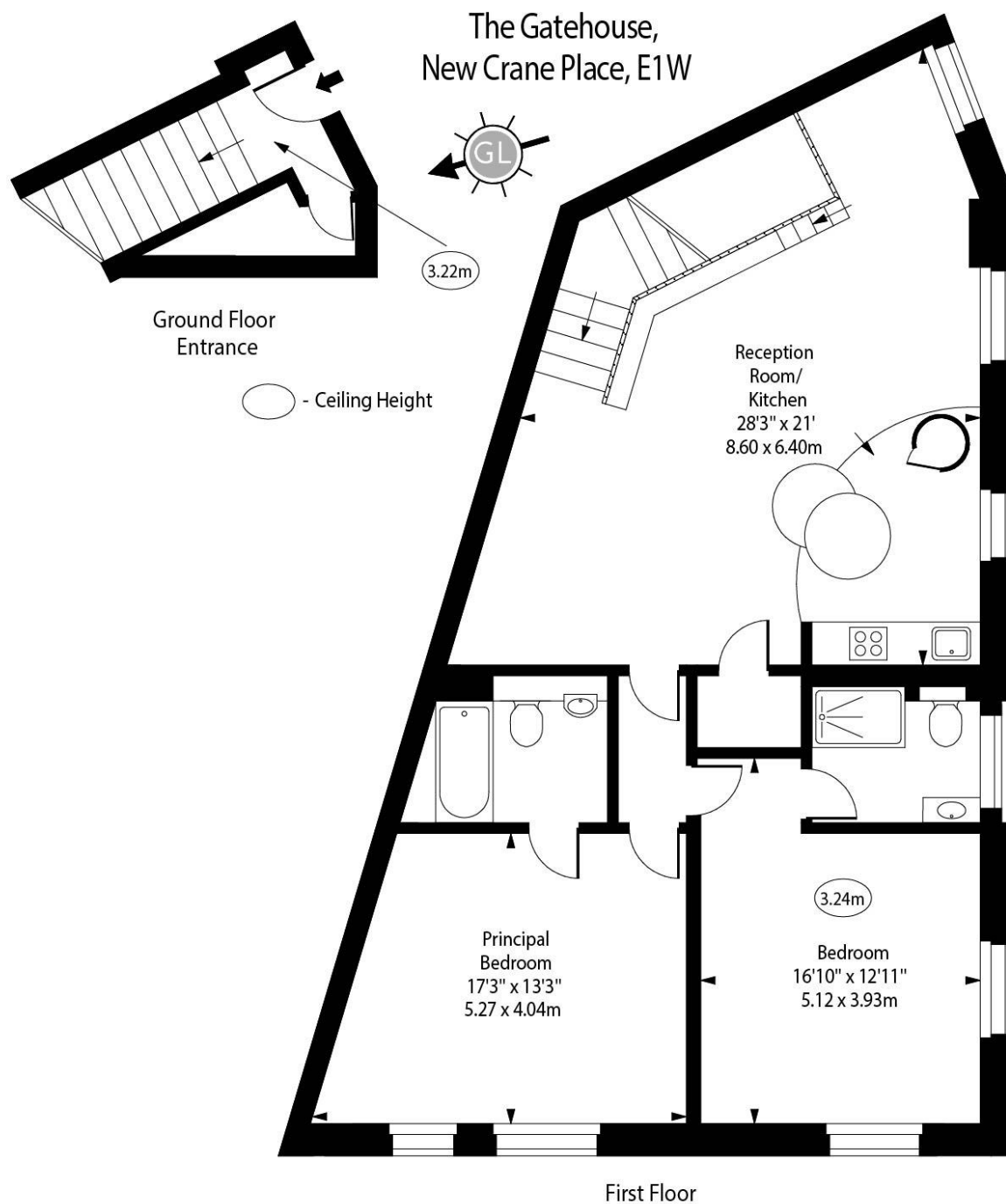
Minimum Term: 12 months
Deposit Required: £3,115.38
Local Authority: Tower Hamlets
Council Tax Band: D
EPC Rating: C
Furnished



Chestertons Tower Bridge Lettings

220 Tower Bridge Road
 Tower Bridge
 London
 SE1 2UP
towerbridgelettingsusers@chestertons.co.uk
 02073576911
chestertons.co.uk

Additional tenant charges apply (fees apply to non-AST tenancies only)
 Tenancy Agreement Fee: £300
 References per Tenant/Guarantor: £60
 Inventory check (approx. £100 – £250 inc. VAT)
chestertons.co.uk/property-to-rent/applicable-fees



Approx Gross Internal Area 1174 Sq Ft - 109.06 Sq M

For Illustration Purposes Only - Not To Scale

www.goldlens.co.uk

Ref. No. 021816MS