



Crosby Row

London, SE1

£2,750 per month
(£634.62 per week)

A bright top floor split level 3 double bedroom apartment. The property is well proportioned and benefits from a private balcony. The apartment is ideally located for London Bridge station and the array of bars and restaurants that the area offers.

CHESTERTONS



Crosby Row

London, SE1

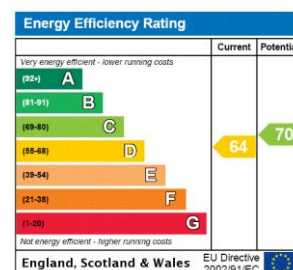
- Excellent Location Close To London Bridge
- 3 Double Bedrooms
- Split Level Apartment
- Balcony



A bright split level top floor 3 double bedroom apartment. The property is well proportioned and benefits from a spacious reception room, separate kitchen and private balcony. The apartment is ideally located for London Bridge station and the array of bars and restaurants that the area offers.

The area is home to London's most iconic landmark, Tower Bridge and is within the vicinity of many attractions such as The Shard, Tate Modern and Tower of London. Shad Thames boasts a variety of bars and restaurants and is a short walk to the delights of Bermondsey Street, Maltby Street & Borough markets. Although The City is within walking distance the area is well connected with excellent transport

Minimum Term: 12 months
Deposit Required: £3,173.08
Local Authority: London Borough of Southwark
Council Tax Band: C
EPC Rating: C
Furnished

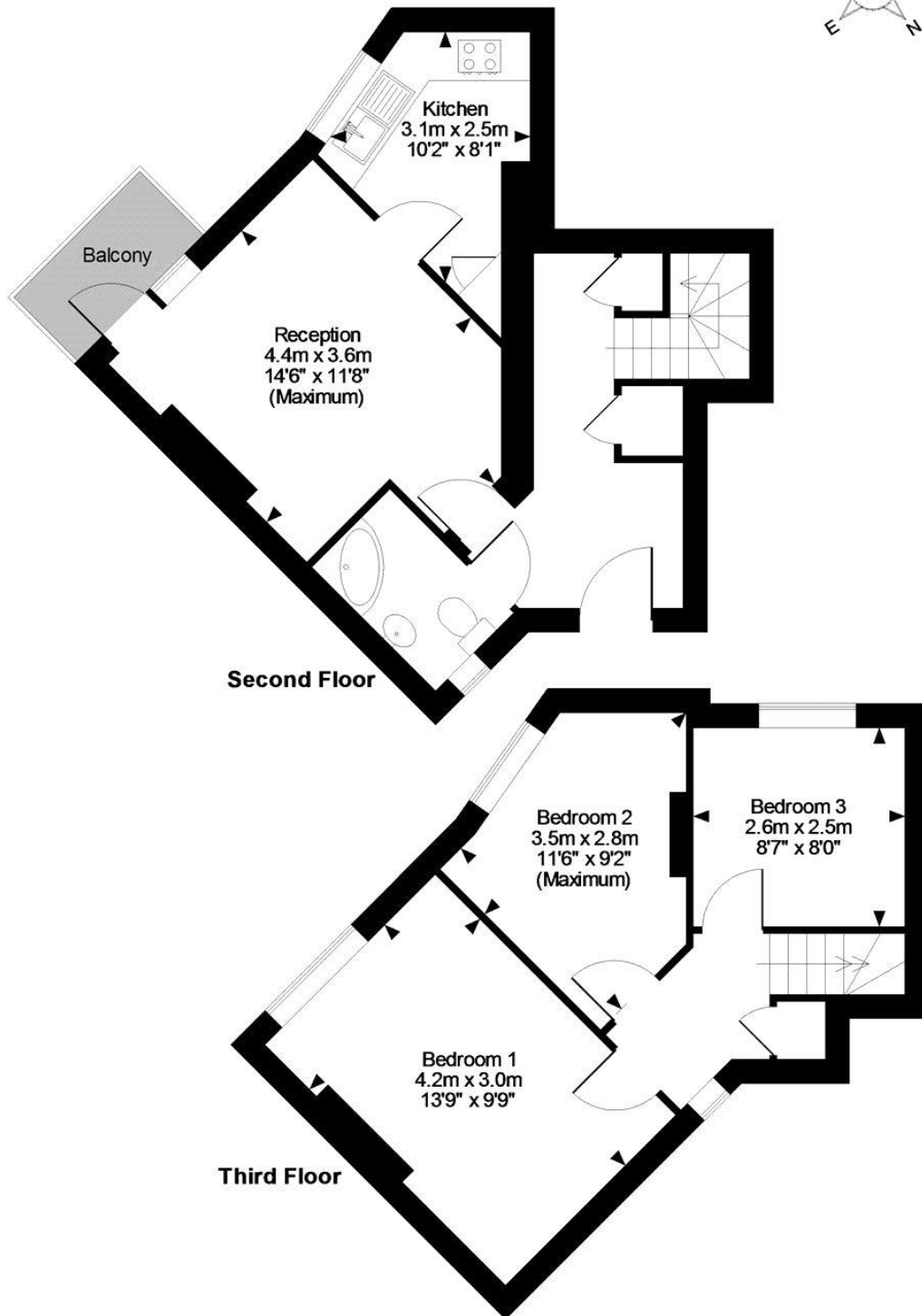
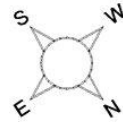


Chestertons Tower Bridge Lettings

220 Tower Bridge Road
 Tower Bridge
 London
 SE1 2UP
towerbridgelettingsusers@chestertons.co.uk
 02073576911
chestertons.co.uk

Additional tenant charges apply (fees apply to non-AST tenancies only)
 Tenancy Agreement Fee: £300
 References per Tenant/Guarantor: £60
 Inventory check (approx. £100 – £250 inc. VAT)
chestertons.co.uk/property-to-rent/applicable-fees

Crosby Row, SE1
Approximate Gross Internal Area
724 Sq Ft/67 Sq M



FOR ILLUSTRATIVE PURPOSES ONLY - NOT TO SCALE

The position & size of doors, windows, appliances and other features are approximate only.

© ehouse. Unauthorised reproduction prohibited. Drawing ref. dig/8200165/TML

