



The Circle

Queen Elizabeth Street, SE1

£2,400 per month
(£553.85 per week)

A beautiful and bright one bedroom apartment benefiting from an amazing balcony, bedroom with fitted wardrobes, 24 hour concierge.

CHESTERTONS



The Circle

Queen Elizabeth Street, SE1

•



A beautiful and bright one bedroom apartment benefiting from an amazing balcony. The apartment is arranged within this popular Shad Thames development with 24 concierge and is offered in immaculate condition throughout. Comprising, light living room with doors to large balcony, semi open plan kitchen, double bedroom with fitted wardrobe and bathroom.

Shad Thames is a unique area steeped in history and character situated along the south side of the River Thames. The area is home to London's most iconic landmark, Tower Bridge and is within the vicinity of many attractions such as The Shard, Tate Modern and Tower of London. Shad Thames boasts a variety of bars and

| | |
|--------------------------|------------------------------------|
| Minimum Term: | 12 months |
| Deposit Required: | £0.00 |
| Local Authority: | London Borough of Southwark |
| Council Tax Band: | D |
| EPC Rating: | B |

Chestertons Tower Bridge Lettings

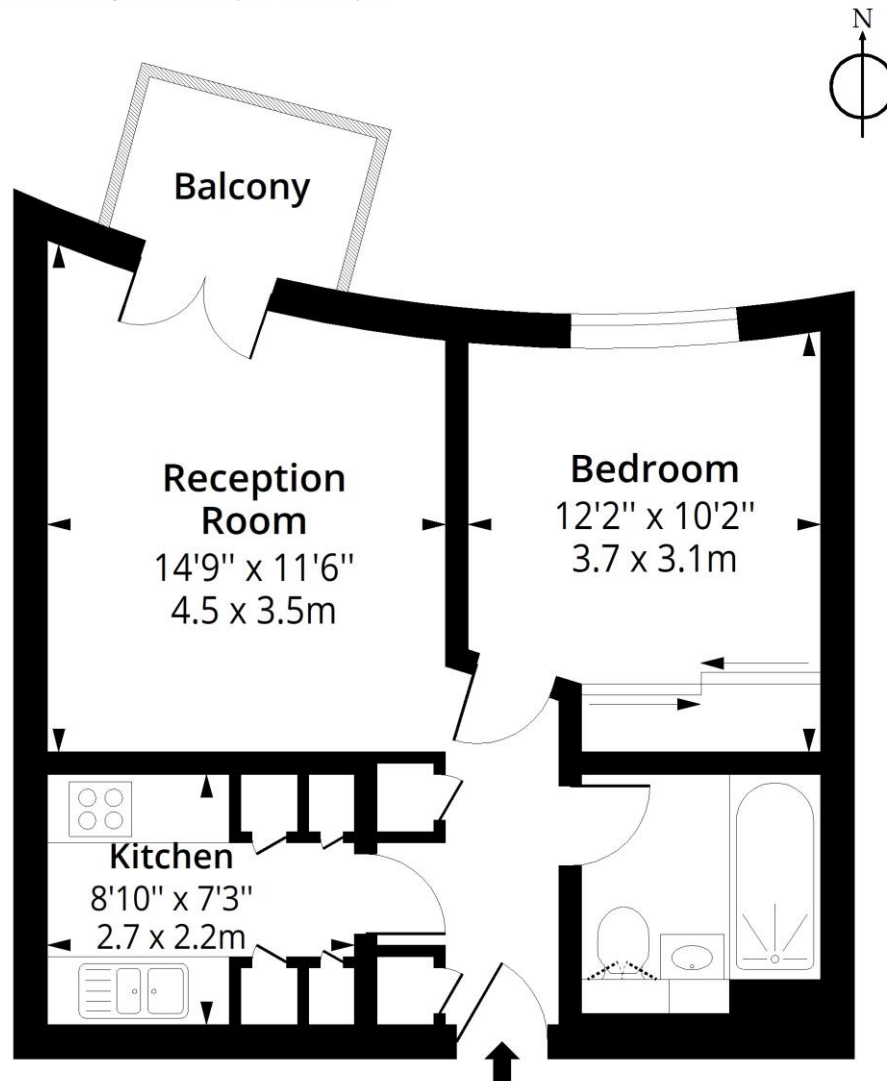
220 Tower Bridge Road
Tower Bridge
London
SE1 2UP
towerbridgelettingsusers@chestertons.co.uk
02073576911
chestertons.co.uk

Additional tenant charges apply (fees apply to non-AST tenancies only)
Tenancy Agreement Fee: £300
References per Tenant/Guarantor: £60
Inventory check (approx. £100 – £250 inc. VAT)
[chestertons.co.uk/property-to-rent/applicable-fees](https://www.chestertons.co.uk/property-to-rent/applicable-fees)

The circle, Queen Elizabeth, SE1

Approx. Gross Internal Area 453 Sq Ft - 42.08 Sq M

Approx. Gross Balcony Area 31 Sq Ft - 2.88 Sq M



Third Floor

Floor Area 453 Sq Ft - 42.08 Sq M



Measured according to RICS IPMS2. Floor plan is for illustrative purposes only and is not to scale. Every attempt has been made to ensure the accuracy of the floor plan shown, however all measurements, fixtures, fittings and data shown are an approximate interpretation for illustrative purposes only. 1 sq m = 10.76 sq feet.

lpaplus.com

Date: 5/7/2023

