



Cornwall Street

London, E1

£3,250 per month
(£750 per week)

A superb three bedroom, two bathroom modern apartment that has recently been refurbished. The apartment is situated in this excellent location next to Shadwell train station.



Cornwall Street

London, E1

- THREE BEDROOM
- FURNISHED
- MODERN
- TWO BATHROOM



A superb three bedroom, two bathroom modern apartment that has recently been refurbished. The apartment is situated in this excellent location next to Shadwell train station.

Minimum Term: 12 months
Deposit Required: £3,750.00
Local Authority: Tower Hamlets
Council Tax Band: D
EPC Rating: B
Furnished

Energy Efficiency Rating		
	Current	Potential
Very energy efficient - lower running costs		
A (91-100)		
B (81-90)	83	83
C (69-80)		
D (55-68)		
E (39-54)		
F (21-38)		
G (1-20)		
Not energy efficient - higher running costs		
England, Scotland & Wales EU Directive 2002/91/EC		

Chestertons Tower Bridge Lettings

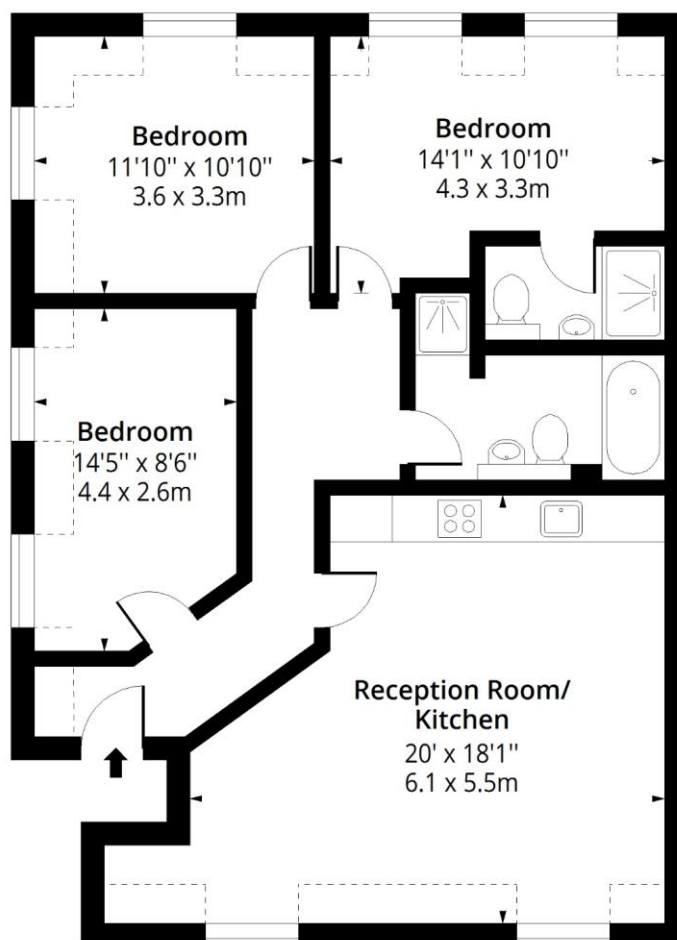
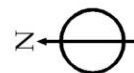
220 Tower Bridge Road
 Tower Bridge
 London
 SE1 2UP
 towerbridge@chestertons.co.uk
 02073576911
 chestertons.co.uk

Additional tenant charges apply (fees apply to non-AST tenancies only)
 Tenancy Agreement Fee: £300
 References per Tenant/Guarantor: £60
 Inventory check (approx. £100 – £250 inc. VAT)
[chestertons.co.uk/property-to-rent/applicable-fees](https://www.chestertons.co.uk/property-to-rent/applicable-fees)

Cornwall Street, E1

Approx. Gross Internal Area 878 Sq Ft - 81.57 Sq M

Approx. Gross Reduced Height Under 1.5m Area 76 Sq Ft - 7.06 Sq M



Second Floor

Floor Area 878 Sq Ft - 81.57 Sq M



Measured according to RICS IPMS2. Floor plan is for illustrative purposes only and is not to scale. Every attempt has been made to ensure the accuracy of the floor plan shown, however all measurements, fixtures, fittings and data shown are an approximate interpretation for illustrative purposes only. 1 sq m = 10.76 sq feet.

lpaplus.com

Date: 7/12/2022



This paper is
100% recyclable