



# Walton Heights

143 Walworth Road, SE17

£2,850 per month  
(£657.69 per week)

An immaculate two double bedroom, two bathroom apartment set within this popular new development in Elephant and Castle.

CHESTERTONS





# Walton Heights

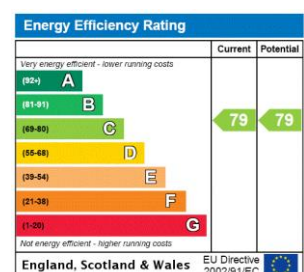
143 Walworth Road, SE17

- TWO BEDROOM
- TWO BATHROOM
- MODERN
- LIFT
- CONCIERGE



A two bedroom third floor apartment set in the impressive Elephant Park development which is located amongst all the many amenities of Elephant and Castle. The apartment comprises an open plan kitchen/ living room opening on to a generously sized private balcony, a master bedroom with an en-suite shower room and a further double bedroom with bathroom.

**Minimum Term:** 12 months  
**Deposit Required:** £3,288.46  
**Local Authority:** London Borough Of Southwark (Council Tax)  
**Council Tax Band:** E  
**EPC Rating:** C  
**Furnished**



### *Chestertons Tower Bridge Lettings*

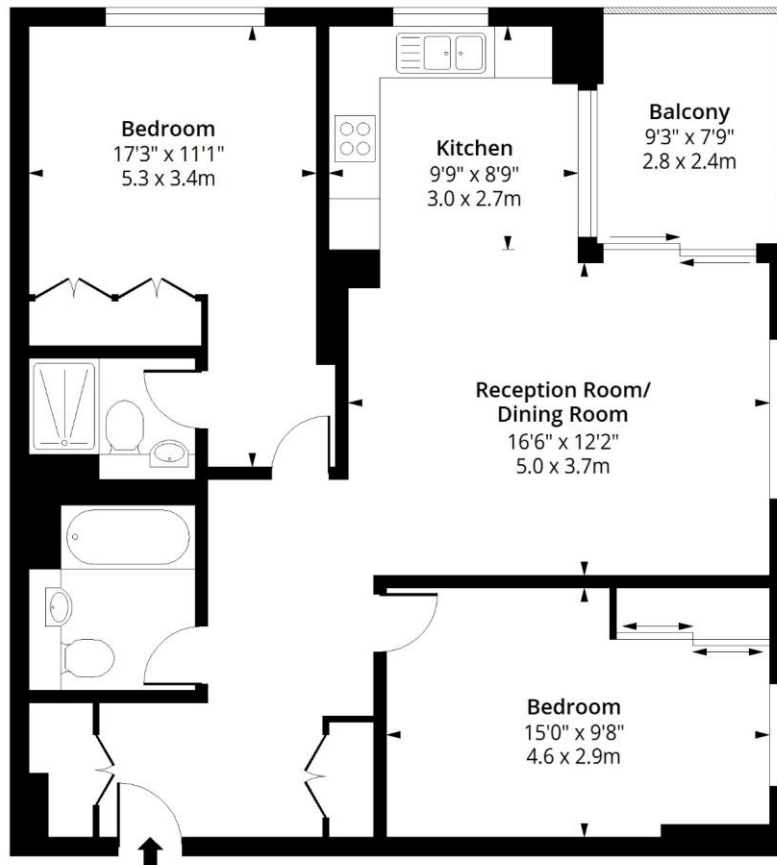
220 Tower Bridge Road  
 Tower Bridge  
 London  
 SE1 2UP  
[lettings.towerbridge@chestertons.co.uk](mailto:lettings.towerbridge@chestertons.co.uk)  
 02073576911  
[chestertons.co.uk](http://chestertons.co.uk)

Additional tenant charges apply (fees apply to non-AST tenancies only)  
 Tenancy Agreement Fee: £300  
 References per Tenant/Guarantor: £60  
 Inventory check (approx. £100 – £250 inc. VAT)  
[chestertons.co.uk/property-to-rent/applicable-fees](http://chestertons.co.uk/property-to-rent/applicable-fees)



# Walton Heights, SE17

Approx. Gross Internal Area 851 Sq Ft - 79.06 Sq M  
Approx. Gross Balcony Area 65 Sq Ft - 6.04 Sq M



## Third Floor

Floor Area 851 Sq Ft - 79.06 Sq M



Measured according to RICS IPMS2. Floor plan is for illustrative purposes only and is not to scale. Every attempt has been made to ensure the accuracy of the floor plan shown, however all measurements, fixtures, fittings and data shown are an approximate interpretation for illustrative purposes only. 1 sq m = 10.76 sq feet.

lpaplus.com

Date: 17/2/2023



This paper is  
100% recyclable