



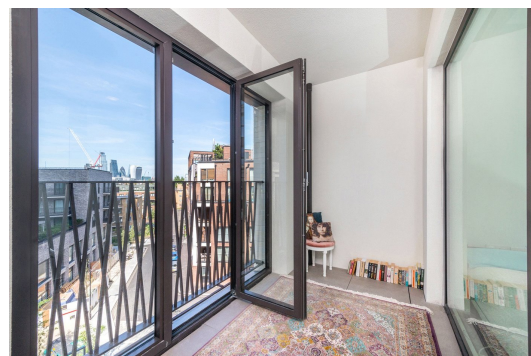
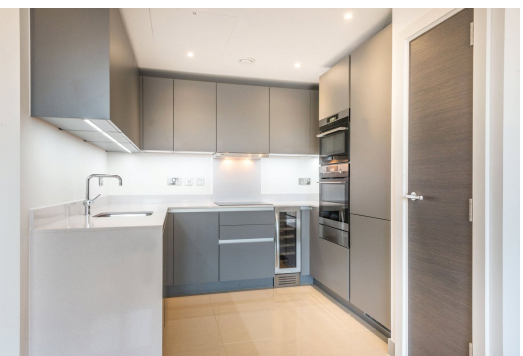
Blackfriars Circus

London, SE1

£550 per week
(£2,383.33 pcm)

A beautiful one bedroom apartment in newly constructed Barratt development, Blackfriars Circle. This spacious apartment is arranged over approximately 642 sq. ft and boasts bright reception room, contemporary bathroom, modern open plan kitchen, a large double bedroom and a winter garden. Residents also have the benefit of an onsite gym and concierge.

CHESTERTONS



St. Georges Circus

London, SE1

- Large One Bedroom Apartment
- Winter Garden
- New Build
- Gym
- Concierge



Conveniently located for many transport links being equidistant of Elephant and Castle (Northern and Bakerloo), Lambeth North (Northern) and Southwark (Jubilee) Underground Station.

Tenure: To be advised

Furnished

Additional tenant charges apply (fees apply to non-AST tenancies only)

Tenancy Agreement Fee: £300

References per Tenant/Guarantor: £60

Inventory check (approx. £100 – £250 inc. VAT)

[chestertons.com/property-to-rent/applicable-fees](https://www.chestertons.com/property-to-rent/applicable-fees)

Chestertons Tower Bridge Lettings

220 Tower Bridge Road

Tower Bridge

London

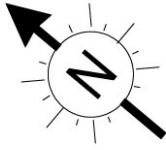
SE1 2UP

lettings.towerbridge@chestertons.com

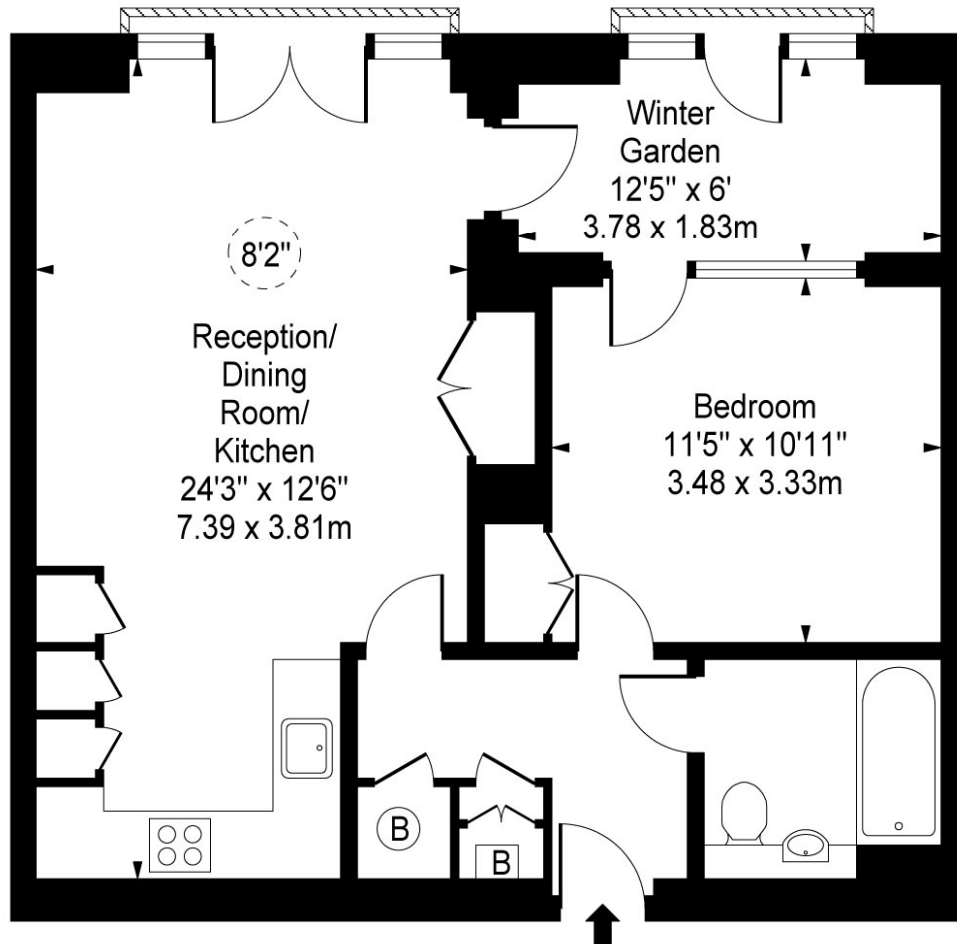
02073576911

[chestertons.com](https://www.chestertons.com)

Delphini Apartments, St. Georges Circus, SE1



 - Ceiling Height



Third Floor

Approx Gross Internal Area 642 Sq Ft - 59.64 Sq M
(Including Winter Garden Area)

For Illustration Purposes Only - Not To Scale

www.goldlens.co.uk

Ref. No. 010360M