



Butlers & Colonial Wharf

London, SE1

£2,200 pcm

Video Viewing Available A charming one bedroom apartment set within a gated warehouse development in Shad Thames. This superb apartment features exposed beams and huge window offering views of Tower Bridge. EPC Rating D

CHESTERTONS



Butlers & Colonial Wharf

London, SE1

- Warehouse Apartment
- Shad Thames
- Loft Style One Bedroom
- Wooden Floors
- Exposed Brickwork & Beams
- Concierge
- Secure Gated Development



A superb top floor one bedroom apartment set in this private converted warehouse boasting wonderful characteristics such as exposed beam work and wood flooring throughout. The property comprises a spacious open plan reception/dining area with kitchen, master bedroom with good storage and bathroom. Secure parking and concierge.

Shad Thames is a unique area steeped in history and character situated along the south side of the River Thames. The area is home to London's most iconic landmark, Tower Bridge and is within the vicinity of many attractions such as The Shard, Tate Modern and Tower of London. Shad Thames boasts a variety of bars and restaurants and is a short walk to the delights of Bermondsey Street, Maltby Street & Borough markets. Although The City is within walking distance the area is well connected with excellent transport links via London Bridge & Tower Hill stations as-well as the river taxi.

Tenure: To be advised

Furnished

Additional tenant charges apply (fees apply to non-AST tenancies only)
 Tenancy Agreement Fee: £300
 References per Tenant/Guarantor: £60
 Inventory check (approx. £100 – £250 inc. VAT)
[chestertons.com/property-to-rent/applicable-fees](https://www.chestertons.com/property-to-rent/applicable-fees)

Energy Efficiency Rating		
	Current	Potential
Very energy efficient - lower running costs		
(92+) A		
(81-91) B		
(69-80) C		
(55-68) D		
(39-54) E	55	57
(21-38) F		
(1-20) G		
Not energy efficient - higher running costs		
England, Scotland & Wales		EU Directive 2002/91/EC

Chestertons Tower Bridge Lettings

220 Tower Bridge Road

Tower Bridge

London

SE1 2UP

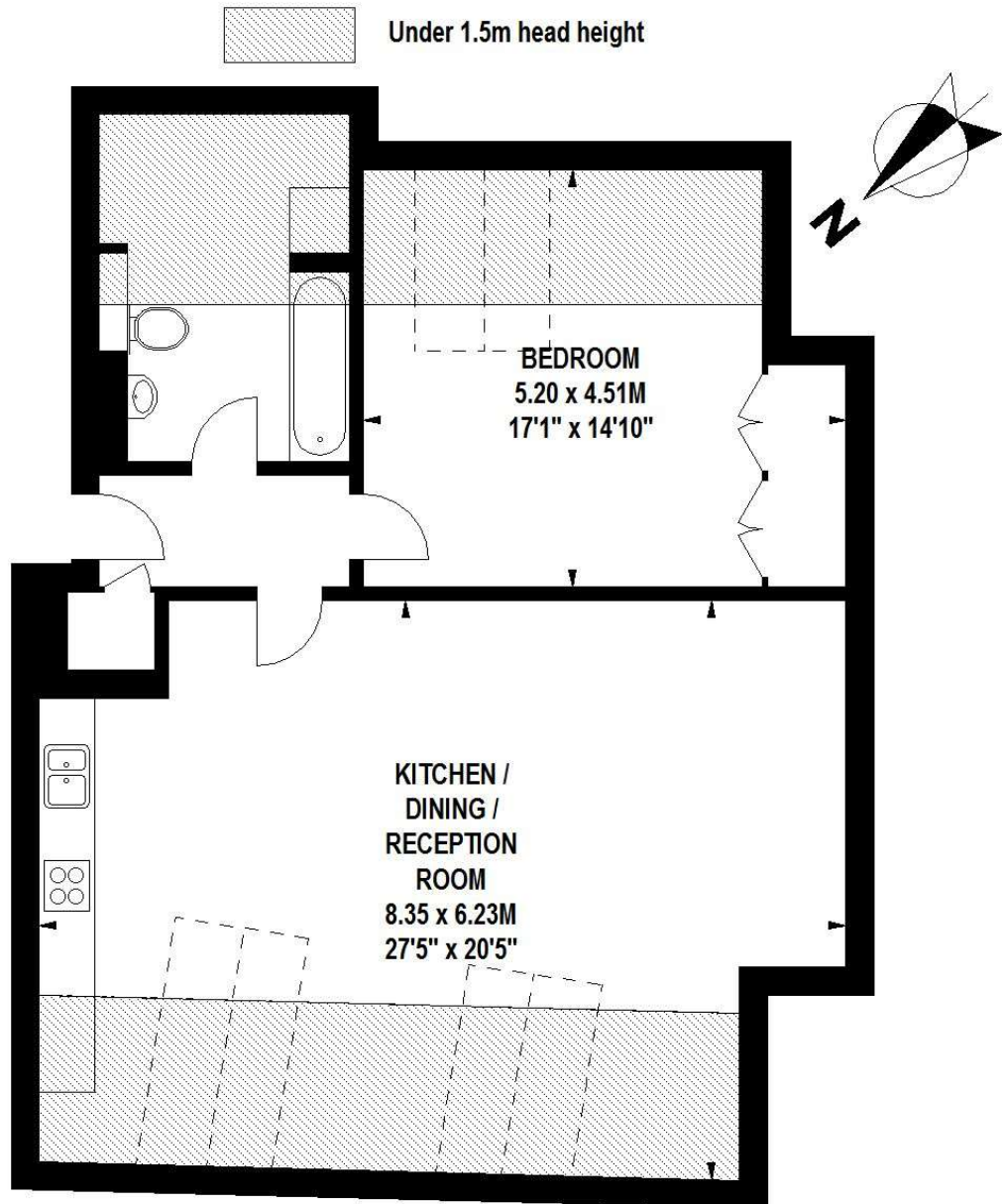
lettings.towerbridge@chestertons.com

02073576911

[chestertons.com](https://www.chestertons.com)

Butlers & Colonial Wharf, SE1

Approximate Gross Internal Area 87 sq m / 936 sq ft



Fifth Floor

Floor Plan produced for Chestertons by Mays Floorplans © . Tel 020 3397 4594

Illustration for identification purposes only, not to scale

All measurements are maximum, and include wardrobes and window bays where applicable