



# Antonine Heights

## City Walk, SE1

£3,100 per month  
(£715.38 per week)

A spacious two double bedroom, two bathroom apartment with large balcony set on the 10th floor of this popular development and offering spectacular views of the city.

CHESTERTONS





# Antonine Heights

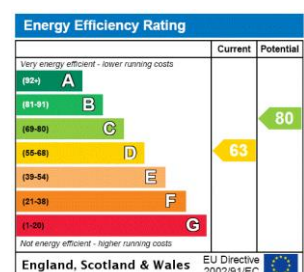
## City Walk, SE1

- Spacious 2 Bedroom Apartment
- 2 Bathrooms
- Balcony 10th Floor
- Views of the city
- Excellent London Bridge Location



A spacious two double bedroom, two bathroom apartment with large balcony set on the 10th floor of this popular development and offering spectacular views of the city. This lateral apartment spans approx.912 sq ft and boasts a bright open living room / kitchen, master bedroom with ensuite shower room, further double bedroom and principal bathroom. The property is ideally located for London Bridge station, the array of bars, coffee shops and restaurant's on the fashionable Bermondsey Street, Borough market and Maltby Street weekend market.

**Minimum Term:** months  
**Deposit Required:** £3,576.92  
**Local Authority:** London Borough of Southwark (Council Tax)  
**Council Tax Band:** E  
**EPC Rating:** D  
**Part Furnished, Unfurnished**

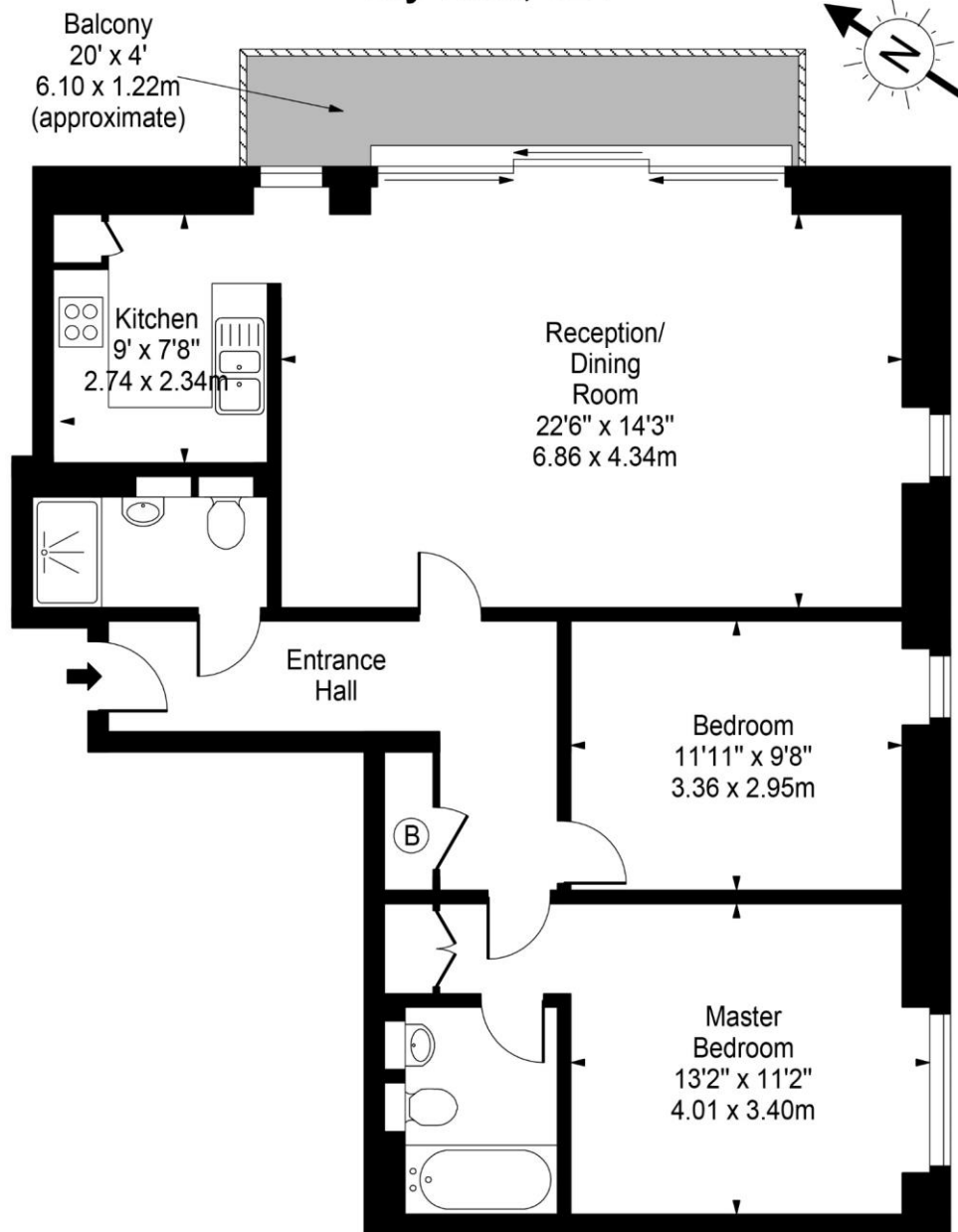


### Chestertons Tower Bridge Lettings

220 Tower Bridge Road  
 Tower Bridge  
 London  
 SE1 2UP  
[lettings.towerbridge@chestertons.co.uk](mailto:lettings.towerbridge@chestertons.co.uk)  
 02073576911  
[chestertons.co.uk](http://chestertons.co.uk)

Additional tenant charges apply (fees apply to non-AST tenancies only)  
 Tenancy Agreement Fee: £300  
 References per Tenant/Guarantor: £60  
 Inventory check (approx. £100 – £250 inc. VAT)  
[chestertons.co.uk/property-to-rent/applicable-fees](http://chestertons.co.uk/property-to-rent/applicable-fees)

# Antonine Heights, City Walk, SE1



Tenth Floor

Approx Gross Internal Area **912 Sq Ft - 84.72 Sq M**

For Illustration Purposes Only - Not To Scale

[www.goldlens.co.uk](http://www.goldlens.co.uk)

Ref. No. 011657T

