

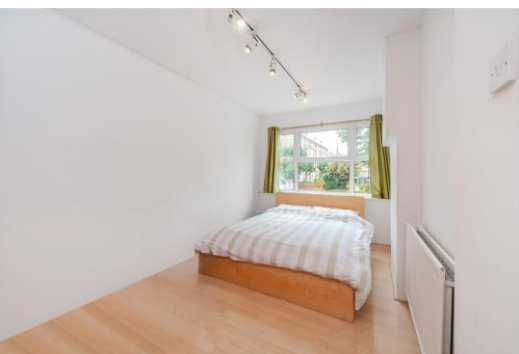


Keats Close

London, SE1

£4,996 per month
(£1,152.92 per week)

A modern house situated at the end of this cul-de-sac close to Old Kent Road. Accommodation arranged over three floors comprising: open plan reception/kitchen, 5 bedrooms, 2 bathrooms, separate WC, garden and off street parking.



Keats Close

London, SE1

- 4/5 Bedroom House
- Open plan kitchen reception
- Potential 2nd reception area (4 bedroom)
- New double glazing
- Two bathrooms (one ensuite)
- Garden
- Furnished
- EPC rating C



A modern house situated at the end of this cul-de-sac close to Old Kent Road. Accommodation arranged over three floors comprising: open plan reception/kitchen, 5 bedrooms, 2 bathrooms, separate WC, garden and off street parking.

Keats Close is a quiet residential development moments away from Old Kent Road and Burgess Park. In very close proximity there are numerous bus routes providing easy connection to Elephant & Castle and Bermondsey underground stations as well as direct routes into Central London.

Minimum Term: months
Deposit Required: £5,764.62
Local Authority: Southwark Council
Council Tax Band: E
EPC Rating: C
Furnished

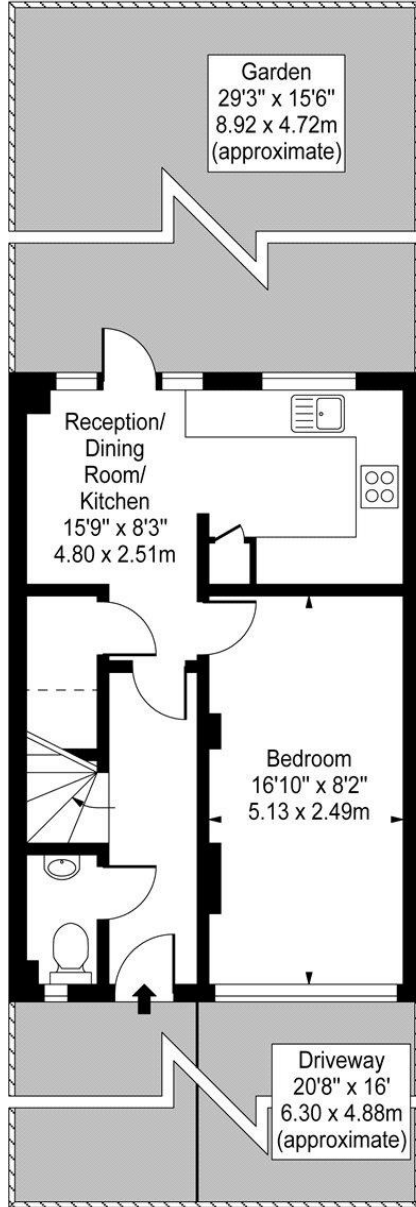
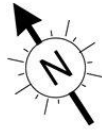
Energy Efficiency Rating		
	Current	Potential
Very energy efficient - lower running costs		
A (92-100)		
B (81-91)		86
C (69-80)	74	
D (55-68)		
E (39-54)		
F (21-38)		
G (1-20)		
Not energy efficient - higher running costs		
England, Scotland & Wales EU Directive 2002/91/EC		

Chestertons Tower Bridge Lettings

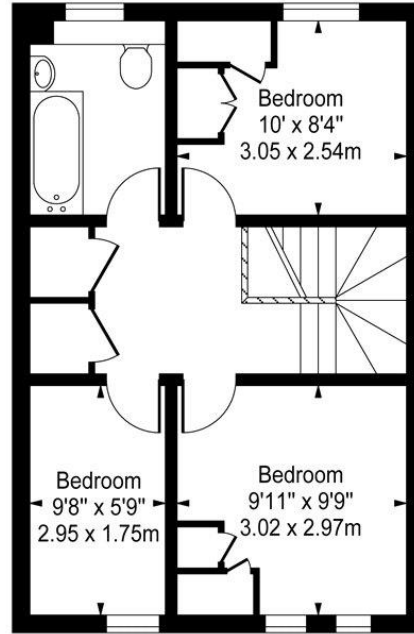
220 Tower Bridge Road
 Tower Bridge
 London
 SE1 2UP
 towerbridge@chestertons.co.uk
 02073576911
 chestertons.co.uk

Additional tenant charges apply (fees apply to non-AST tenancies only)
 Tenancy Agreement Fee: £300
 References per Tenant/Guarantor: £60
 Inventory check (approx. £100 – £250 inc. VAT)
 chestertons.co.uk/property-to-rent/applicable-fees

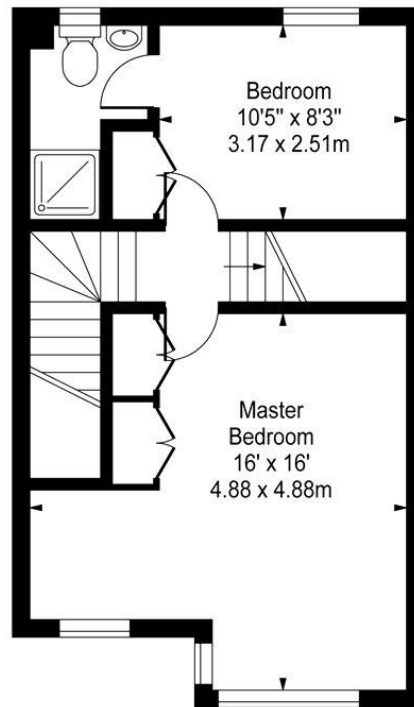
Keats Close, SE1



Ground Floor



Second Floor



First Floor

Approx Gross Internal Area 1236 Sq Ft - 114.82 Sq M

For Illustration Purposes Only - Not To Scale

www.goldlens.co.uk

Ref. No. 008326N

