



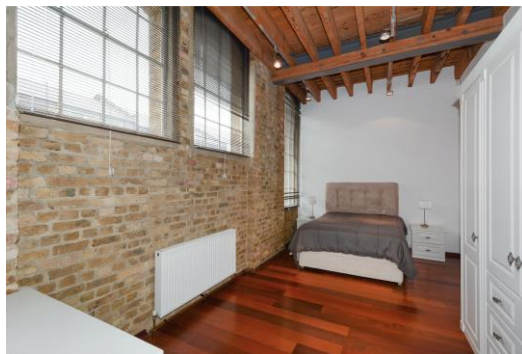
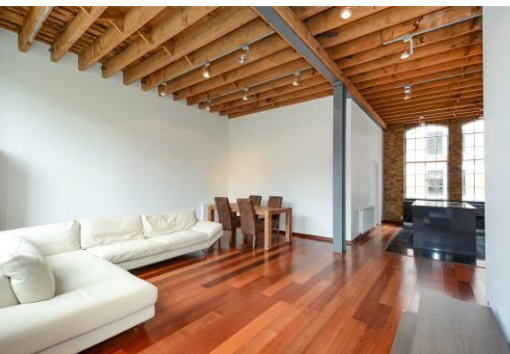
The Flag Store

23 Queen Elizabeth Street, SE1

£4,250 per month
(£980.77 per week)

An amazing warehouse conversion with high ceilings, exposed brickwork and beams. The property comprises 2 double bedroom, two bathroom, open plan kitchen and living space.

CHESTERTONS



The Flag Store

23 Queen Elizabeth Street, SE1

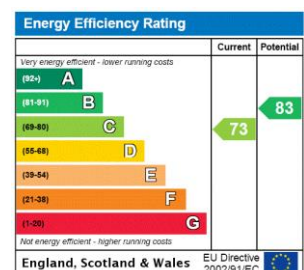
- WAREHOUSE CONVERSION
- TWO BEDROOMS
- TWO BATHROOMS
- FURNISHED



An amazing warehouse conversion with high ceilings, exposed brickwork and beams. The property comprises 2 double bedroom, two bathroom, open plan kitchen and living space.

Shad Thames is a unique area steeped in history and character situated along the south side of the River Thames. The area is home to London's most iconic landmark, Tower Bridge and is within the vicinity of many attractions such as The Shard, Tate Modern and Tower of London. Shad Thames boasts a variety of bars and restaurants and is a short walk to the delights of Bermondsey Street, Maltby Street & Borough markets. Although The City is within walking distance the area is well connected with excellent transport links via London Bridge & Tower Hill stations as well as the river taxi.

Minimum Term: 12 months
Deposit Required: £4,903.85
Local Authority: London Borough of Southwark
Council Tax Band: G
EPC Rating: C
Furnished



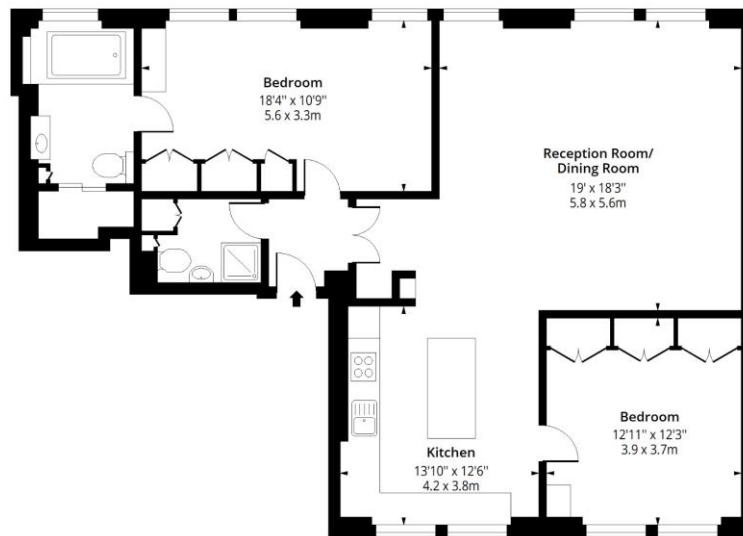
Chestertons Tower Bridge Lettings

220 Tower Bridge Road
 Tower Bridge
 London
 SE1 2UP
towerbridgelettingsusers@chestertons.co.uk
 02073576911
chestertons.co.uk

Additional tenant charges apply (fees apply to non-AST tenancies only)
 Tenancy Agreement Fee: £300
 References per Tenant/Guarantor: £60
 Inventory check (approx. £100 – £250 inc. VAT)
chestertons.co.uk/property-to-rent/applicable-fees

The Flag Store, SE1

Approx. Gross Internal Area 1093 Sq Ft - 101.54 Sq M



First Floor

Floor Area 1093 Sq Ft - 101.54 Sq M



Measured according to RICS IPMS2. Floor plan is for illustrative purposes only and is not to scale. Every attempt has been made to ensure the accuracy of the floor plan shown, however all measurements, fixtures, fittings and data shown are an approximate interpretation for illustrative purposes only. 1 sq m = 10.76 sq feet.

lpaplus.com

Date: 11/7/2023



This paper is
100% recyclable