



# Hurlock Heights

4 Deacon Street, SE17

£2,750 per month  
(£634.62 per week)

A stylish one bedroom apartment set within this extremely popular modern development, Elephant Park, which benefits from residents gym, communal gardens, secure cycle storage and 24 concierge service.



# Hurlock Heights

4 Deacon Street, SE17

- One Bedroom
- Contemporary apartment
- Elephant Park
- 24 Hour Concierge
- Gym
- Cycle storage





A stylish one bedroom apartment set within this extremely popular modern development, Elephant Park, which benefits from residents gym, communal gardens, secure cycle storage and 24 concierge service.

This contemporary apartment spans approx. 643 sq.ft, is offered furnished and is available now.

**Minimum Term:** 12 months  
**Deposit Required:** £3,173.08  
**Local Authority:** London Borough of Southwark  
**Council Tax Band:** D  
**EPC Rating:** B  
**Furnished**

Energy Efficiency Rating		
	Current	Potential
Very energy efficient - lower running costs		
<b>A</b> (92-100)		
<b>B</b> (81-91)	81	81
<b>C</b> (69-80)		
<b>D</b> (55-68)		
<b>E</b> (39-54)		
<b>F</b> (21-38)		
<b>G</b> (1-20)		
Not energy efficient - higher running costs		
England, Scotland & Wales		EU Directive 2002/91/EC

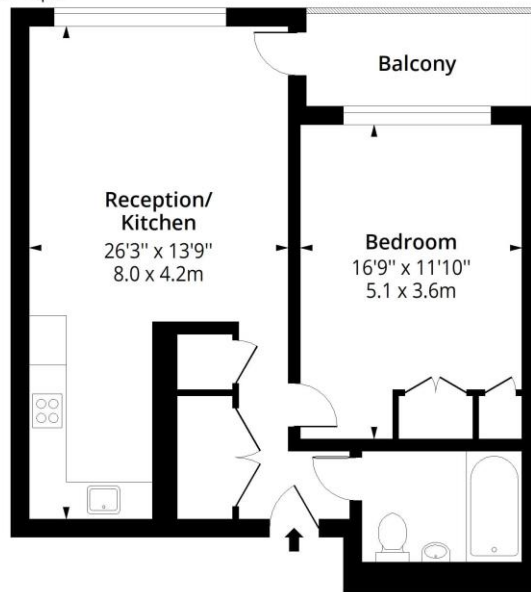
### Chestertons Tower Bridge Lettings

220 Tower Bridge Road  
 Tower Bridge  
 London  
 SE1 2UP  
 towerbridge@chestertons.co.uk  
 02073576911  
 chestertons.co.uk

Additional tenant charges apply (fees apply to non-AST tenancies only)  
 Tenancy Agreement Fee: £300  
 References per Tenant/Guarantor: £60  
 Inventory check (approx. £100 – £250 inc. VAT)  
 chestertons.co.uk/property-to-rent/applicable-fees

## Hurlock Heights, SE17

Approx. Gross Internal Area 643 Sq Ft - 59.73 Sq M  
Approx. Gross Balcony Area 60 Sq Ft - 5.57 Sq M



### Second Floor

Floor Area 643 Sq Ft - 59.73 Sq M



Measured according to RICS IPMS2. Floor plan is for illustrative purposes only and is not to scale. Every attempt has been made to ensure the accuracy of the floor plan shown, however all measurements, fixtures, fittings and data shown are an approximate interpretation for illustrative purposes only. 1 sq m = 10.76 sq feet.

lpaplus.com

Date: 9/1/2024



This paper is  
100% recyclable