



Zeno Court

19 Long Walk, SE1

£2,700 per month
(£623.08 per week)

A stylish two-bedroom two bathroom duplex apartment in a modern development moments from the fashionable Bermondsey Street.

CHESTERTONS



Zeno Court

19 Long Walk, SE1

- Two bedrooms
- Two bathrooms
- Balcony
- Open plan kitchen living space
- Modern
- Great location



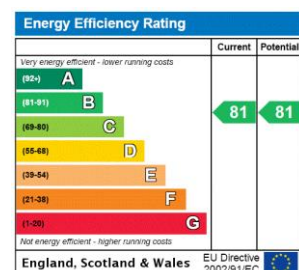
A stylish and beautifully presented two-bedroom duplex apartment on the upper floors of a modern residential development.

On the entrance floor the property boasts a substantial entrance hallway, two double bedrooms, one with an en suite shower room and a family bathroom, tiled and fitted with a three-piece suite. The top floor provides a large reception room with floor to ceiling glass that floods the space with natural light and provides access to a south facing balcony. The semi open plan kitchen is fitted with gloss cabinets and modern appliances.

Zeno Court is ideally located for quick and easy access to Bermondsey Street, Maltby Street market, Tanner Street Park, Shad Thames, Bermondsey Square and Borough Market.

Nearby transport links at London Bridge and Bermondsey Stations provide access for Jubilee and Northern underground lines plus National Rail.

Minimum Term: 12 months
Deposit Required: £3,115.38
Local Authority: London Borough of Southwark
Council Tax Band: E
EPC Rating: B
Furnished

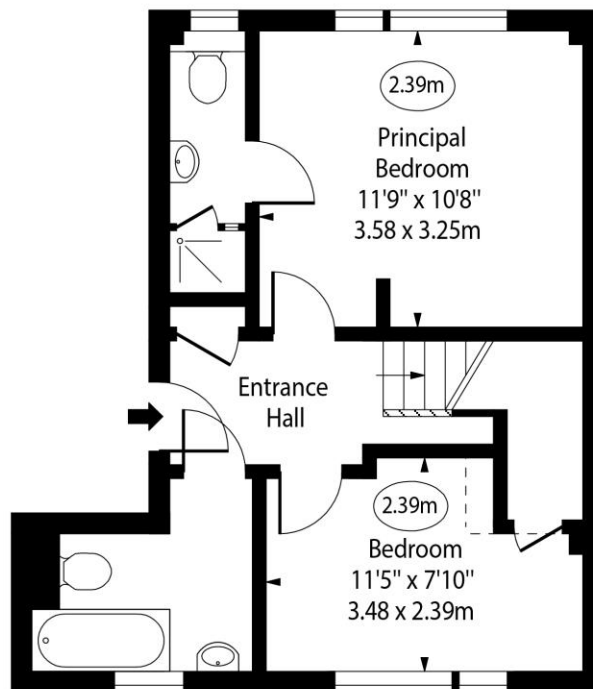
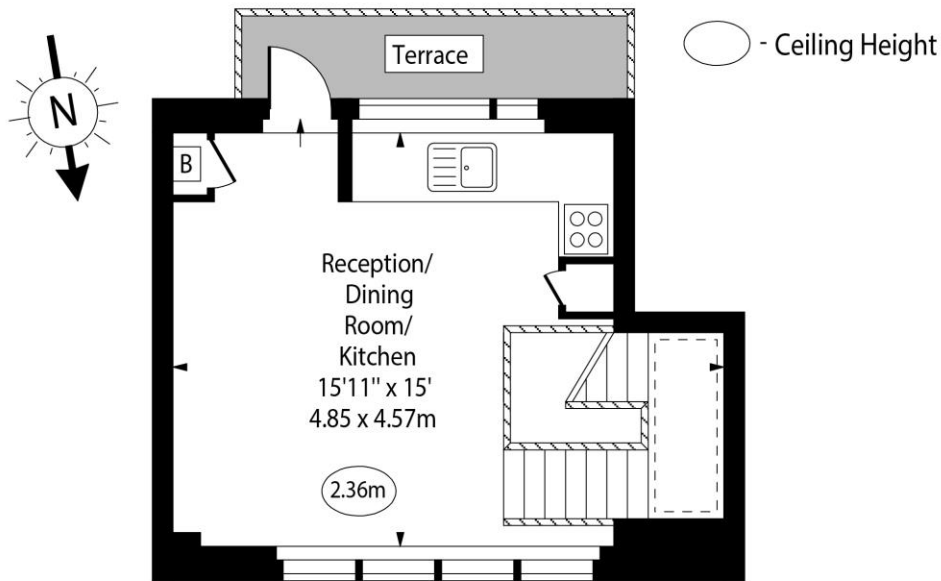


Chestertons Tower Bridge Lettings

220 Tower Bridge Road
 Tower Bridge
 London
 SE1 2UP
 towerbridgelettingsusers@chestertons.co.uk
 02073576911
 chestertons.co.uk

Additional tenant charges apply (fees apply to non-AST tenancies only)
 Tenancy Agreement Fee: £300
 References per Tenant/Guarantor: £60
 Inventory check (approx. £100 – £250 inc. VAT)
 chestertons.co.uk/property-to-rent/applicable-fees

Zeno Court, Long Walk, SE1



Approx Gross Internal Area 729 Sq Ft - 67.72 Sq M

For Illustration Purposes Only - Not To Scale