



Benbow House

24 New Globe Walk, SE1

£3,683.33 per month
(£850.00 per week)

A spacious two bedroom flat with spectacular river views.

The property comprises spacious lounge leading to the large balcony with panoramic city views, two bathrooms, two bedrooms one with walk in wardrobe.



Benbow House

24 New Globe Walk, SE1

- TWO BEDROOMS
- TWO BATHROOMS
- RIVER VIEWS
- LARGE RECEPTION
- FURNISHED



A spacious two bedroom flat with spectacular river views. The property comprises spacious lounge leading to the large balcony with panoramic city views, two bathrooms, two bedrooms one with walk in wardrobe.

Minimum Term: 12 months
Deposit Required: £4,250.00
Local Authority: London Borough of Southwark
Council Tax Band: G
EPC Rating: B
Furnished

Energy Efficiency Rating		
	Current	Potential
Very energy efficient - lower running costs		
(92-100) A		
(81-91) B	84	84
(69-80) C		
(55-68) D		
(39-54) E		
(21-38) F		
(1-20) G		
Not energy efficient - higher running costs		
England, Scotland & Wales		EU Directive 2002/91/EC

Chestertons Tower Bridge Lettings

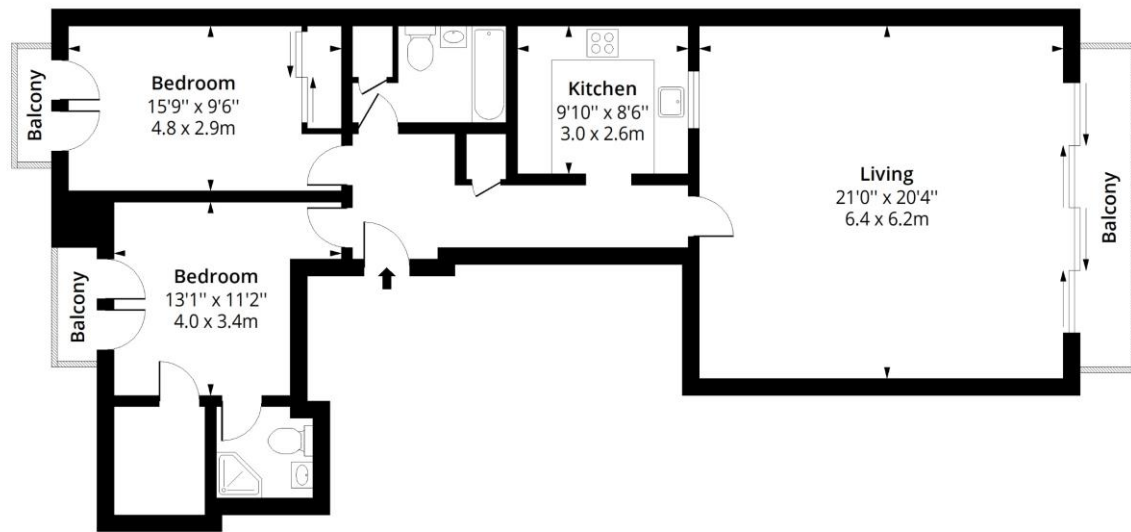
220 Tower Bridge Road
 Tower Bridge
 London
 SE1 2UP
 towerbridge@chestertons.co.uk
 02073576911
 chestertons.co.uk

Additional tenant charges apply (fees apply to non-AST tenancies only)
 Tenancy Agreement Fee: £300
 References per Tenant/Guarantor: £60
 Inventory check (approx. £100 – £250 inc. VAT)
 chestertons.co.uk/property-to-rent/applicable-fees

Benbow House, SE1

Approx. Gross Internal Area 1048 Sq Ft - 97.36 Sq M

Approx. Gross Balcony Area 67 Sq Ft - 6.22 Sq M



Seventh Floor

Floor Area 1048 Sq Ft - 97.36 Sq M



Measured according to RICS IPMS2. Floor plan is for illustrative purposes only and is not to scale. Every attempt has been made to ensure the accuracy of the floor plan shown, however all measurements, fixtures, fittings and data shown are an approximate interpretation for illustrative purposes only. 1 sq m = 10.76 sq feet.

lpaplus.com

Date: 20/5/2024



This paper is
100% recyclable