



Clifton Crescent

London, SE15

£3,400 per month
(£784.62 per week)

An immaculate, Grade II Listed townhouse house. This property is a captivating blend of comfort and style, ideally suited for families or couples seeking a house that provides functionality and elegance.

CHESTERTONS



Clifton Crescent

London, SE15

- THREE BEDROOM
- TWO BATHROOMS
- PRIVATE GARDEN
- FURNISHED



An immaculate, Grade II Listed townhouse house. This property is a captivating blend of comfort and style, ideally suited for families or couples seeking a house that provides functionality and elegance. The property comprises three bedrooms, two bathrooms, open plan living space and private garden.

Minimum Term: 12 months
Deposit Required: £3,923.08
Local Authority: London Borough of Southwark
Council Tax Band: D
EPC Rating: D
Furnished

Energy Efficiency Rating		
	Current	Potential
Very energy efficient - lower running costs		
A (92-100)		
B (81-91)		88
C (69-80)		
D (55-68)	66	
E (39-54)		
F (21-38)		
G (1-20)		
Not energy efficient - higher running costs		
England, Scotland & Wales		EU Directive 2002/91/EC

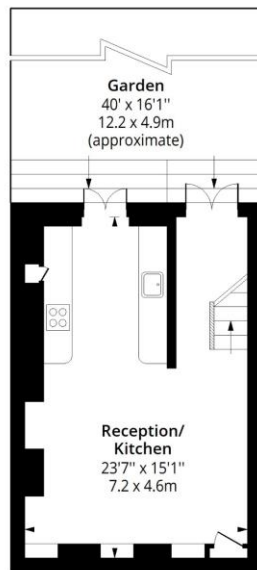
Chestertons Tower Bridge Lettings

220 Tower Bridge Road
 Tower Bridge
 London
 SE1 2UP
 towerbridgelettingsusers@chestertons.co.uk
 02073576911
 chestertons.co.uk

Additional tenant charges apply (fees apply to non-AST tenancies only)
 Tenancy Agreement Fee: £300
 References per Tenant/Guarantor: £60
 Inventory check (approx. £100 – £250 inc. VAT)
 chestertons.co.uk/property-to-rent/applicable-fees

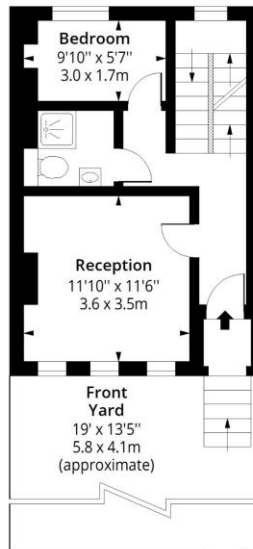
Clifton Crescent, SE15

Approx. Gross Internal Area 1066 Sq Ft - 99.04 Sq M



Lower Ground Floor

Floor Area 358 Sq Ft - 33.26 Sq M



Ground Floor

Floor Area 347 Sq Ft - 32.24 Sq M



First Floor

Floor Area 361 Sq Ft - 33.54 Sq M



Measured according to RICS IPMS2. Floor plan is for illustrative purposes only and is not to scale. Every attempt has been made to ensure the accuracy of the floor plan shown, however all measurements, fixtures, fittings and data shown are an approximate interpretation for illustrative purposes only. 1 sq m = 10.76 sq feet.

lpaplus.com

Date: 16/1/2025



This paper is
100% recyclable