



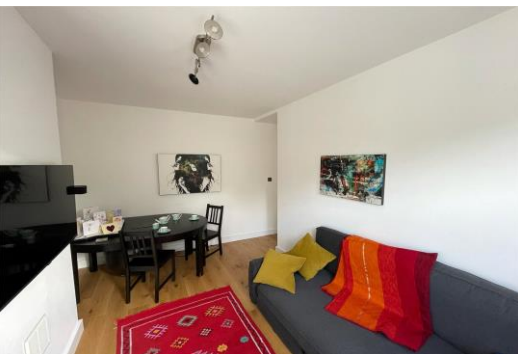
Tanner House

Tanner Street, SE1

£2,000 pcm

A modern two bedroom ground floor flat offering a contemporary living space located moments from London Bridge and Shad Thames.

CHESTERTONS



Tanner House

Tanner Street, SE1

- Modern Flat
- Two Bedrooms
- Ground Floor
- Furnished



A modern two bedroom ground floor flat that offers a contemporary living space located moments from London Bridge and Shad Thames.

Bermondsey is situated on the south bank of the River Thames and is one of the capital's most up and coming areas. Bermondsey is on the Jubilee line making Canary Wharf and West London easily accessible. The area has a weekly antiques market on a Friday and is a short walk to Shad Thames, London Bridge & Bermondsey Street which are home to an array of bars and restaurants.

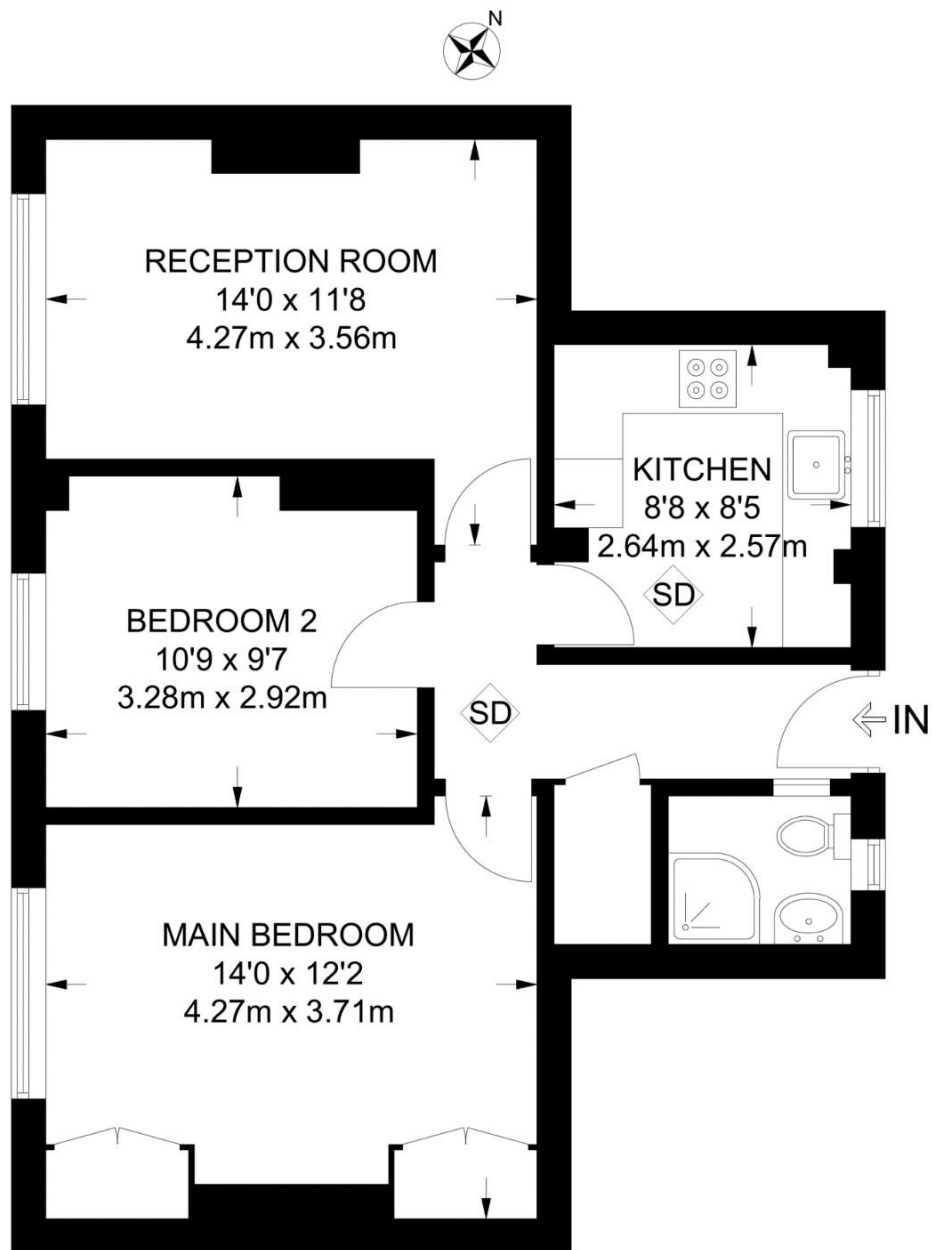
Tenure: To be advised
Furnished

Additional tenant charges apply (fees apply to non-AST tenancies only)
Tenancy Agreement Fee: £300
References per Tenant/Guarantor: £60
Inventory check (approx. £100 – £250 inc. VAT)
[chestertons.com/property-to-rent/applicable-fees](https://www.chestertons.com/property-to-rent/applicable-fees)

Energy Efficiency Rating		
	Current	Potential
Very energy efficient - lower running costs		
(94-100) A		
(81-93) B		
(69-80) C	79	79
(55-68) D		
(39-54) E		
(21-38) F		
(1-20) G		
Not energy efficient - higher running costs		
England, Scotland & Wales EU Directive 2002/91/EC		

Chestertons Tower Bridge Lettings

220 Tower Bridge Road
Tower Bridge
London
SE1 2UP
lettings.towerbridge@chestertons.com
02073576911
[chestertons.com](https://www.chestertons.com)



GROUND FLOOR

APPROXIMATE GROSS INTERNAL AREA
594 SQ FT / 55.2 SQ M

This plan has been drawn for illustrative and identification purposes only.

