



Londinium Tower

Mansell Street, E1

£3,250 per month
(£750 per week)

SHORT LET* An amazing one bedroom furnished apartment. The property offers balcony, good size bedroom, large reception room and modern bathroom and kitchen.



Londinium Tower

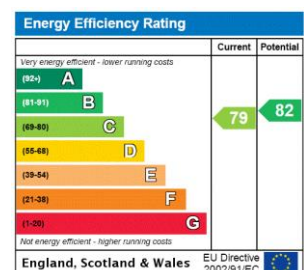
Mansell Street, E1

- SHORT LET
- ALL BILLS INCLUDED
- ONE BEDROOM
- CONCIERGE
- FURNISHED



SHORT LET* An amazing one bedroom, furnished flat. The property benefits from a spacious bedroom, sizable living area including a private balcony and separate kitchen with modern contemporary furnishings throughout. The development offers a day porter service and comes with a secure underground parking space. Located just five minutes from both Aldgate East and Tower Hill Stations, this apartment is the ideal choice for any professional looking for a short commute to both the City and Canary Wharf.

Minimum Term: 2 months
Deposit Required: £3,750.00
Local Authority: London Borough Of Tower Hamlets
Council Tax Band: D
EPC Rating: C



Chestertons Tower Bridge Lettings

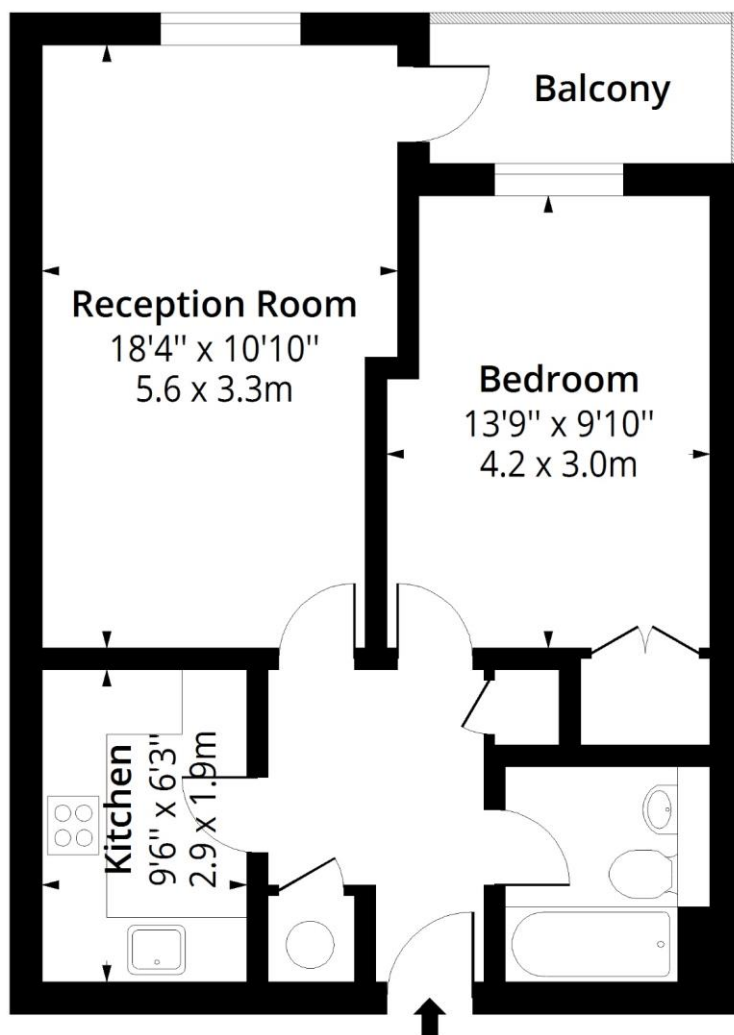
220 Tower Bridge Road
 Tower Bridge
 London
 SE1 2UP
lettings.towerbridge@chestertons.co.uk
 02073576911
chestertons.co.uk

Additional tenant charges apply (fees apply to non-AST tenancies only)
 Tenancy Agreement Fee: £300
 References per Tenant/Guarantor: £60
 Inventory check (approx. £100 – £250 inc. VAT)
chestertons.co.uk/property-to-rent/applicable-fees

Londinium Tower, E1

Approx. Gross Internal Area 537 Sq Ft - 49.89 Sq M

Approx. Gross Balcony Area 39 Sq Ft - 3.62 Sq M



Fourth Floor

Floor Area 537 Sq Ft - 49.89 Sq M



Measured according to RICS IPMS2. Floor plan is for illustrative purposes only and is not to scale. Every attempt has been made to ensure the accuracy of the floor plan shown, however all measurements, fixtures, fittings and data shown are an approximate interpretation for illustrative purposes only. 1 sq m = 10.76 sq feet.

lpaplus.com

Date: 18/5/2023



This paper is
100% recyclable