



Tower Bridge Road

London, SE1

£1,750 per month
(£403.85 per week)

Excellent one bedroom apartment located on the second floor above commercial premises offers open plan living room with modern fitted kitchen, double bedroom and modern shower room.



Tower Bridge Road

London, SE1

- One Bedroom
- Modern
- Open Plan Space



Excellent one bedroom apartment located on the second floor above commercial premises offers open plan living room with modern fitted kitchen, double bedroom and modern shower room. The property offers wooden flooring throughout, double glazing and entry phone system.

It's situated on the ever popular Tower Bridge Road just a short walk from the Bermondsey Street.

Bermondsey is popular and vibrant area located the South bank of the River Thames Bermondsey Street, Maltby Street & Borough markets. The underground station in close walking distance is on the Jubilee line providing easy access to Canary Wharf and West London. The area also has a weekly antiques market on a Friday and is a short walk to Shad Thames & Bermondsey Street which are home to an array of artisan stores, bars and restaurants.

Minimum Term: 12 months
Deposit Required: £2,019.23
Local Authority: London Borough of Southwark (Council Tax)
Council Tax Band: C
EPC Rating: C
Unfurnished

Energy Efficiency Rating		
	Current	Potential
Very energy efficient - lower running costs		
(94-100) A		
(81-93) B		
(69-80) C	79	79
(55-68) D		
(39-54) E		
(21-38) F		
(1-20) G		
Not energy efficient - higher running costs		
England, Scotland & Wales EU Directive 2002/91/EC		

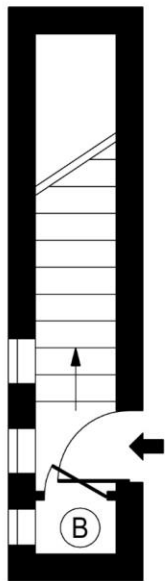
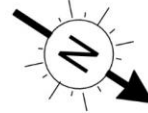
Chestertons Tower Bridge Lettings

220 Tower Bridge Road
 Tower Bridge
 London
 SE1 2UP
lettings.towerbridge@chestertons.co.uk
 02073576911
chestertons.co.uk

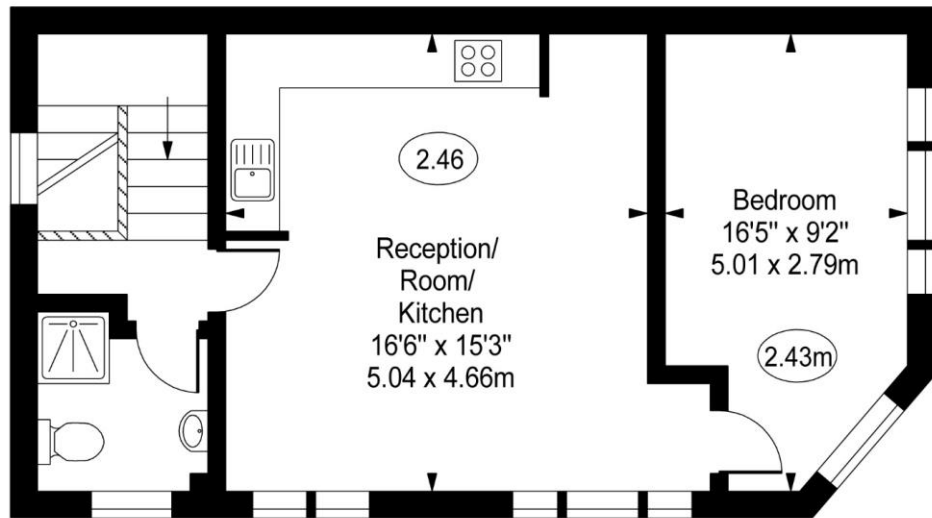
Additional tenant charges apply (fees apply to non-AST tenancies only)
 Tenancy Agreement Fee: £300
 References per Tenant/Guarantor: £60
 Inventory check (approx. £100 – £250 inc. VAT)
chestertons.co.uk/property-to-rent/applicable-fees

Tower Bridge Road, SE1

○ - Ceiling Height



First Floor



Second Floor

Approx Gross Internal Area **566 Sq Ft - 52.58 Sq M**

For Illustration Purposes Only - Not To Scale

www.goldlens.co.uk

Ref. No. 015979R

