



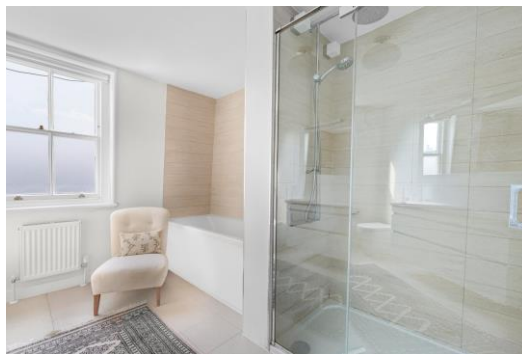
Walcot Square

London, SE11

16,033.33 £ per month
(3,700 £ per week)

An elegant and modern recently refurbished two double bedroom, two bathroom house with garden located within a Conversation Area. This stunning property comprises, a double reception room, a modern kitchen /dining room with door to garden, two double bedrooms, two bathrooms, a separate w.c, wooden floors and feature fireplaces throughout.

CHESTERTONS



Walcot Square

London, SE11

Two Double Bedrooms
Two Bathrooms
Double Reception Room
Kitchen/ Diner
Garden
Grade II Listed Building



This Grade II Listed terrace house features a wealth of architectural period elements with; stucco details, casement windows and cast iron railings and balconettes and sits with the distinguished garden square of Walcot Square. Conveniently situated for many local cafes and Elephant & Castle Underground station and the variety of eateries of Elephant Park.

Minimum Term: 12 months
Deposit Required: 18,500.00 £
Local Authority:
Council Tax Band:
EPC Rating: To be confirmed
Unfurnished

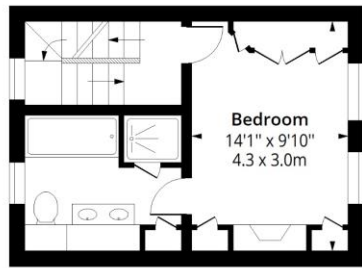
Chestertons Tower Bridge Lettings

220 Tower Bridge Road
Tower Bridge
London
SE1 2UP
towerbridgelettingsusers@chestertons.co.uk
02073576911
chestertons.co.uk

Additional tenant charges apply (fees apply to non-AST tenancies only)
Tenancy Agreement Fee: £300
References per Tenant/Guarantor: £60
Inventory check (approx. £100 – £250 inc. VAT)
[chestertons.co.uk/property-to-rent/applicable-fees](https://www.chestertons.co.uk/property-to-rent/applicable-fees)

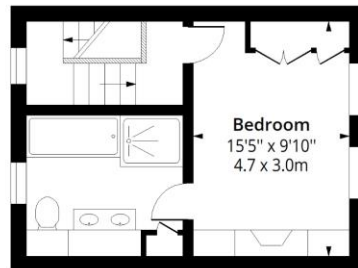
Walcot Square, SE11

Approx. Gross Internal Area 1284 Sq Ft - 119.28 Sq M



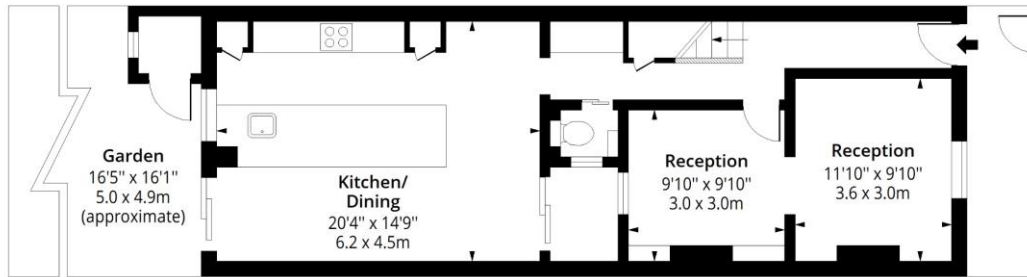
First Floor

Floor Area 286 Sq Ft - 26.57 Sq M



Second Floor

Floor Area 300 Sq Ft - 27.87 Sq M



Ground Floor

Floor Area 698 Sq Ft - 64.84 Sq M



Measured according to RICS IPMS2. Floor plan is for illustrative purposes only and is not to scale. Every attempt has been made to ensure the accuracy of the floor plan shown, however all measurements, fixtures, fittings and data shown are an approximate interpretation for illustrative purposes only. 1 sq m = 10.76 sq feet.

lpaplus.com

Date: 5/3/2025



This paper is
100% recyclable