



Frederick Square

London, SE16

£325 per week
(£1,408.33 pcm)

A charming apartment found on the 1st floor of this gated river facing development. The property boasts a beautifully light reception room with partial river views, separate kitchen, 2 bedrooms and bathroom.



Frederick Square

London, SE16

- Riverside Development
- Situated On The 1st Floor
- Two Bedrooms
- Two Bathrooms
- Excellent Location
- Available Furnished

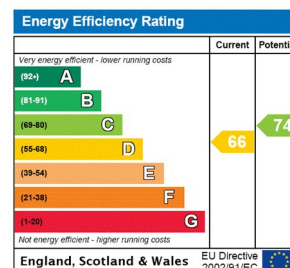
A charming two bedroom (one double and one single) bedroom apartment found on the 1st floor of this gated river facing development. The property boasts a beautifully light reception room with partial river views, separate kitchen, one double bedroom, one single bedroom and bathroom.

Canada Water & Rotherhithe are charming areas situated south of the river Thames. The area is well connected via Canada Water, Surrey Quays and Rotherhithe stations as-well as the river taxi making The City and Canary Wharf easily accessible. Although residents can enjoy walks along the banks of the river to Shad Thames which is home to array of bars and restaurants, the area

Tenure: To be advised

Furnished

Additional tenant charges apply (fees apply to non-AST tenancies only)
Tenancy Agreement Fee: £300
References per Tenant/Guarantor: £60
Inventory check (approx. £100 – £250 inc. VAT)
[chestertons.com/property-to-rent/applicable-fees](https://www.chestertons.com/property-to-rent/applicable-fees)



Chestertons Tower Bridge Lettings

220 Tower Bridge Road

Tower Bridge

London

SE1 2UP

lettings.towerbridge@chestertons.com

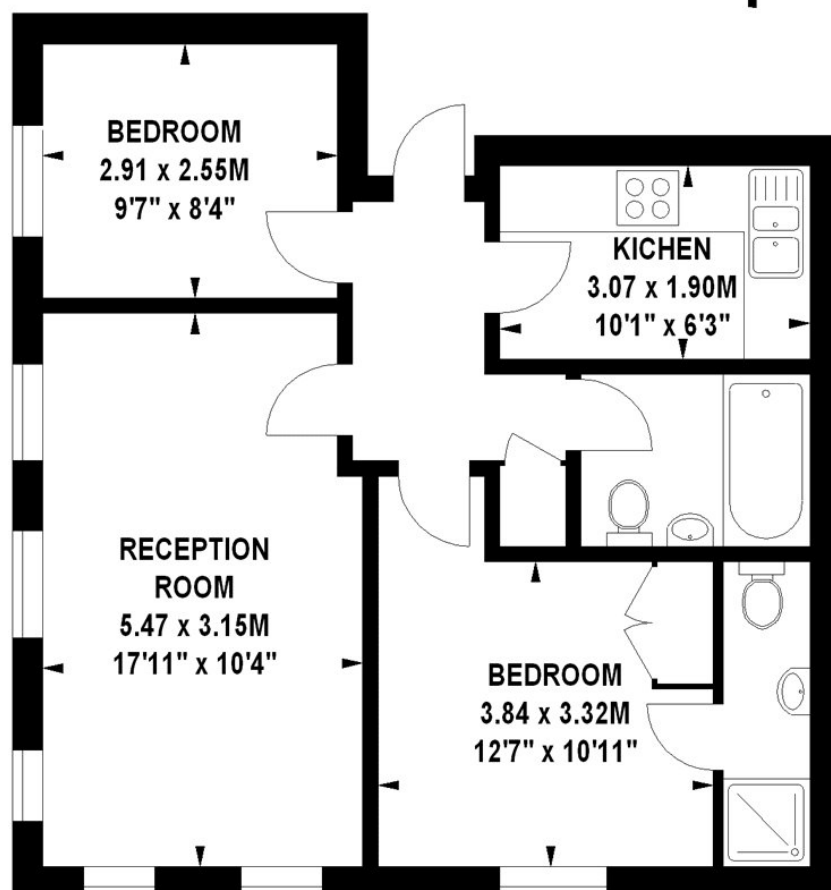
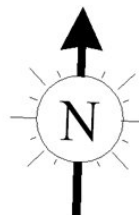
02073576911

[chestertons.com](https://www.chestertons.com)

Fredrick Square, SE16

Approximate gross internal area

55.09 sq m / 593 sq ft



Second Floor

The floor plan is not to scale and measurements and areas shown are approximate and therefore should be used for illustrative purposes only.

The plan has been prepared in accordance with the RICS code of Measuring Practice and whilst we have confidence in the information produced, it must not be relied on.

If there is any aspect of particular importance, you should carry out or commission your own inspection of the property.

Copyright of FeaturePRO.