



# Rockingham Street

London, SE1

£2,600 per month  
(£600 per week)

A fantastic three bedroom flat conveniently located moments from Elephant & Castle station. The property comes fully furnished and comprises; living room, eat in kitchen, modern bathroom and three bedrooms. For a family or a maximum of TWO sharers.





# Rockingham Street

London, SE1

- MODERN KITCHEN
- TWO BEDROOM
- MODERN BATHROOM
- FURNISHED



A fantastic three bedroom flat conveniently located moments from Elephant & Castle station. The property comes fully furnished and comprises; living room, eat in kitchen, modern bathroom and three bedrooms. Suitable for a family or a maximum of TWO sharers

**Minimum Term:** 12 months  
**Deposit Required:** £3,000.00  
**Local Authority:** London Borough of Southwark  
**Council Tax Band:** C  
**EPC Rating:** D  
**Furnished**

Energy Efficiency Rating		
	Current	Potential
Very energy efficient - lower running costs		
(94-100) <b>A</b>		
(81-93) <b>B</b>		
(69-80) <b>C</b>		
(55-68) <b>D</b>	67	75
(39-54) <b>E</b>		
(21-38) <b>F</b>		
(1-20) <b>G</b>		
Not energy efficient - higher running costs		
England, Scotland & Wales EU Directive 2002/91/EC		

### Chestertons Tower Bridge Lettings

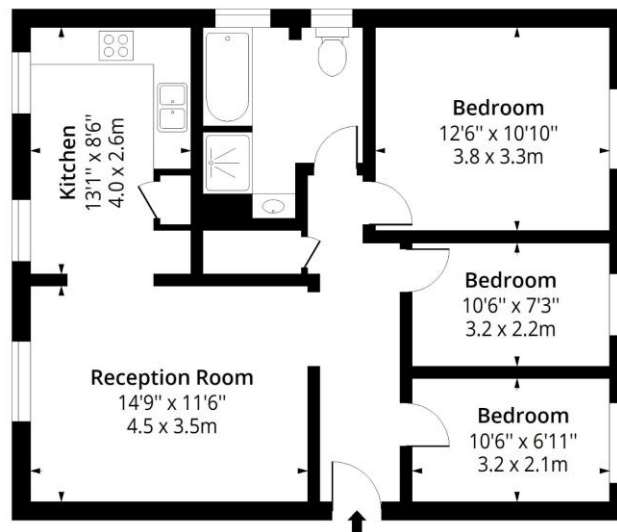
220 Tower Bridge Road  
 Tower Bridge  
 London  
 SE1 2UP  
 towerbridgelettingsusers@chestertons.co.uk  
 02073576911  
 chestertons.co.uk

Additional tenant charges apply (fees apply to non-AST tenancies only)  
 Tenancy Agreement Fee: £300  
 References per Tenant/Guarantor: £60  
 Inventory check (approx. £100 – £250 inc. VAT)  
 chestertons.co.uk/property-to-rent/applicable-fees



# Rockingham Street, SE1

Approx. Gross Internal Area 779 Sq Ft - 72.37 Sq M



## Ground Floor

Floor Area 779 Sq Ft - 72.37 Sq M



Measured according to RICS IPMS2. Floor plan is for illustrative purposes only and is not to scale. Every attempt has been made to ensure the accuracy of the floor plan shown, however all measurements, fixtures, fittings and data shown are an approximate interpretation for illustrative purposes only. 1 sq m = 10.76 sq feet.

lpaplus.com

Date: 16/3/2023



This paper is  
100% recyclable