



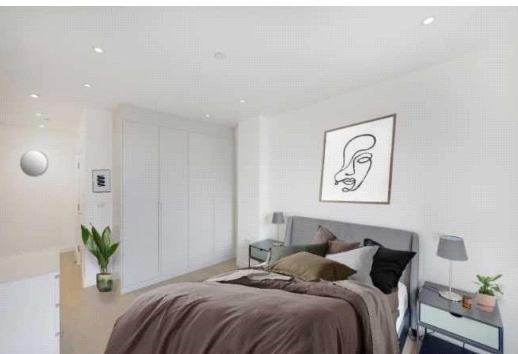
# New Apex Court

47 Grange Walk, SE1

£4,000 per month  
(£923.08 per week)

SHORT LET\* A contemporary two-bedroom two-bathroom apartment with balcony on the third floor of a highly desirable residential development.

CHESTERTONS



# New Apex Court

47 Grange Walk, SE1

- TWO BEDROOM
- TWO BATHROOM
- SHORT LET
- ALL BILLS INCLUDED



SHORT LET\* A contemporary two-bedroom two-bathroom apartment with balcony on the third floor of a highly desirable residential development. Apex Court was constructed in 2020 and is ideally located for quick and easy access to Bermondsey Street, Maltby Street market, Tanner Street Park, Shad Thames, Bermondsey Square and Borough Market. Nearby transport links at London Bridge and Bermondsey Stations provide access for Jubilee and Northern underground lines plus National Rail.

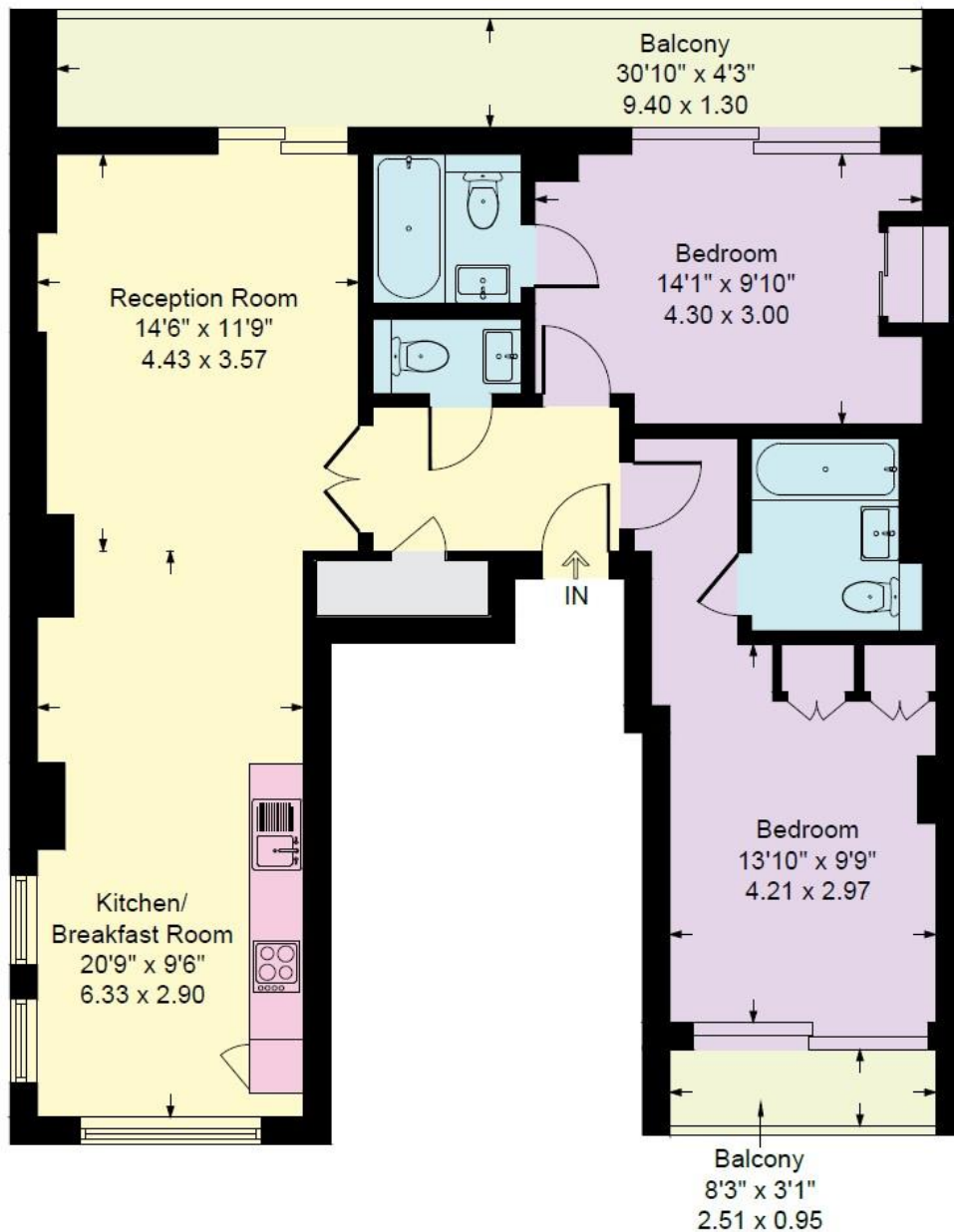
**Minimum Term:** 2 months  
**Deposit Required:** £0.00  
**Local Authority:** London Borough of Southwark (Council Tax)  
**Council Tax Band:** E  
**EPC Rating:** C  
**Furnished**

Energy Efficiency Rating		
	Current	Potential
Very energy efficient - lower running costs		
(94-100) <b>A</b>		
(81-93) <b>B</b>		
(69-80) <b>C</b>	74	74
(55-68) <b>D</b>		
(39-54) <b>E</b>		
(21-38) <b>F</b>		
(1-20) <b>G</b>		
Not energy efficient - higher running costs		
England, Scotland & Wales EU Directive 2002/91/EC		

### *Chestertons Tower Bridge Lettings*

220 Tower Bridge Road  
 Tower Bridge  
 London  
 SE1 2UP  
[lettings.towerbridge@chestertons.co.uk](mailto:lettings.towerbridge@chestertons.co.uk)  
 02073576911  
[chestertons.co.uk](https://www.chestertons.co.uk)

Additional tenant charges apply (fees apply to non-AST tenancies only)  
 Tenancy Agreement Fee: £300  
 References per Tenant/Guarantor: £60  
 Inventory check (approx. £100 – £250 inc. VAT)  
[chestertons.co.uk/property-to-rent/applicable-fees](https://www.chestertons.co.uk/property-to-rent/applicable-fees)



**Third Floor**  
**Approximate Floor Area**

