



# Apex Court

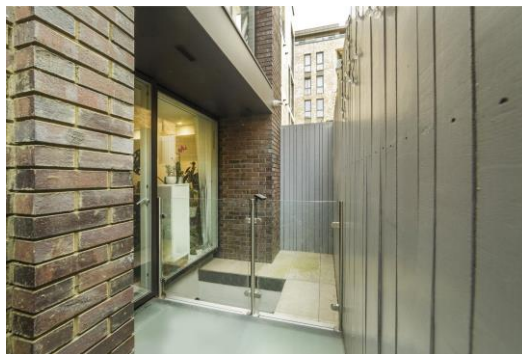
47 Grange Walk, SE1

£2,200 per month  
(£507.69 per week)

A contemporary two-bedroom two-bathroom apartment with balcony on the ground floor of a highly desirable residential development.

**CHESTERTONS**





# Apex Court

47 Grange Walk, SE1

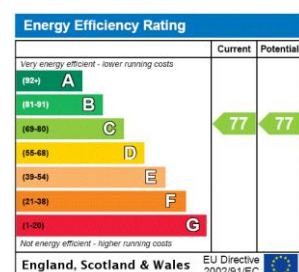
- Two bedroom
- Two bathroom
- One reception room
- Terrace
- Duplex
- Leasehold
- Modern





This modern two-bedroom two bathroom apartment at Apex court features an open plan kitchen living space, fully tiled family bathroom and a private terrace and patio. Situated on a quiet leafy street, this property is in fantastic condition and has ample storage. This property is finished to a high specification, with modern fittings and the open plan kitchen living space is bright and spacious, with direct access to the terrace. The bedrooms are large doubles boasting fitted wardrobes and are flooded with natural light. Apex Court was constructed in 2020 and is ideally located for quick and easy access to Bermondsey Street, Maltby Street market, Tanner Street Park, Shad Thames, Bermondsey Square and Borough Market.

**Minimum Term:** 12 months  
**Deposit Required:** £2,538.46  
**Local Authority:** London Borough of Southwark  
**Council Tax Band:** E  
**EPC Rating:** C  
**Furnished**

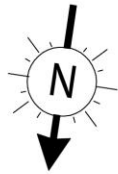


### Chestertons Tower Bridge Lettings

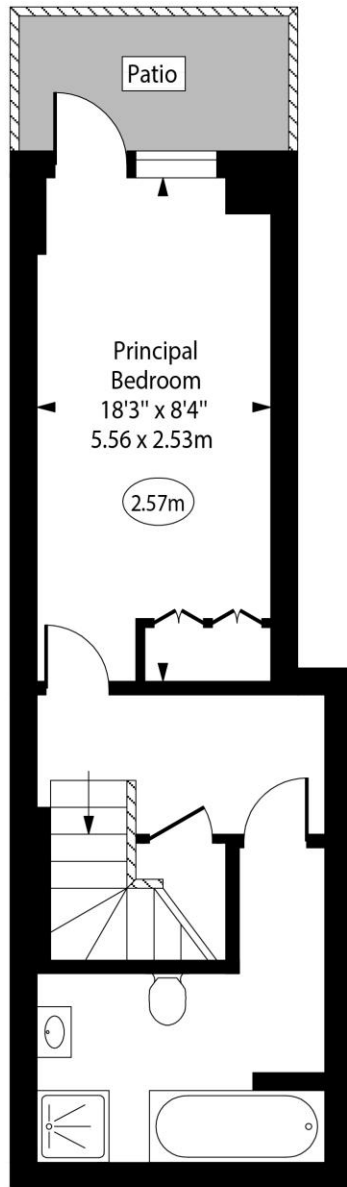
220 Tower Bridge Road  
 Tower Bridge  
 London  
 SE1 2UP  
[towerbridgelettingsusers@chestertons.co.uk](mailto:towerbridgelettingsusers@chestertons.co.uk)  
 02073576911  
[chestertons.co.uk](https://www.chestertons.co.uk)

Additional tenant charges apply (fees apply to non-AST tenancies only)  
 Tenancy Agreement Fee: £300  
 References per Tenant/Guarantor: £60  
 Inventory check (approx. £100 – £250 inc. VAT)  
[chestertons.co.uk/property-to-rent/applicable-fees](https://www.chestertons.co.uk/property-to-rent/applicable-fees)

# Apex Court, Grange Walk, SE1

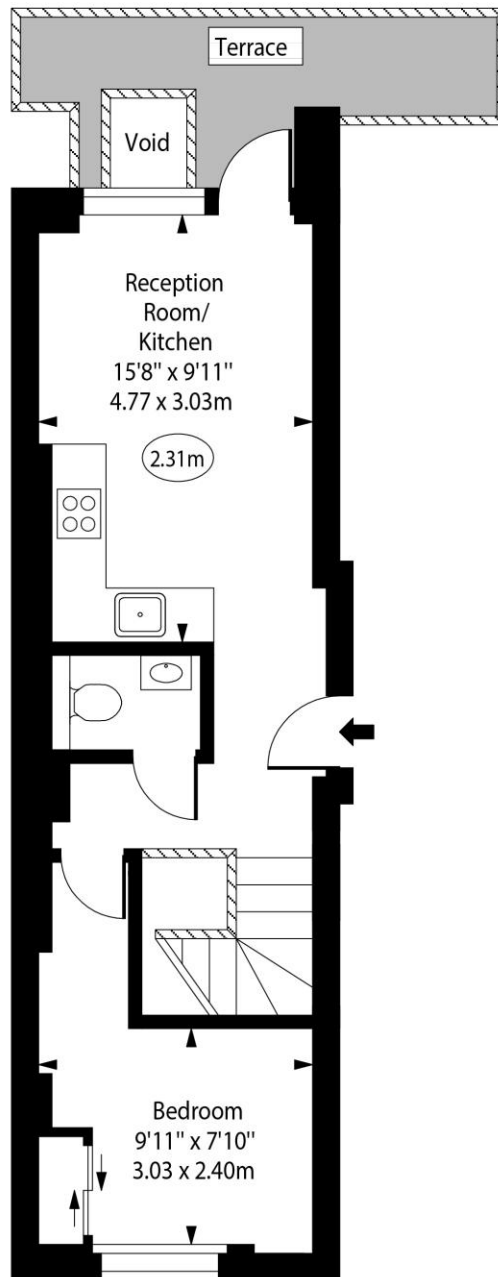


○ - Ceiling Height



Lower Ground Floor

Approx Gross Internal Area



Ground Floor

730 Sq Ft - 67.82 Sq M

For Illustration Purposes Only - Not To Scale

