

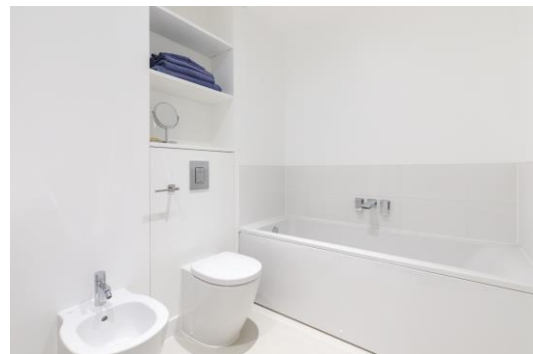


Butlers & Colonial Wharf

London, SE1

£3,250 per month
(£750 per week)

A beautiful apartment situated on the 3rd floor of this sought after development in the heart of Shad Thames. The property boasts a large open plan reception/kitchen, south facing balcony and a residents porter.



Butlers & Colonial Wharf

London, SE1

- TWO BEDROOM
- TWO BATHROOM
- MODERN
- FURNISHED
- PORTER



A beautiful apartment situated on the 3rd floor of this sought after development in the heart of Shad Thames. The property boasts a large open plan reception/kitchen, south facing balcony and a residents porter.

Minimum Term: 12 months
Deposit Required: £3,750.00
Local Authority: London Borough of Southwark
Council Tax Band: E
EPC Rating: B
Furnished

Energy Efficiency Rating		
	Current	Potential
Very energy efficient - lower running costs		
A (92-100)		
B (81-91)	84	86
C (69-80)		
D (55-68)		
E (39-54)		
F (21-38)		
G (1-20)		
Not energy efficient - higher running costs		
England, Scotland & Wales EU Directive 2002/91/EC		

Chestertons Tower Bridge Lettings

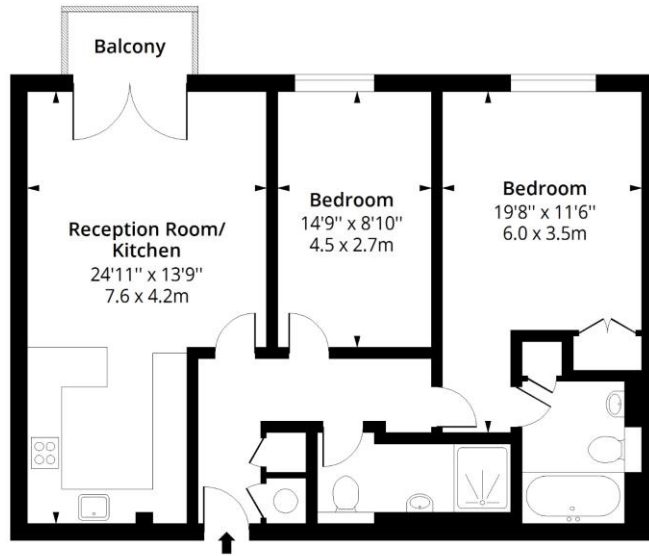
220 Tower Bridge Road
 Tower Bridge
 London
 SE1 2UP
 towerbridgelettingsusers@chestertons.co.uk
 02073576911
 chestertons.co.uk

Additional tenant charges apply (fees apply to non-AST tenancies only)
 Tenancy Agreement Fee: £300
 References per Tenant/Guarantor: £60
 Inventory check (approx. £100 – £250 inc. VAT)
 chestertons.co.uk/property-to-rent/applicable-fees

Butlers & Colonial Wharf, SE1

Approx. Gross Internal Area 884 Sq Ft - 82.12 Sq M

Approx. Gross Balcony/ Terrace Area 26 Sq Ft - 2.42 Sq M



Third Floor

Floor Area 884 Sq Ft - 82.12 Sq M



Measured according to RICS IPMS2. Floor plan is for illustrative purposes only and is not to scale. Every attempt has been made to ensure the accuracy of the floor plan shown, however all measurements, fixtures, fittings and data shown are an approximate interpretation for illustrative purposes only. 1 sq m = 10.76 sq feet.

lpaplus.com

Date: 18/5/2023



This paper is
100% recyclable