



Walcot Square

London, SE11

3,900 £ per month
(900 £ per week)

Sorry, no HMO allowed. An elegant and newly refurbished Grade II Listed four bedroom terrace house with private garden, set on this beautiful garden square. Located within easy reach of Elephant & Castle station and the amenities of Elephant Park.



Walcot Square

London, SE11

- Four Bedrooms
- Newly Refurbished Throughout
- Close To Transport Links
- Grade II Listed Building
- Stunning Location



An elegant and newly refurbished four bedroom with garden located within a Conversation Area, comprising; four double bedrooms, double reception room, kitchen with doors to private garden, bathroom and separate w.c. with wooden floors and feature fireplaces throughout.

This Grade II Listed terrace house features a wealth of architectural period elements with; stucco details, casement windows and cast iron railings and balconettes and sits with the distinguished garden square of Walcot Square. Conveniently situated for many local cafes and Elephant & Castle Underground station and the variety of eateries of Elephant Park.

Minimum Term: 12 months
Deposit Required: 4,500.00 £
Local Authority:
Council Tax Band:
EPC Rating: D
Unfurnished

Chestertons Tower Bridge Lettings

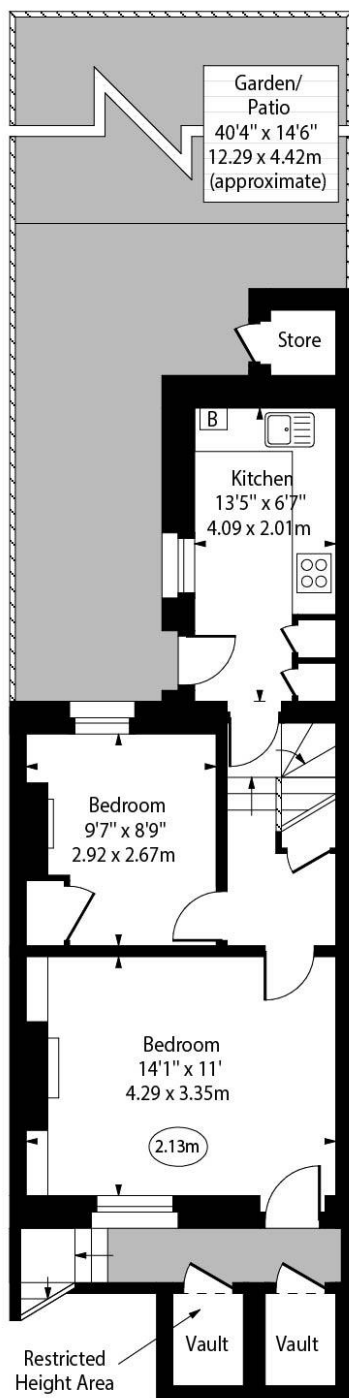
220 Tower Bridge Road
Tower Bridge
London
SE1 2UP
towerbridgelettingsusers@chestertons.co.uk
02073576911
chestertons.co.uk

Additional tenant charges apply (fees apply to non-AST tenancies only)
Tenancy Agreement Fee: £300
References per Tenant/Guarantor: £60
Inventory check (approx. £100 – £250 inc. VAT)
[chestertons.co.uk/property-to-rent/applicable-fees](https://www.chestertons.co.uk/property-to-rent/applicable-fees)

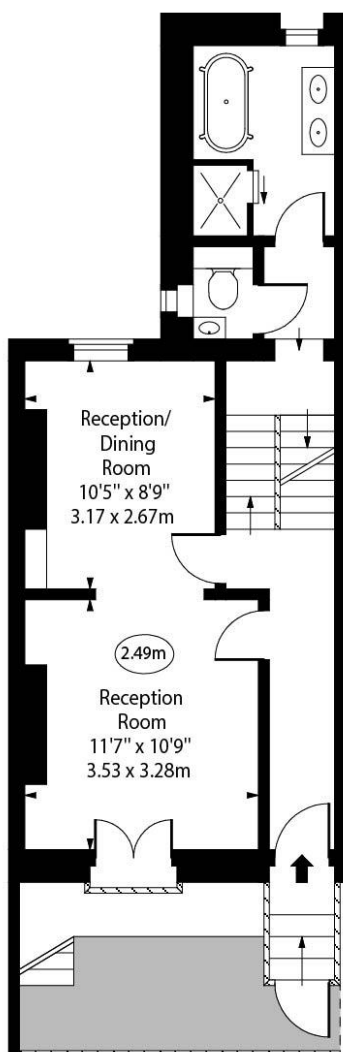
Walcot Square, SE11



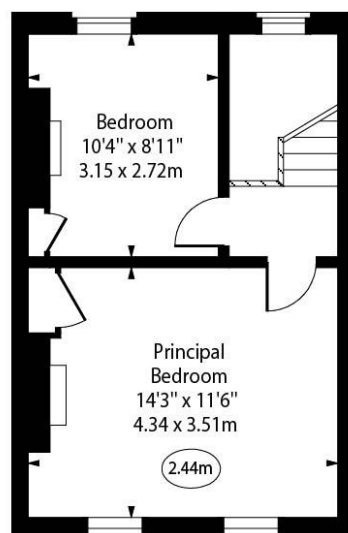
○ - Ceiling Height



Lower Ground Floor



Upper Ground Floor



First Floor

Approx Gross Internal Area 1135 Sq Ft - 105.44 Sq M

(Excluding Store & Vaults)

For Illustration Purposes Only - Not To Scale

www.goldlens.co.uk

Ref. No. 027507K

