



Tea Trade Wharf

26 Shad Thames, SE1

£3,300 per month
(£761.54 per week)

A modern one bedroom apartment situated on the 3rd floor of this popular river side development. The apartment is available furnished and boasts Tower Bridge and river views as well as a porter and use of leisure facilities. UNFURNISHED

CHESTERTONS



Tea Trade Wharf

26 Shad Thames, SE1

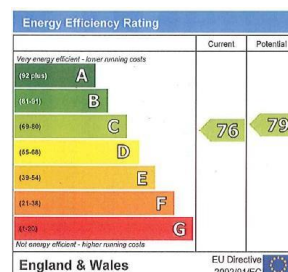
- Riverside Development
- Modern One Bedroom Apartment
- Balcony With River Views
- Available Unfurnished
- Use Of Swimming Pool & Leisure Facilities



A modern one bedroom apartment situated on the 3rd floor of this popular river side development. The apartment is available furnished and boasts beautiful Tower Bridge and river views as well as a 24 hour porter, lift and use of swimming pool and leisure facilities. EPC Rating C. UNFURNISHED

Shad Thames is a unique area steeped in history and character situated along the south side of the River Thames. The area is home to London's most iconic landmark, Tower Bridge and is within the vicinity of many attractions such as The Shard, Tate Modern and Tower of London. Shad Thames boasts a variety of bars and restaurants and is a short walk to the delights of Bermondsey Street, Maltby Street & Borough markets. Although The City is within walking distance the area is well connected with excellent transport links via London Bridge & Tower Hill stations as well as the river taxi.

Minimum Term: 12 months
Deposit Required: £3,807.69
Local Authority: Southwark Council
Council Tax Band: G
EPC Rating: C
Unfurnished

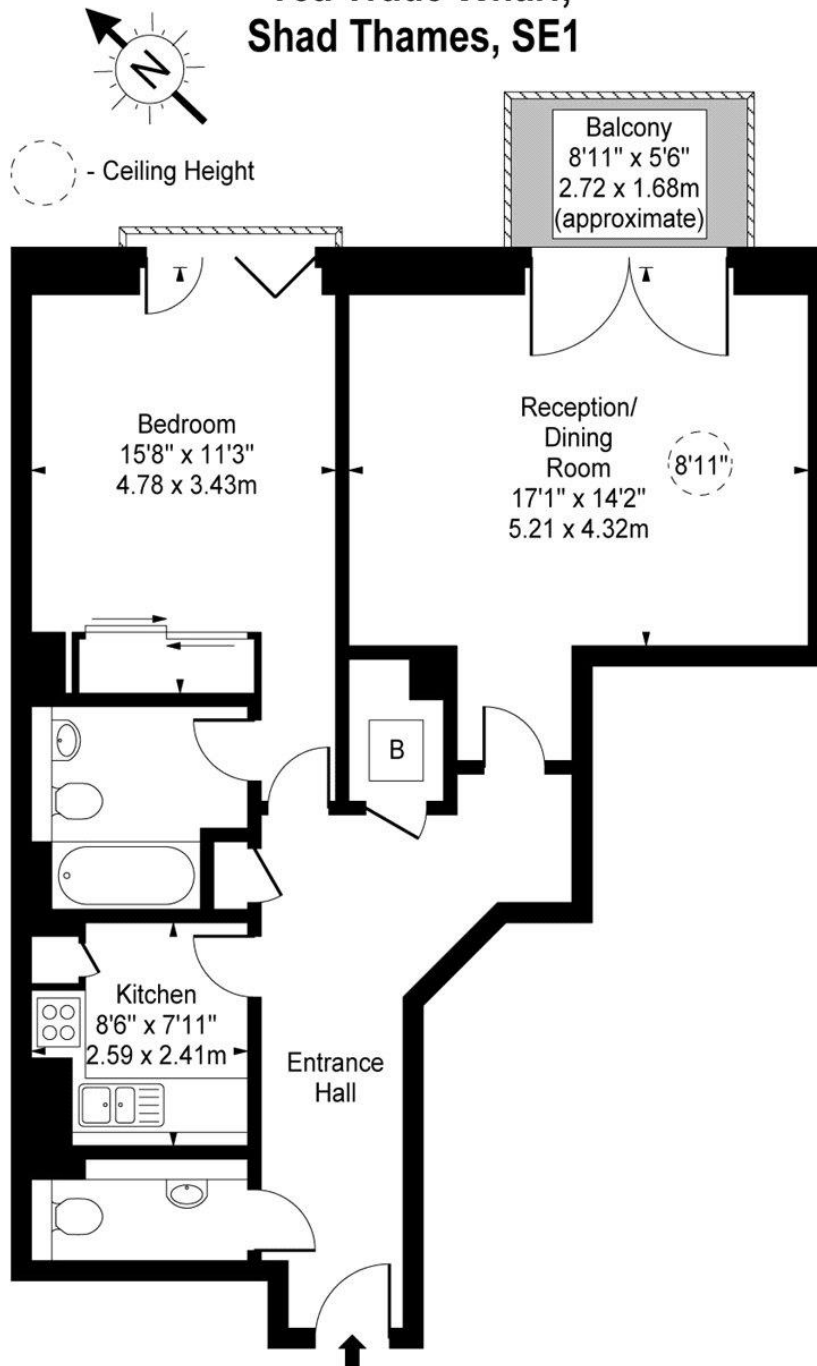


Chestertons Premier Property Management

26 Clifton Road
 London
 W9 1SX
 premier.dept@chestertons.co.uk
 02072985908
 chestertons.co.uk

Additional tenant charges apply (fees apply to non-AST tenancies only)
 Tenancy Agreement Fee: £300
 References per Tenant/Guarantor: £60
 Inventory check (approx. £100 – £250 inc. VAT)
 chestertons.co.uk/property-to-rent/applicable-fees

Tea Trade Wharf, Shad Thames, SE1



Third Floor

Approx Gross Internal Area **778 Sq Ft - 72.28 Sq M**

For Illustration Purposes Only - Not To Scale

www.goldlens.co.uk

Ref. No. 009399M

