

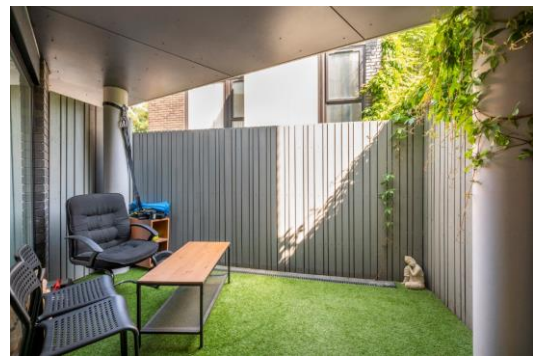


Vantage Court

551 Old Kent Road, SE1

£1,850 per month
(£426.92 per week)

Stylish one-bedroom ground floor apartment presented in excellent condition and benefits from both a serene terrace and private patio



Vantage Court

551 Old Kent Road, SE1

- MODERN
- ONE BEDROOM
- OPEN PLAN
- PRIVATE PATIO



Stylish one-bedroom ground floor apartment presented in excellent condition and benefits from both a serene terrace and private patio

Minimum Term: 12 months
Deposit Required: £2,134.62
Local Authority: London Borough of Southwark (Council Tax)
Council Tax Band: C
EPC Rating: D
Furnished

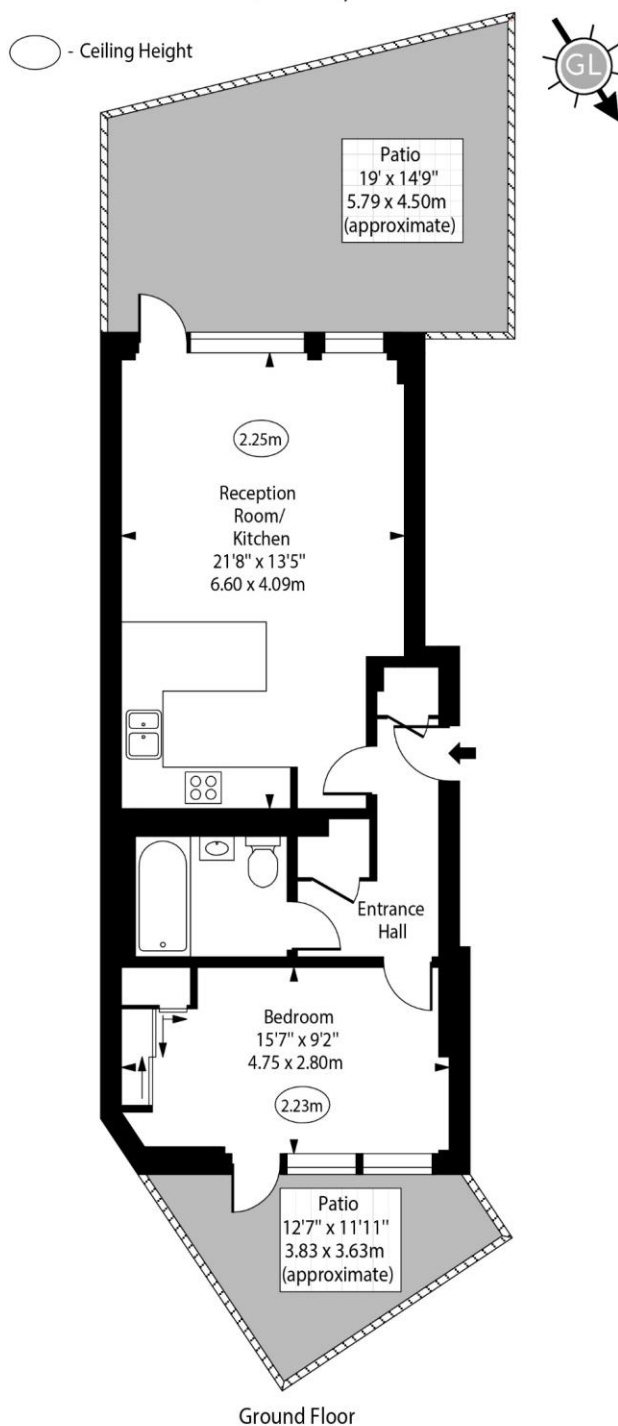
Energy Efficiency Rating		
	Current	Potential
Very energy efficient - lower running costs		
A (92-100)		
B (81-91)		
C (69-80)		
D (55-68)	63	63
E (39-54)		
F (21-38)		
G (1-20)		
Not energy efficient - higher running costs		
England, Scotland & Wales		EU Directive 2002/91/EC

Chestertons Tower Bridge Lettings

220 Tower Bridge Road
 Tower Bridge
 London
 SE1 2UP
 towerbridge@chestertons.co.uk
 02073576911
 chestertons.co.uk

Additional tenant charges apply (fees apply to non-AST tenancies only)
 Tenancy Agreement Fee: £300
 References per Tenant/Guarantor: £60
 Inventory check (approx. £100 – £250 inc. VAT)
 chestertons.co.uk/property-to-rent/applicable-fees

Vantage Court,
Old Kent Road, SE1



Approx Gross Internal Area 550 Sq Ft - 51.10 Sq M

For Illustration Purposes Only - Not To Scale
www.goldlens.co.uk
Ref. No. 020877R

