

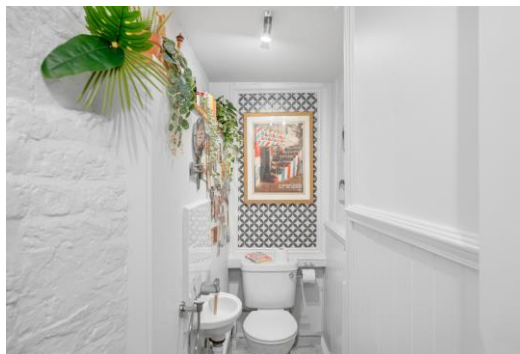


# Dolben Street

London, SE1

£5,000 per month  
(£1,153.85 per week)

An unique two double bedroom house arranged over four floors offered to rent in the heart of SE1 located just moments from London Bridge and Southwark Stations.



# Dolben Street

## London, SE1

- TWO BEDROOM
- HOUSE
- SHORT LET
- BILLS INCLUDED



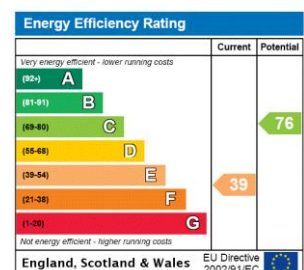


An unique two double bedroom house arranged over four floors offered to rent in the heart of SE1 located just moments from London Bridge and Southwark Stations.

This spacious accommodation comprises three great size double bedrooms with storage, reception room, separate kitchen, main bathroom suite and WC.

Ideally located for access to The City, Westminster and Canary Wharf just moments from the Jubilee line and within a short walk of the Tate Modern and Borough.

**Minimum Term:** 2 months  
**Deposit Required:** £5,769.23  
**Local Authority:** London Borough of Southwark  
**Council Tax Band:** E  
**EPC Rating:** E  
**Furnished**



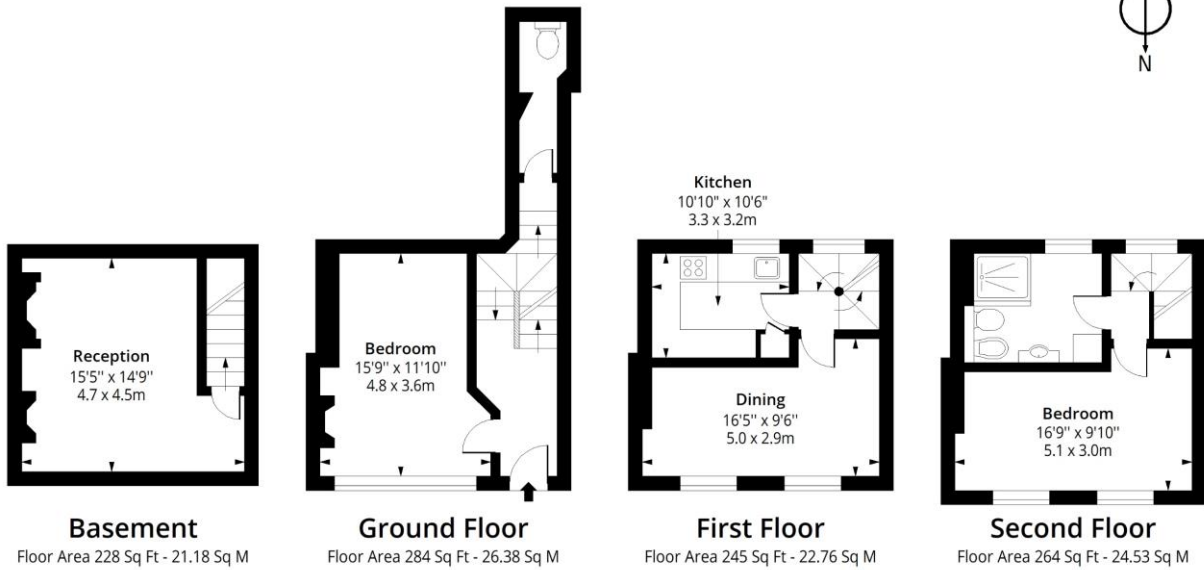
### Chestertons Tower Bridge Lettings

220 Tower Bridge Road  
 Tower Bridge  
 London  
 SE1 2UP  
[towerbridgelettingsusers@chestertons.co.uk](mailto:towerbridgelettingsusers@chestertons.co.uk)  
 02073576911  
[chestertons.co.uk](http://chestertons.co.uk)

Additional tenant charges apply (fees apply to non-AST tenancies only)  
 Tenancy Agreement Fee: £300  
 References per Tenant/Guarantor: £60  
 Inventory check (approx. £100 – £250 inc. VAT)  
[chestertons.co.uk/property-to-rent/applicable-fees](http://chestertons.co.uk/property-to-rent/applicable-fees)

# Dolben Street, SE1

Approx. Gross Internal Area 1021 Sq Ft - 94.85 Sq M



Measured according to RICS IPMS2. Floor plan is for illustrative purposes only and is not to scale. Every attempt has been made to ensure the accuracy of the floor plan shown, however all measurements, fixtures, fittings and data shown are an approximate interpretation for illustrative purposes only. 1 sq m = 10.76 sq feet.

lpaplus.com

Date: 28/3/2025



This paper is  
100% recyclable